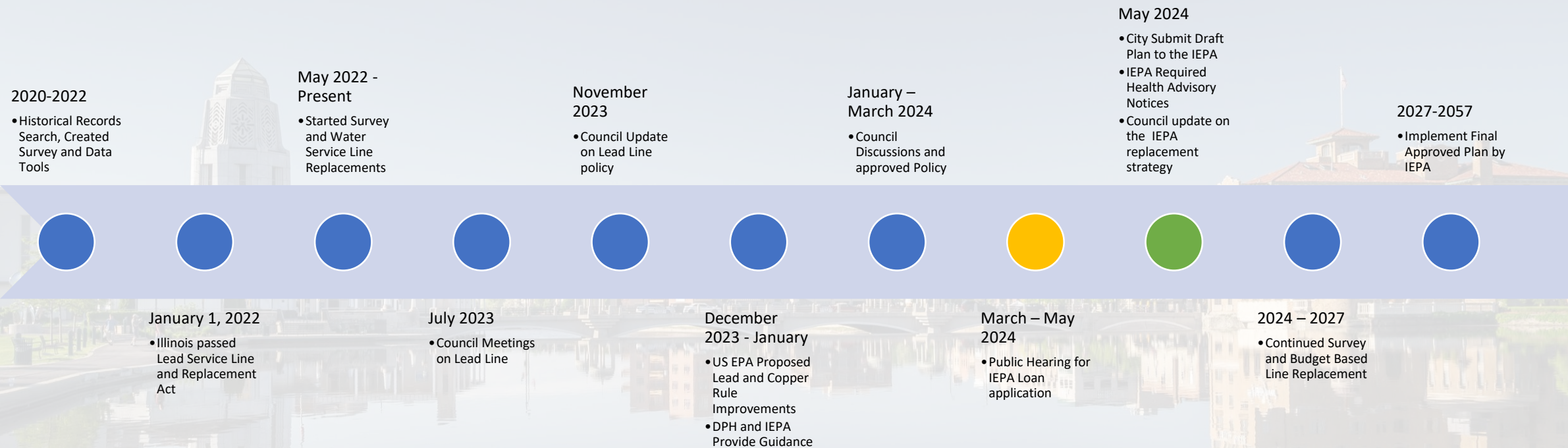


City of St Charles Lead Line Replacement

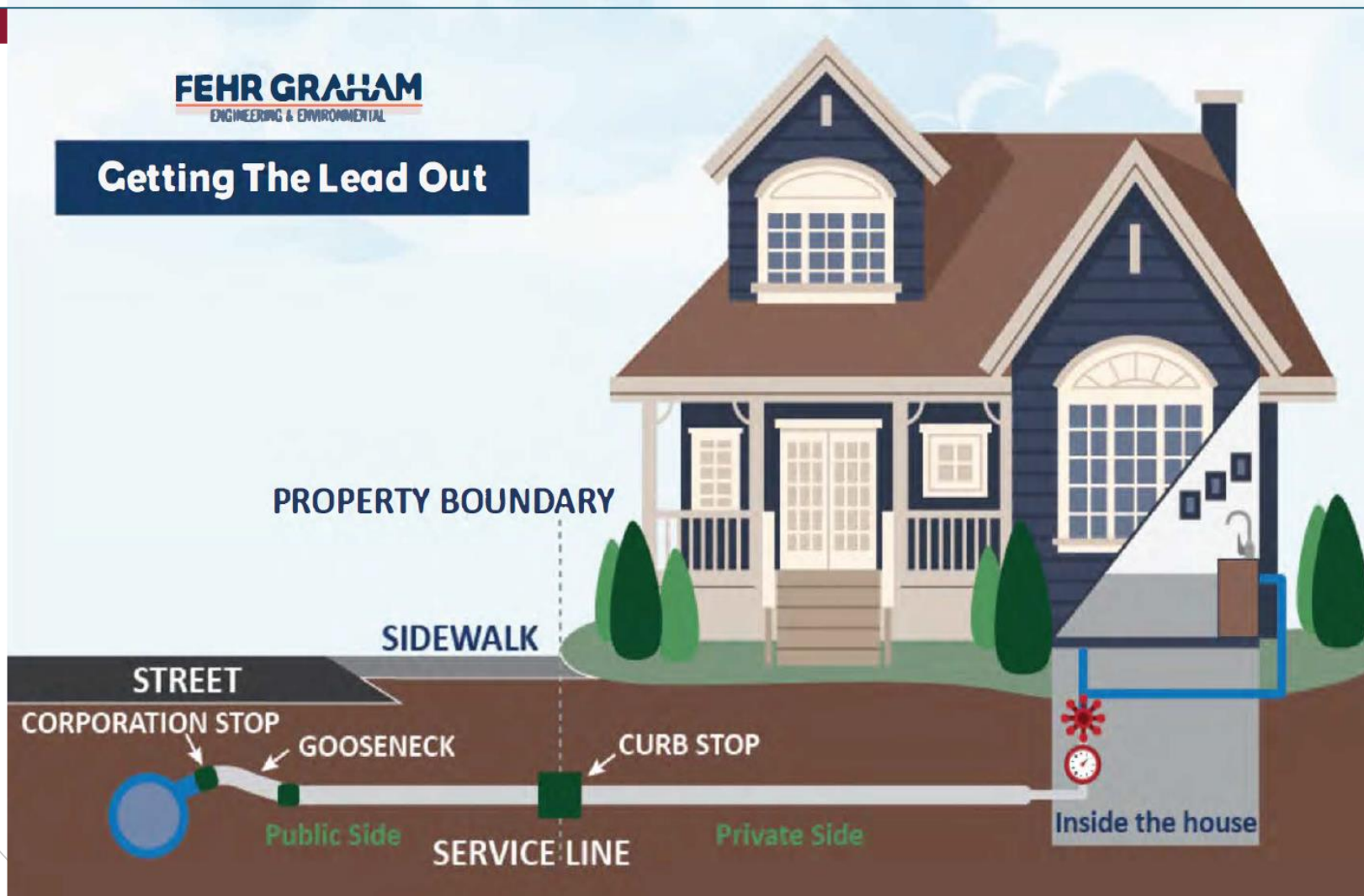


CITY OF
ST. CHARLES
ILLINOIS • 1834

Lead Line Replacement Time Line

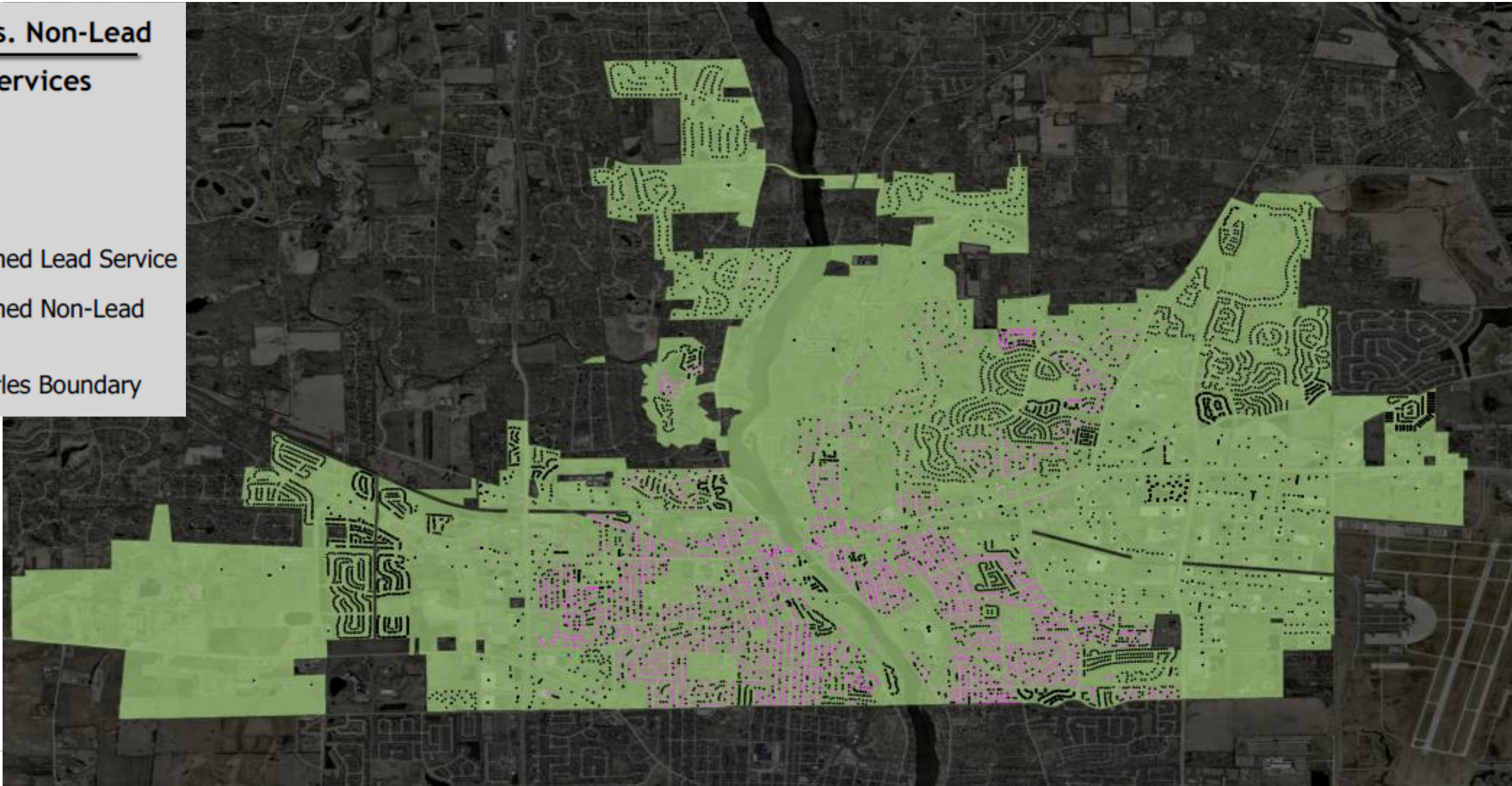


Service Line Recap



Lead vs. Non-Lead Services

- Confirmed Lead Service
- Confirmed Non-Lead Service
- St Charles Boundary



USEPA Proposed Lead and Copper Rule Improvements

- Published December 2023; Expected implantation October 2024

Proposed Law Changes:

- **Modify time table for lead line completion from 30 years to 10 years**
- **Full lead line replacement**
- Lead Line inventory October 2024
- Improved water quality testing
- Lowering the Lead water quality level from 15ug/L to 10ug/L
- Strengthening Public Health Protection and Reducing Exposure



ILEPA Replacement Requirements

Expected IEPA Rule Change Coming this July

- Based off of USEPA guidance

IEPA Priority Replacement Program

High – Risk Facilities (FY 24 –25 & FY 25 - 26)

- Preschools
- Parks
- Playgrounds
- Hospitals
- Clinics
- Licensed Daycares

Census Metric Tracts (FY 26 – 27 until completion)

- Median House Income
- Children under age 6
- Poverty Rate
- Unemployment Rate
- Social Security Rate
- Minority and Limited English – Speaking Household
- Supplemental Security Income
- Houses Built Pre 1990

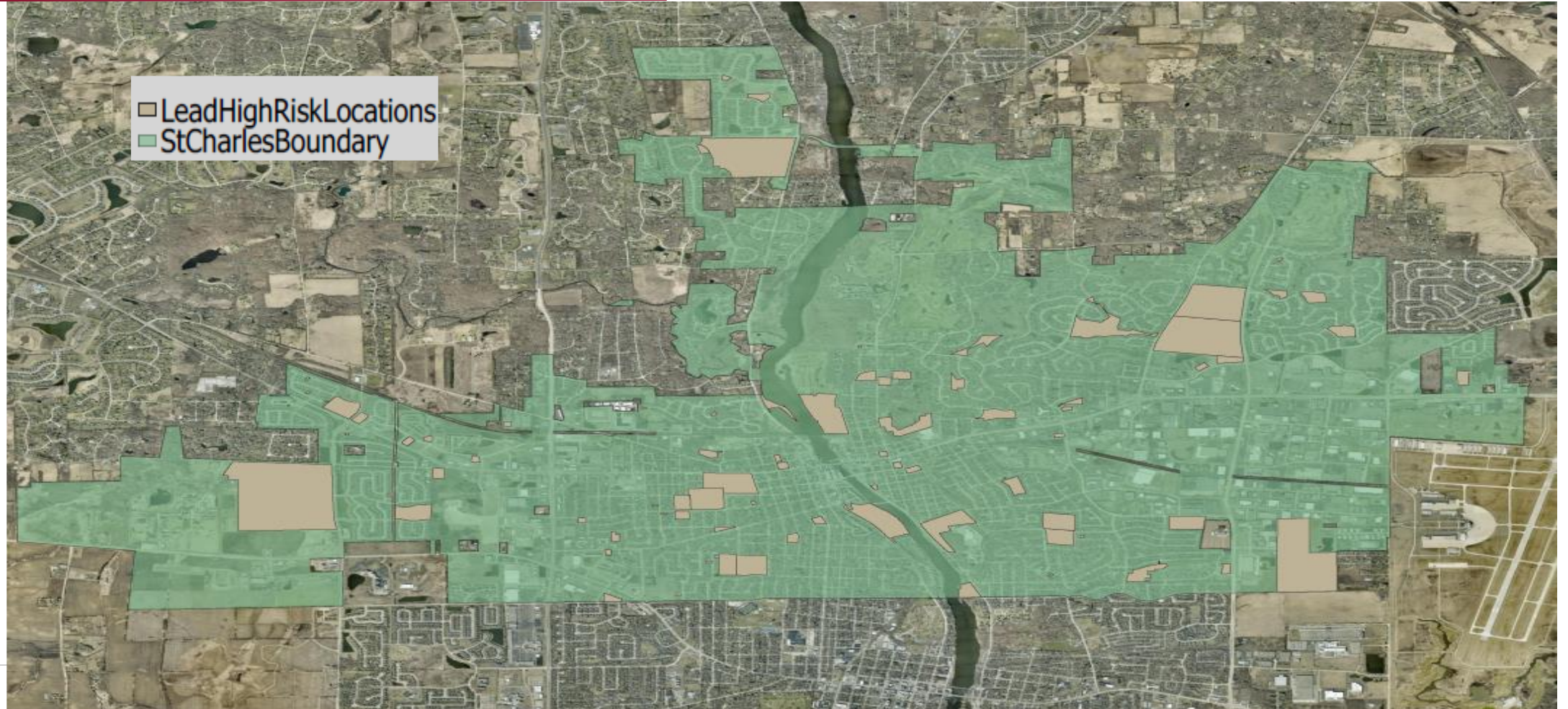


St Charles Lead Line Replacement Strategy

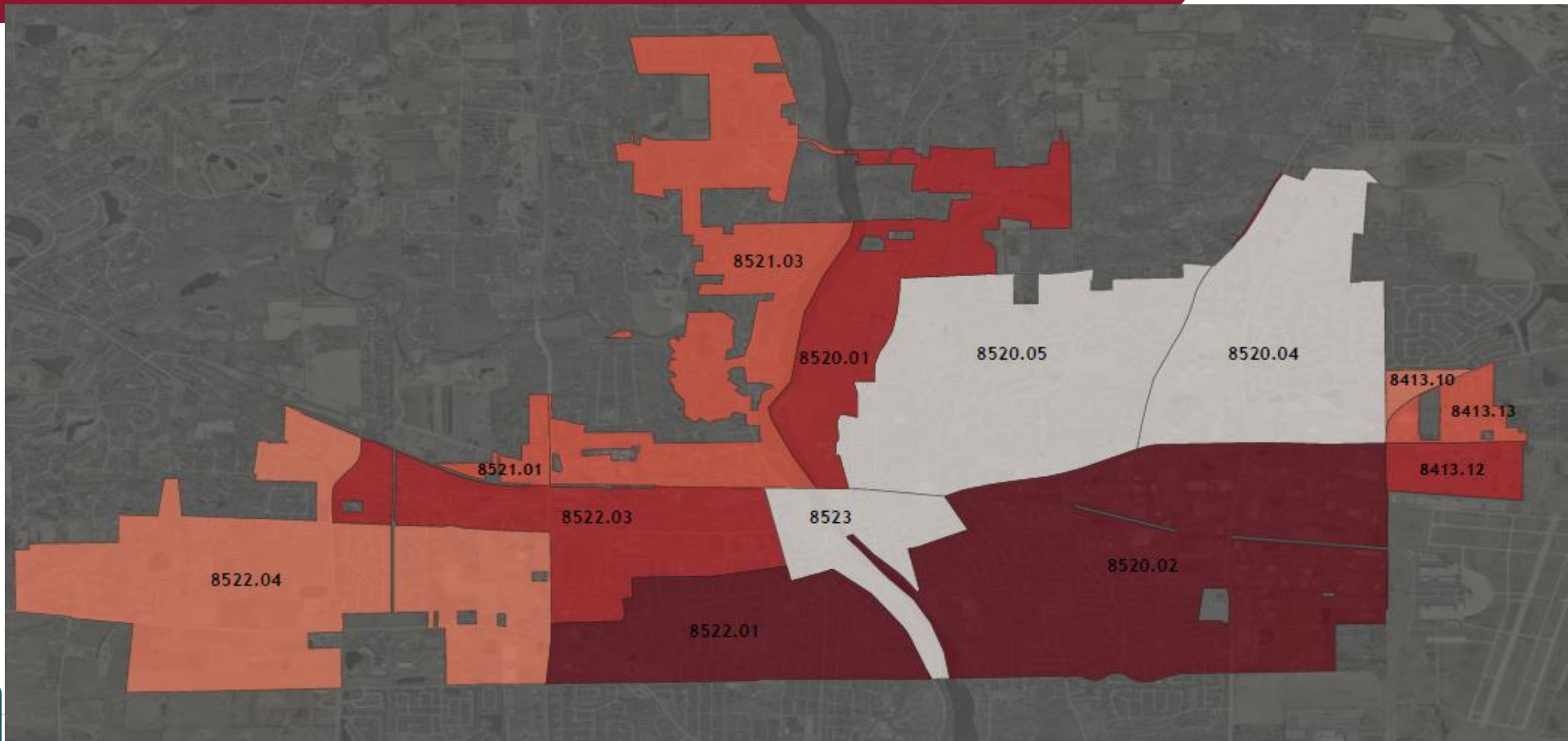
- **Emergency leaks or damage water service**
- **Infrastructure replacement project**
 - Water Main Replacement
 - Sewer Main Replacement
 - Road Projects
 - MFT
 - Other Project Impact Water Services
- **IEPA Priority Replacement Program**
 - High – Risk Facilities
 - Census Metric Tracts



High Risk Facilities



Census Tracts



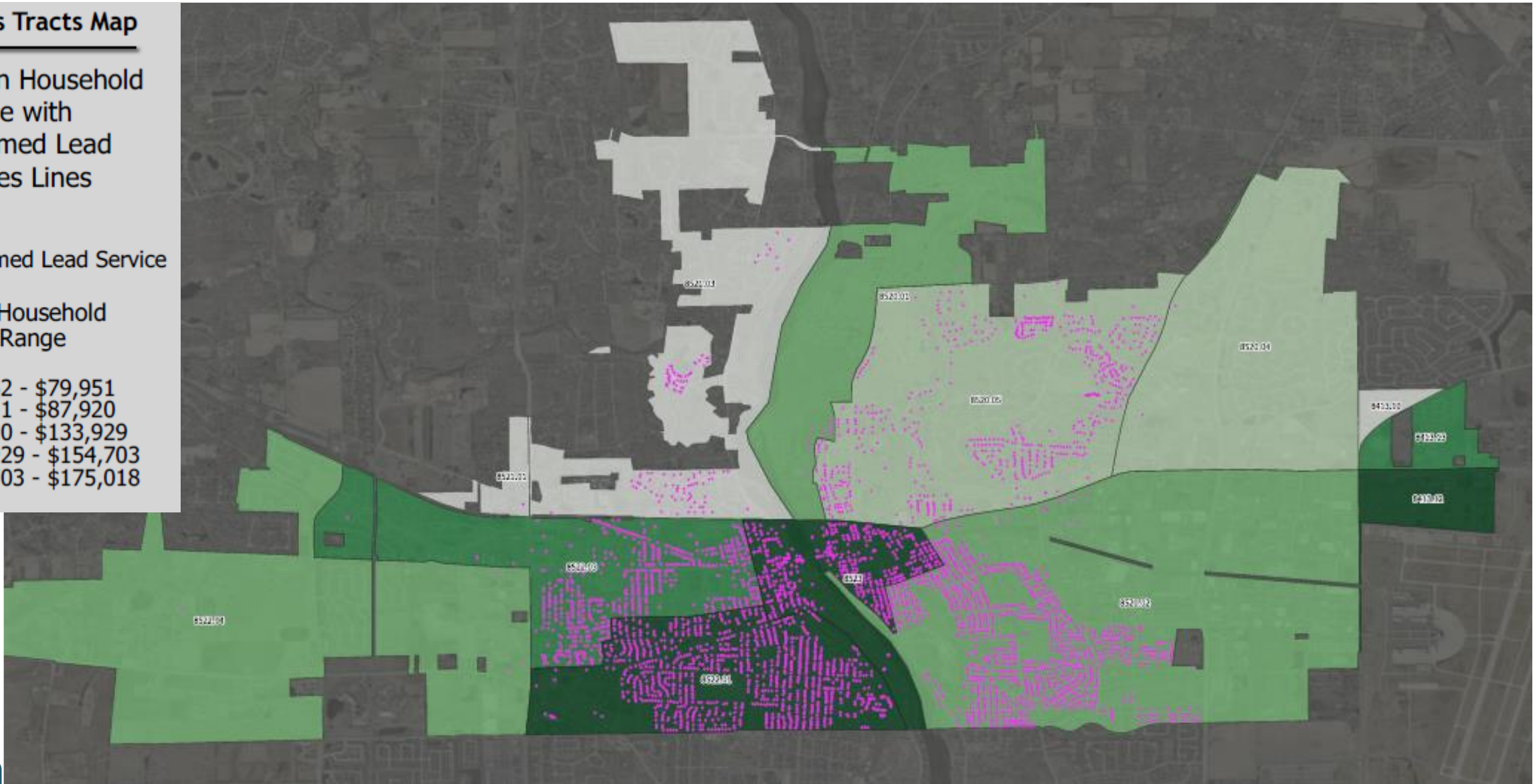
Census Tracts Map

Median Household
Income with
Confirmed Lead
Services Lines

● Confirmed Lead Service

Median Household
Income Range

- \$59,962 - \$79,951
- \$79,951 - \$87,920
- \$87,920 - \$133,929
- \$133,929 - \$154,703
- \$154,703 - \$175,018



CITY OF
ST. CHARLES
ILLINOIS • 1834

Census Tracts Map

Children under 6 years old with Confirmed Lead Services

● Confirmed Lead Service

Children under 6 years old

- 2 % - 4%
- 4 % - 5%
- 5% - 7%
- 7% - 11%



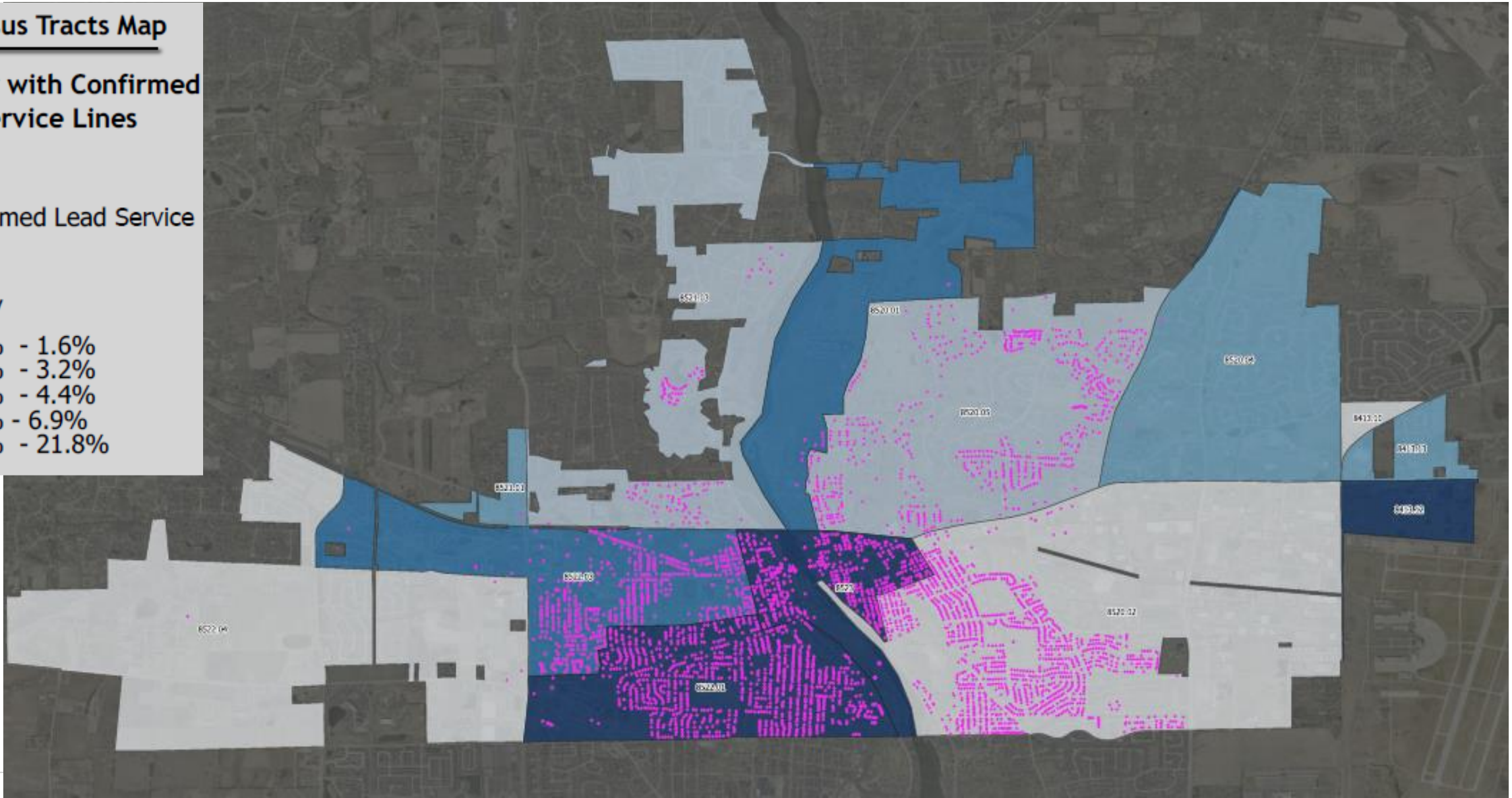
Census Tracts Map

Poverty with Confirmed Lead Service Lines

● Confirmed Lead Service

Poverty

- 0.5% - 1.6%
- 1.6% - 3.2%
- 3.2% - 4.4%
- 4.4% - 6.9%
- 6.9% - 21.8%



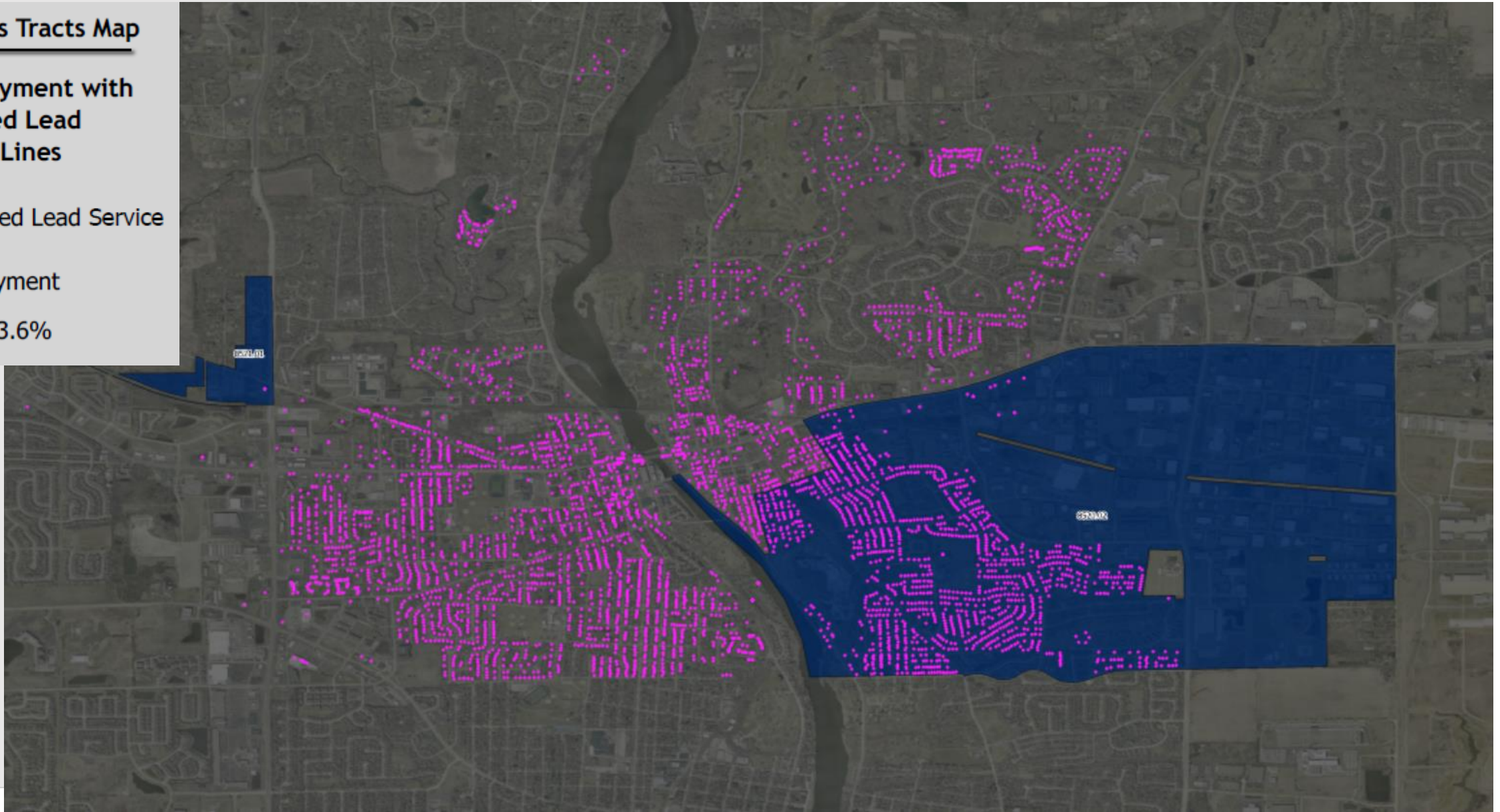
Census Tracts Map

Unemployment with Confirmed Lead Services Lines

● Confirmed Lead Service

Unemployment

■ 0% - 3.6%



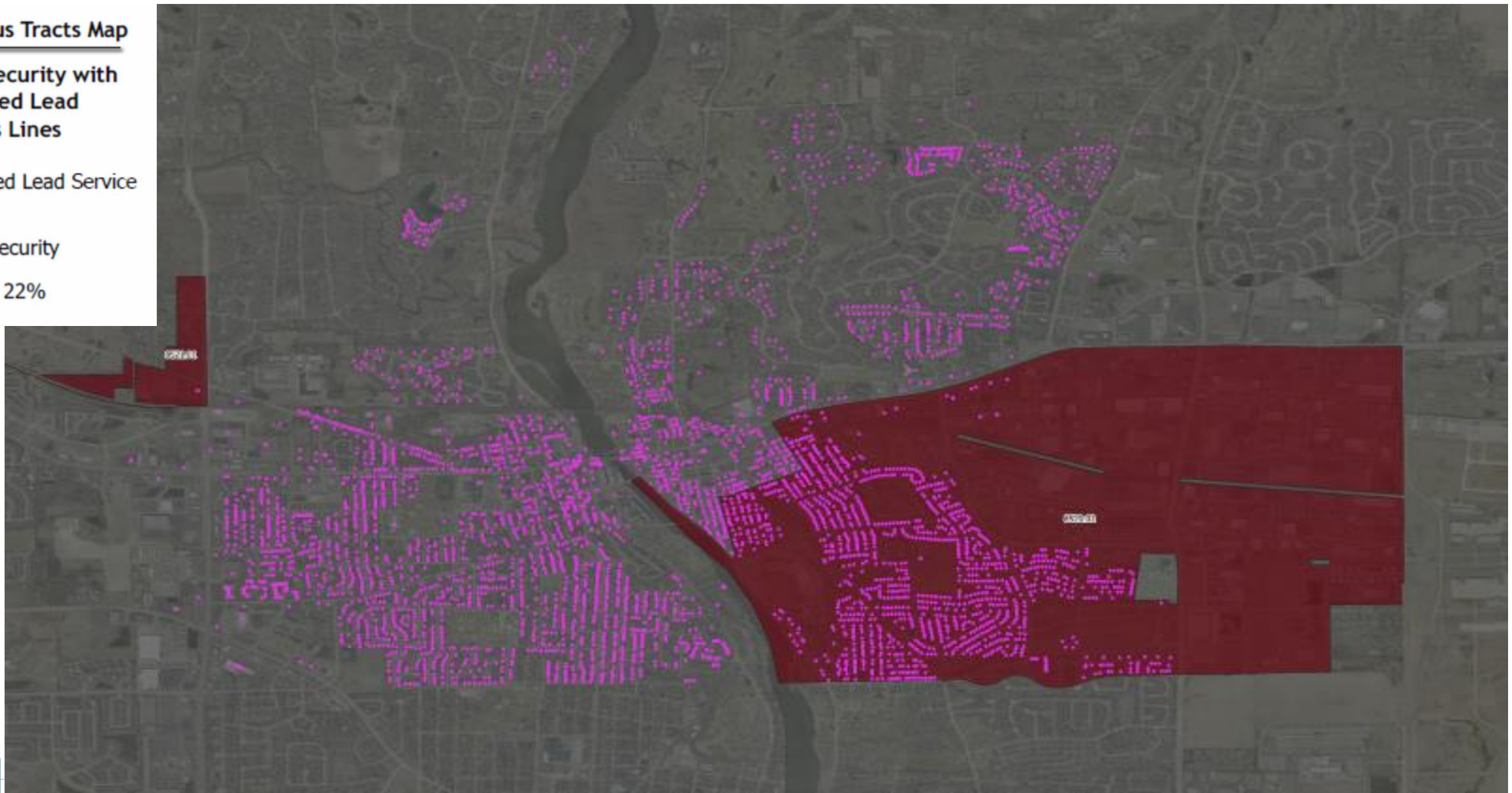
Census Tracts Map

Social Security with Confirmed Lead Services Lines

• Confirmed Lead Service

Social Security

■ 0% - 22%



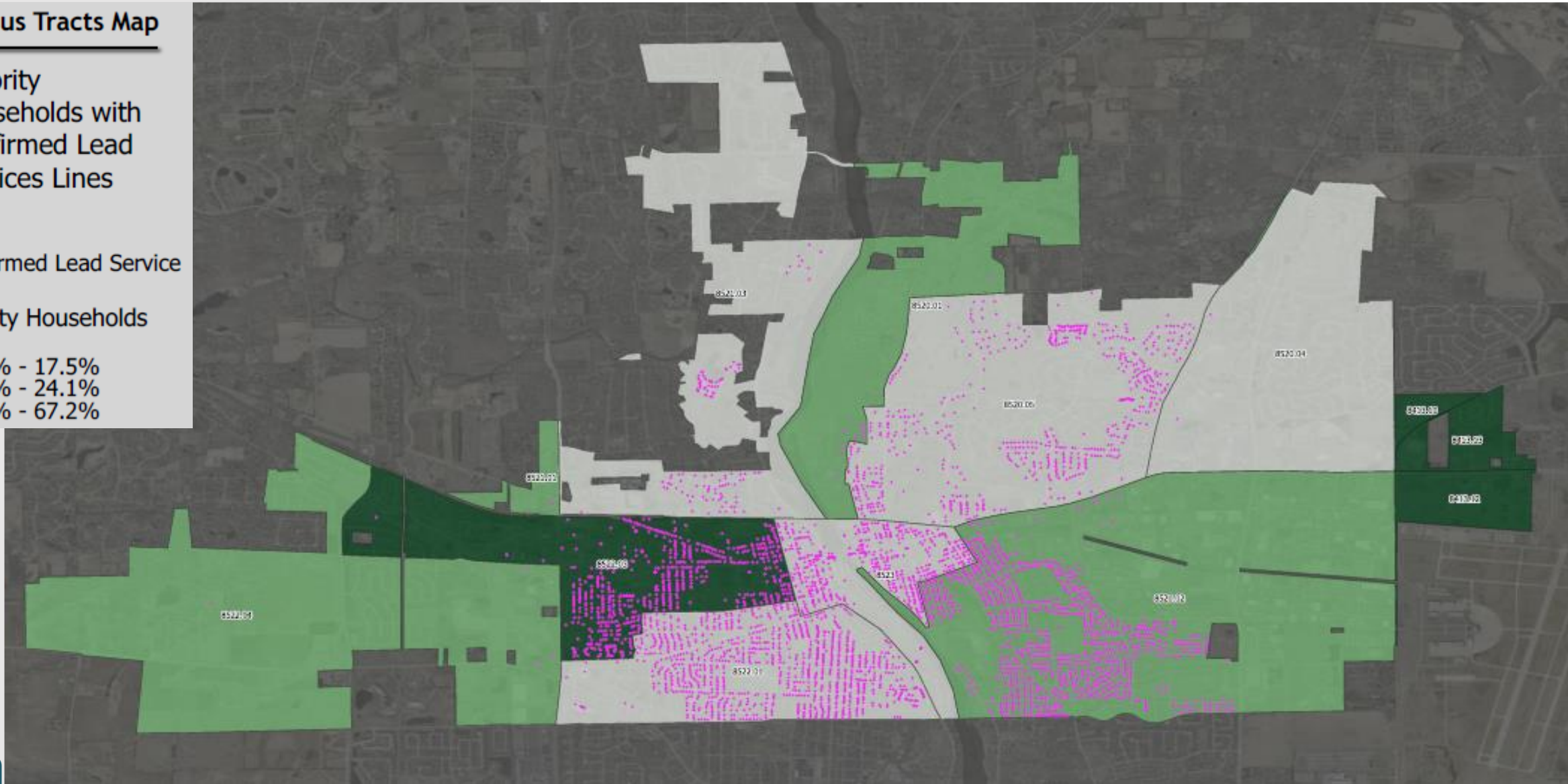
Census Tracts Map

Minority
Households with
Confirmed Lead
Services Lines

● Confirmed Lead Service

Minority Households

- 10.6% - 17.5%
- 17.5% - 24.1%
- 24.1% - 67.2%



CITY OF
ST. CHARLES
ILLINOIS • 1834

Census Tracts Map

Limited English
Households with
Confirmed Lead
Services Lines

● Confirmed Lead Service

Limited English
Household

□ 0% - 0.44%

■ 0.44% - 12.75%



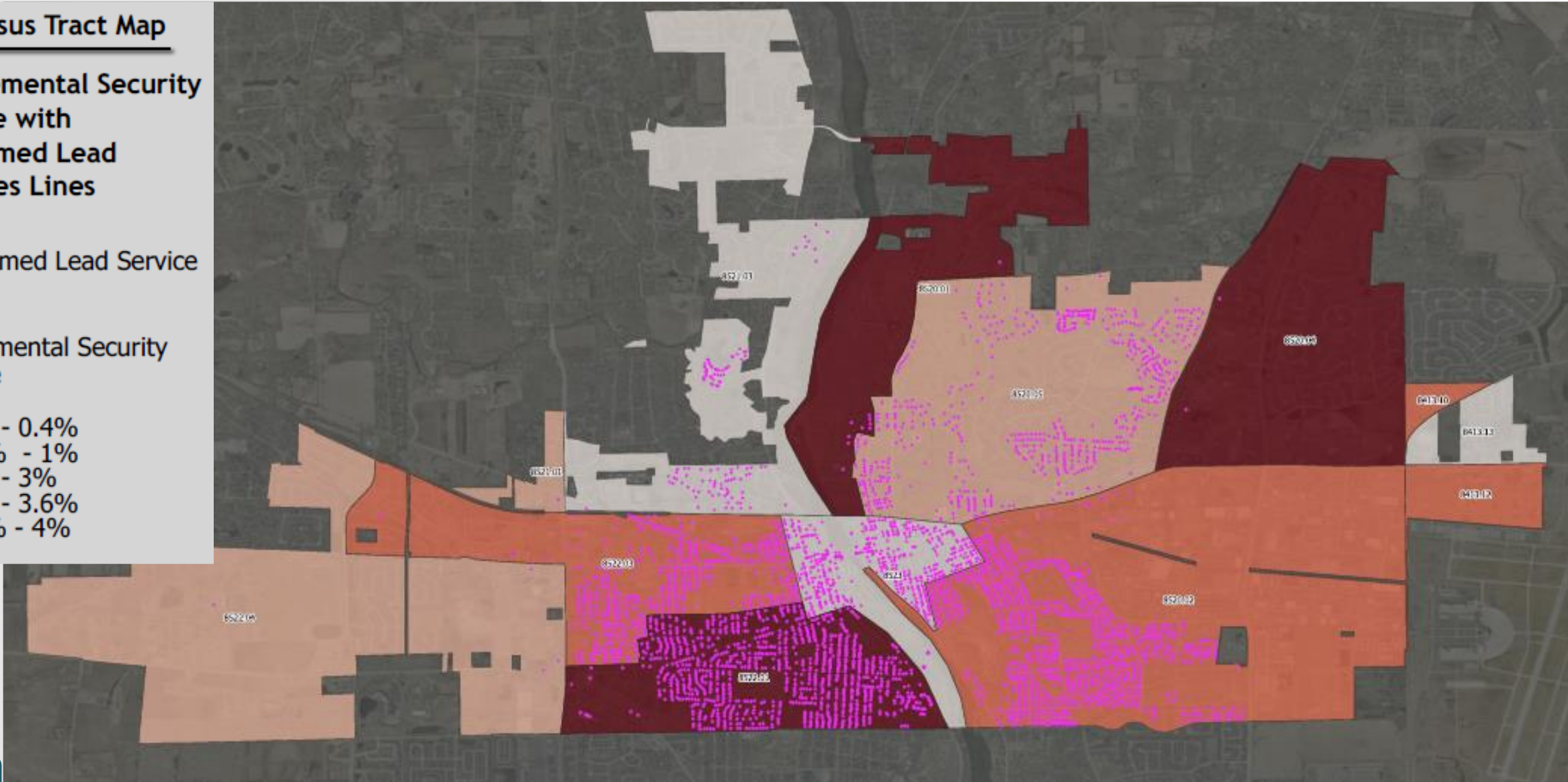
Census Tract Map

Supplemental Security Income with Confirmed Lead Services Lines

● Confirmed Lead Service

Supplemental Security Income

- 0% - 0.4%
- 0.4% - 1%
- 1% - 3%
- 3% - 3.6%
- 3.6% - 4%



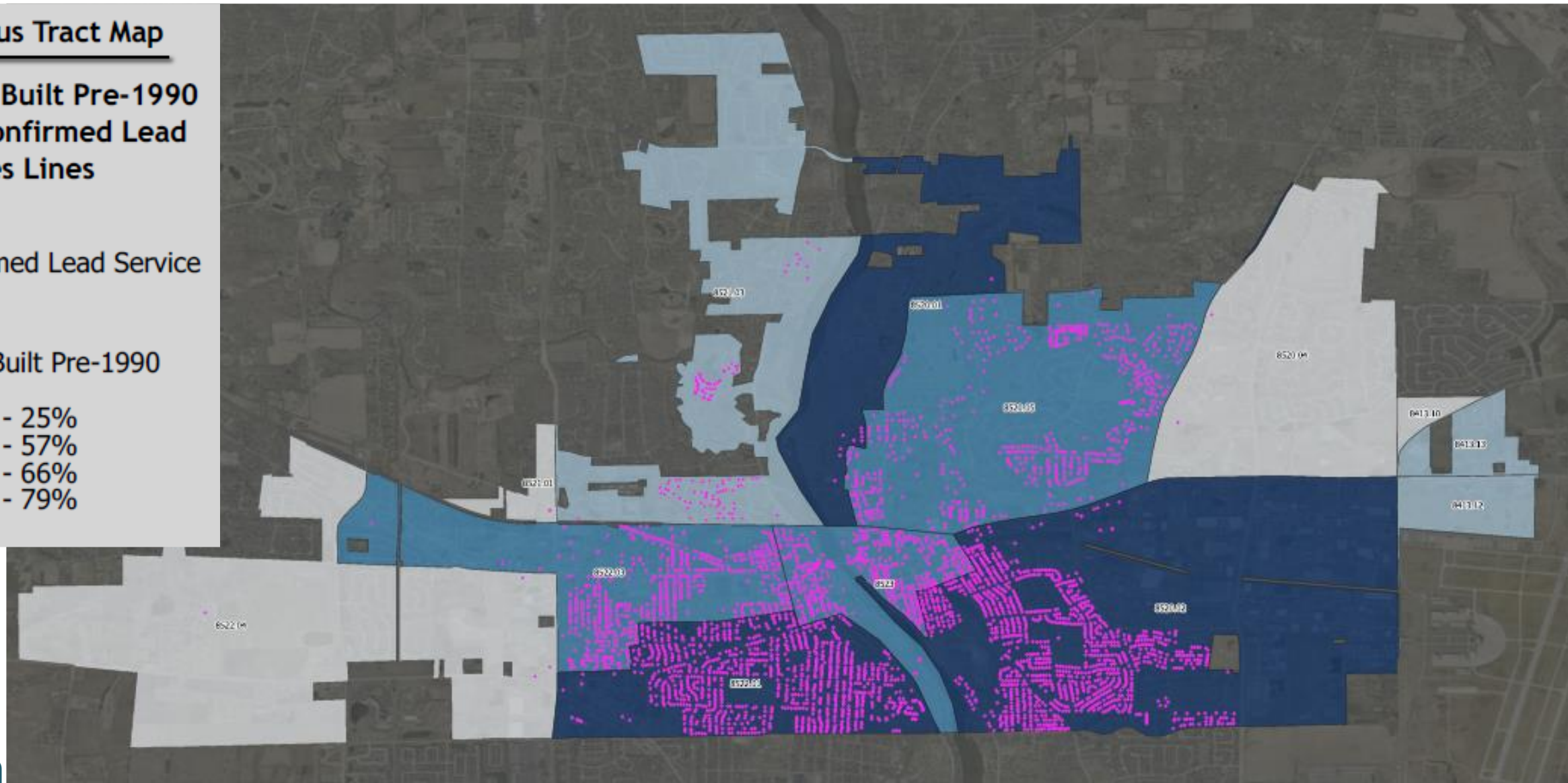
Census Tract Map

Homes Built Pre-1990 with Confirmed Lead Services Lines

● Confirmed Lead Service

Homes Built Pre-1990

- 12% - 25%
- 25% - 57%
- 57% - 66%
- 66% - 79%



CITY OF ST. CHARLES CENSUS METRICS

Geographic Area Name	Median Household Income	Score	Children Under 6 Years Old	Score	Poverty %	Score	Unemployment %	Score	Social Security %	Score	LSLR %	Score	Supplemental Security Income %	Score	Built Pre-1990	Score	Total Score	Confirmed Lead Service Lines
Census Tract 8520.02, Kane County, Illinois	\$ 97,192.00	0	7%	80	1.1%	0	1.30%	15	22%	35	<1%	0	2.1%	20	73%	45	195	1317
Census Tract 8522.01, Kane County, Illinois	\$ 79,228.00	0	5%	70	8.1%	30	N/A	0	N/A	0	0%	0	4.4%	45	79%	45	190	1142
Census Tract 8413.12, DuPage County, Illinois	\$ 64,167.00	0	9%	80	21.8%	45	N/A	0	N/A	0	0%	0	2.5%	25	52%	35	185	0
Census Tract 8520.01, Kane County, Illinois	\$ 88,980.00	0	6%	80	6.6%	25	N/A	0	N/A	0	0%	0	3.5%	35	71%	45	185	10
Census Tract 8522.03, Kane County, Illinois	\$ 81,035.00	0	9%	80	4.9%	20	N/A	0	N/A	0	<1%	0	3.1%	30	66%	45	175	732
Census Tract 8521.01, Kane County, Illinois	\$ 175,018.00	0	4%	50	4.3%	15	3.60%	40	21%	35	0%	0	1.3%	10	20%	10	160	0
Census Tract 8413.13, DuPage County, Illinois	\$ 83,679.00	0	6%	80	3.3%	10	N/A	0	N/A	0	0%	0	0.2%	0	57%	35	125	0
Census Tract 8521.03, Kane County, Illinois	\$ 162,647.00	0	7%	80	2.2%	5	N/A	0	N/A	0	0%	0	0.4%	0	57%	35	120	240
Census Tract 8522.04, Kane County, Illinois	\$ 133,309.00	0	7%	80	1.3%	5	N/A	0	N/A	0	0%	0	1.1%	10	25%	15	110	4
Census Tract 8413.10, DuPage County, Illinois	\$ 174,766.00	0	5%	70	0.5%	0	N/A	0	N/A	0	0%	0	3.0%	30	12%	5	105	0
Census Tract 8523, Kane County, Illinois	\$ 599,962.00	0	3%	30	7.1%	30	N/A	0	N/A	0	<1%	0	0.0%	0	64%	40	100	615
Census Tract 8520.04, Kane County, Illinois	\$ 142,788.00	0	2%	20	3.4%	10	N/A	0	N/A	0	0%	0	3.9%	40	15%	5	75	2
Census Tract 8520.05, Kane County, Illinois	\$ 136,411.00	0	2%	20	2.8%	10	N/A	0	N/A	0	0%	0	0.6%	5	60%	40	75	664



Census Tracts Heat Map

● Confirmed Lead Service Line

Census Tracts Heat Map

- 75 - 102 (Priority 5)
- 102 - 118 (Priority 4)
- 118 - 163 (Priority 3)
- 163 - 185 (Priority 2)
- 185 - 195 (Priority 1)



CITY OF
ST. CHARLES
 ILLINOIS • 1834

Action Items

- Full service line replacement policy for FY2024 - 2025
 - FY 24 – 25 - \$ 100,000
 - FY 25 – 26 - \$ 300,000
 - FY 26 – 27 - \$3,500,000
- Staff will continue to apply for state funding options and monitor proposed laws and policy's
- Staff will continue to work on surveying and replacement plans for area's that include:
 - Emergency Leaks on the Service Lines
 - Capital replacement projects
 - IEPA High Priority Locations
 - IEPA Census base replacements
- Additional Information
www.stcharlesil.gov



City of St. Charles Lead Service Line Replacement Comprehensive Plan

St. Charles, Illinois
Water System ID Number IL0894830

April 2024

Prepared by:
FEHR GRAHAM
ENGINEERING & ENVIRONMENTAL
200 Prairie Street
Suite 208
Rockford, Illinois 61107

FEHR GRAHAM
ENGINEERING & ENVIRONMENTAL



CITY OF
ST. CHARLES
ILLINOIS • 1834



CITY OF
ST. CHARLES
ILLINOIS • 1834