

PROJECT MAP
(NOT TO SCALE)

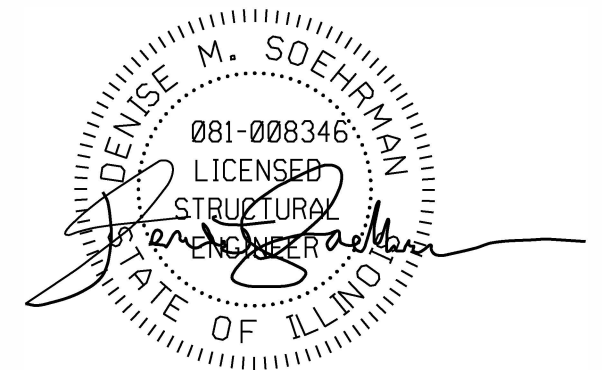
SN 045-6855
Latitude: 41.90914443
Longitude: -88.31058323

CITY OF ST. CHARLES PUBLIC WORKS DEPARTMENT

CONTRACT PLANS FOR

PRAIRIE STREET OVER FOX RIVER BRIDGE REPAIRS 2023

FEDERAL-AID URBAN (FAU) ROUTE NO.: 1648
STRUCTURE NO.: 045-6855



EXPIRATION DATE 11-30-2024
DATE: 5-1-2023
SHEETS: 1-11



EXPIRATION DATE 11-30-2023
DATE: 05-1-2023
SHEETS: 12-22

GENERAL NOTES

- All materials and construction methods shall conform to the "Standard Specifications for Road and Bridge Construction" adopted January 1, 2022 by the Illinois Department of Transportation, including Supplemental Specifications and Recurring Special Provisions of the current year, unless otherwise specified.
- These contract documents have been prepared based on field inspection, existing plans, and other information available at the time. Actual field conditions may require modifications to construction details and work quantities. It shall be the Contractor's responsibility to verify the plan dimensions, details, and existing conditions in the field and make necessary (approved by City of St. Charles) adjustments prior to construction or ordering of materials. Such variations shall not be cause for additional compensation or a change in the scope of work. However, the Contractor will be paid for the quantity actually furnished at the unit price bid for the work. Any conditions found by the Contractor that were not anticipated on the Contract Plans and that will affect the cost of implementation of the reconstruction specified shall be immediately brought to the attention of the City of St. Charles. Pre-bid/pre-proposal visits and access to the site may be required and can be arranged through the City of St. Charles.
- Plans shall not be scaled for construction dimensions.
- The Contractor shall make his own investigation to determine the existence, nature, and exact location of all utility lines and appurtenances within the limits of the rehabilitation.
- The Contractor's means and methods shall not include work within the Fox River.
- The Contractor shall exercise caution during all construction operations to prevent any damage to adjacent structures, buildings, bridge components, and finishes not within the scope of this project. Structures, buildings, bridge components, and finishes not within the scope of the reconstruction and improvements that are damaged during the reconstruction operations shall be repaired or replaced at the expense of the Contractor to the satisfaction of the City of St. Charles.
- All debris resulting from the removal of the existing structure or created while performing the specified work shall be removed from the project site and disposed of per Article 202.03 of the Standard Specifications.
- No additional construction loading shall be placed on the bridge during construction without the permission of the City of St. Charles.
- The Contractor shall coordinate all permitting and construction activities with the City of St. Charles, as required.
- The Contractor is to install inlet protection for all open grate drainage structures within the construction zone.

SUMMARY OF QUANTITIES

ITEM	UNIT	TOTAL
INLET FILTERS	EACH	22
PROTECTIVE COAT	SQ YD	3246
EPOXY CRACK INJECTION	FOOT	132
MOBILIZATION	L SUM	1
* CLEANING AND PAINTING EXPOSED REBAR	SQ FT	21
* TRAFFIC CONTROL AND PROTECTION. (SPECIAL)	L SUM	1
GBSP STRUCTURAL REPAIR OF CONCRETE (DEPTH EQUAL TO OR LESS THAN 5 INCHES)	SQ FT	42
** GBSP STRUCTURAL REPAIR OF CONCRETE (DEPTH GREATER THAN 5 INCHES)	SQ FT	5
GBSP DECK SLAB REPAIR (PARTIAL)	SQ YD	15
* CLEANING BRIDGE SCUPPERS AND EXPANSION JOINTS	L SUM	1
* PEDESTRIAN RAILING REMOVAL AND RE-INSTALLATION	FOOT	92
* SIDEWALK INLAY	SQ YD	244
* ITEMS AS ORDERED BY ENGINEER	UNITS	25000
CHANGEABLE MESSAGE SIGN	DAYS	45

* Indicates Special Provision
 ** Quantity includes a contingency (above the amounts shown in the bill of material) to account for uncertainties associated with the condition of the existing structure.

GBSP Indicates IDOT Guide Bridge Special Provision

INDEX OF SHEETS

- GEN-1 TITLE SHEET
- GEN-2 GENERAL NOTES, INDEX OF SHEETS & SUMMARY OF QUANTITIES
 - S-1 GENERAL PLAN AND ELEVATION
 - S-2 DECK AND LIGHT POLE BASE REPAIR DETAILS
 - S-3 LIGHT POLE BASE AND CORBEL REPAIR DETAILS (1 OF 3)
 - S-4 LIGHT POLE BASE AND CORBEL REPAIR DETAILS (2 OF 3)
 - S-5 LIGHT POLE BASE AND CORBEL REPAIR DETAILS (3 OF 3)
 - S-6 PEDESTRIAN RAILING DETAILS
 - S-7 SIDEWALK REPAIR DETAILS
 - S-8 PROTECTIVE COAT DETAILS
 - S-9 DIAPHRAGM END REPAIR DETAILS
- MOT-1 MAINTENANCE OF TRAFFIC GENERAL NOTES & CONSTRUCTION STAGING
- MOT-2 MAINTENANCE OF TRAFFIC PRAIRIE ST DETOUR ROUTE
- MOT-3 MAINTENANCE OF TRAFFIC IDOT STANDARD 701001
- MOT-4 MAINTENANCE OF TRAFFIC IDOT STANDARD 701006
- MOT-5 MAINTENANCE OF TRAFFIC IDOT STANDARD 701606
- MOT-6 MAINTENANCE OF TRAFFIC IDOT STANDARD 701701
- MOT-7 MAINTENANCE OF TRAFFIC IDOT STANDARD 701801 (1 OF 2)
- MOT-8 MAINTENANCE OF TRAFFIC IDOT STANDARD 701801 (2 OF 2)
- MOT-9 MAINTENANCE OF TRAFFIC IDOT STANDARD 701901 (1 OF 3)
- MOT-10 MAINTENANCE OF TRAFFIC IDOT STANDARD 701901 (2 OF 3)
- MOT-11 MAINTENANCE OF TRAFFIC IDOT STANDARD 701901 (3 OF 3)



FILE NAME =	USER NAME = rcook	DESIGNED - RPC	REVISED -
Gen_Notes.dgn		CHECKED - SLV	REVISED -
	PLOT SCALE =	DRAWN - RPC	REVISED -
	PLOT DATE = 5/15/2023	CHECKED - SLV	REVISED -

CITY OF ST. CHARLES, ILLINOIS

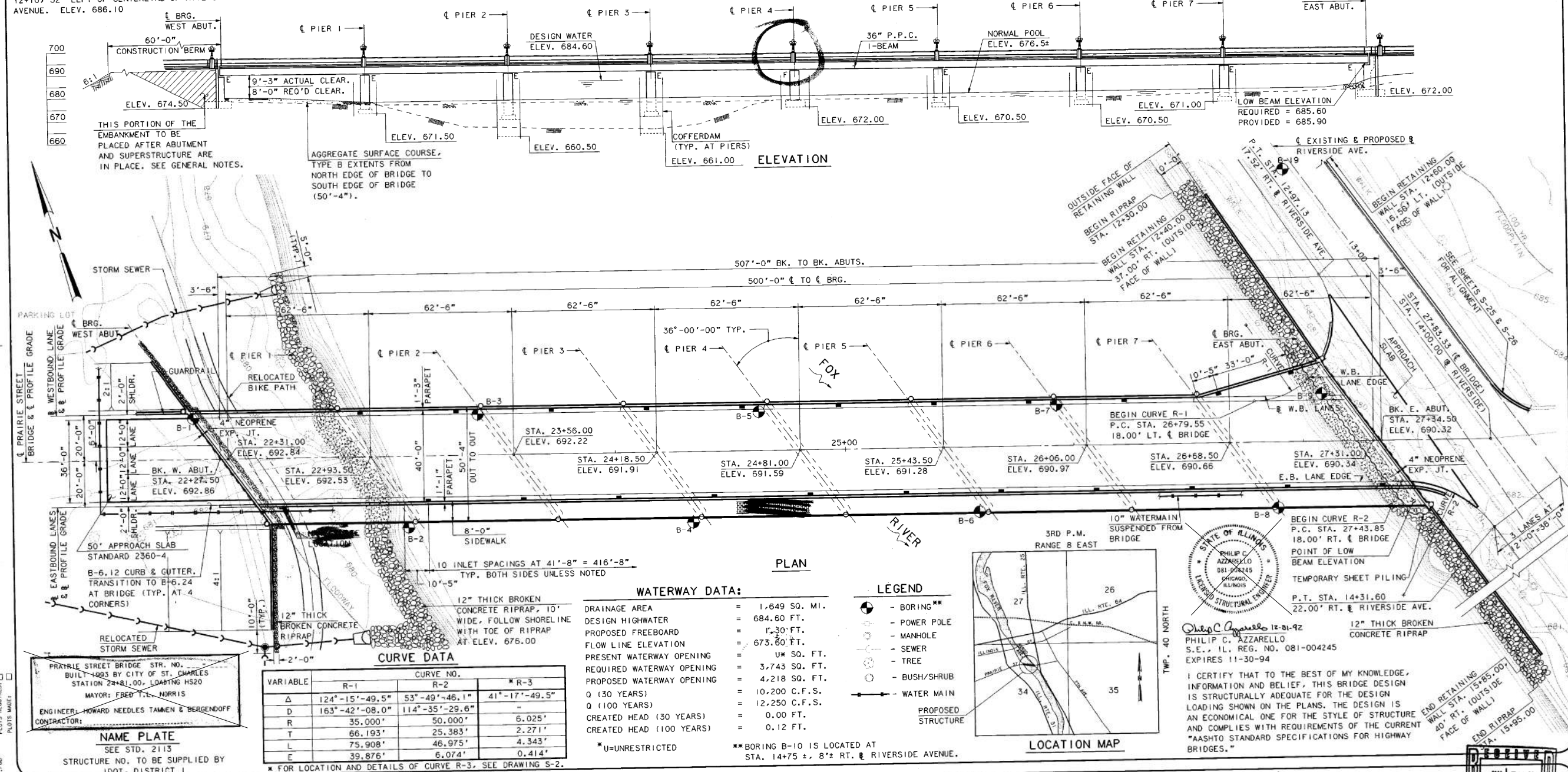
**GENERAL NOTES, INDEX OF SHEETS & SUMMARY OF QUANTITIES
 STRUCTURE NO. 045-6855**

F. A. U. R. T. E.	SECTION	COUNTY	TOTAL SHEETS	SHEET NO.
1648		KANE	22	2
CONTRACT NO.				
SHEET GEN-2 OF GEN-2				
ILLINOIS				

SCOPE OF WORK - 2023 REPAIRS

1. Perform partial depth deck repairs.
2. Remove and replace sidewalk concrete inlays.
3. Repair light pole bases and corbels via structural repair of concrete and epoxy crack injection.
4. Apply protective coat to roadway, parapet, light pole bases, corbels, and sidewalk.
5. Remove debris from drainage scuppers and expansion joints.
6. Chip loose concrete and apply corrosion resistant inhibitor to exposed steel ends of concrete diaphragms.

BENCHMARKS:
 SQUARE CUT ON CURB 30.5' WEST OF THE CENTERLINE OF ILLINOIS ROUTE 31 AND 47' NORTH OF THE CENTERLINE OF PRAIRIE STREET. ELEV. 709.45
 SQUARE CUT ON 10" RETAINING WALL AT STATION 12+10.32' LEFT OF CENTERLINE OF RIVERSIDE AVENUE. ELEV. 686.10



NAME PLATE
 SEE STD. 2113
 STRUCTURE NO. TO BE SUPPLIED BY IDOT, DISTRICT 1

CURVE DATA

VARIABLE	R-1	R-2	*R-3
Δ	124°-15'-49.5"	53°-49'-46.1"	41°-17'-49.5"
D	163°-42'-08.0"	114°-35'-29.6"	-
R	35.000'	50.000'	6.025'
T	66.193'	25.383'	2.271'
L	75.908'	46.975'	4.343'
E	39.876'	6.074'	0.414'

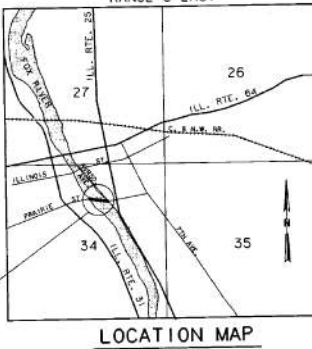
* FOR LOCATION AND DETAILS OF CURVE R-3, SEE DRAWING S-2.

WATERWAY DATA:

DRAINAGE AREA	= 1,649 SQ. MI.
DESIGN HIGH WATER	= 684.60 FT.
PROPOSED FREEBOARD	= 1.30 FT.
FLOW LINE ELEVATION	= 673.60 FT.
PRESENT WATERWAY OPENING	= U* SQ. FT.
REQUIRED WATERWAY OPENING	= 3,743 SQ. FT.
PROPOSED WATERWAY OPENING	= 4,218 SQ. FT.
Q (30 YEARS)	= 10,200 C.F.S.
Q (100 YEARS)	= 12,250 C.F.S.
CREATED HEAD (30 YEARS)	= 0.00 FT.
CREATED HEAD (100 YEARS)	= 0.12 FT.

* U=UNRESTRICTED ** BORING B-10 IS LOCATED AT STA. 14+75 ±, 8'± RT. & RIVERSIDE AVENUE.

- LEGEND**
- BORING**
 - POWER POLE
 - MANHOLE
 - SEWER
 - TREE
 - BUSH/SHRUB
 - WATER MAIN
 - PROPOSED STRUCTURE



STATE OF ILLINOIS
 PHILIP C. AZZARELLO
 S.E., IL. REG. NO. 081-004245
 CHICAGO, ILLINOIS
 EXPIRES 11-30-94

I CERTIFY THAT TO THE BEST OF MY KNOWLEDGE, INFORMATION AND BELIEF, THIS BRIDGE DESIGN IS STRUCTURALLY ADEQUATE FOR THE DESIGN LOADING SHOWN ON THE PLANS. THE DESIGN IS AN ECONOMICAL ONE FOR THE STYLE OF STRUCTURE AND COMPLIES WITH REQUIREMENTS OF THE CURRENT "AASHTO STANDARD SPECIFICATIONS FOR HIGHWAY BRIDGES."

In Charge: HNTB
 Designed By: PCA
 Drawn By: JRB/GJH
 Checked By: KGN
 Approved By: PCA

HNTB HOWARD NEEDLES TAMMEN & BERGENDOFF ARCHITECTS ENGINEERS PLANNERS

RHAMA R.H. ANDERSON & ASSOCIATES, INC.

CITY OF ST. CHARLES
 PRAIRIE STREET BRIDGE

CITY OF ST. CHARLES
 2 EAST MAIN STREET
 ST. CHARLES, ILLINOIS 60174

GENERAL PLAN AND ELEVATION
 Scale: _____ Date: 12-21-92

benesch
 1230 East Diehl Drive, Suite 109
 Naperville, Illinois 60563
 630-577-9100 Job No. 10333.11

FILE NAME =	USER NAME = rcook	DESIGNED - RPC	REVISED -
General Plan & Elev.dgn	PLOT SCALE =	CHECKED - SLV	REVISED -
	PLOT DATE = 5/15/2023	DRAWN - RPC	REVISED -
		CHECKED - SLV	REVISED -

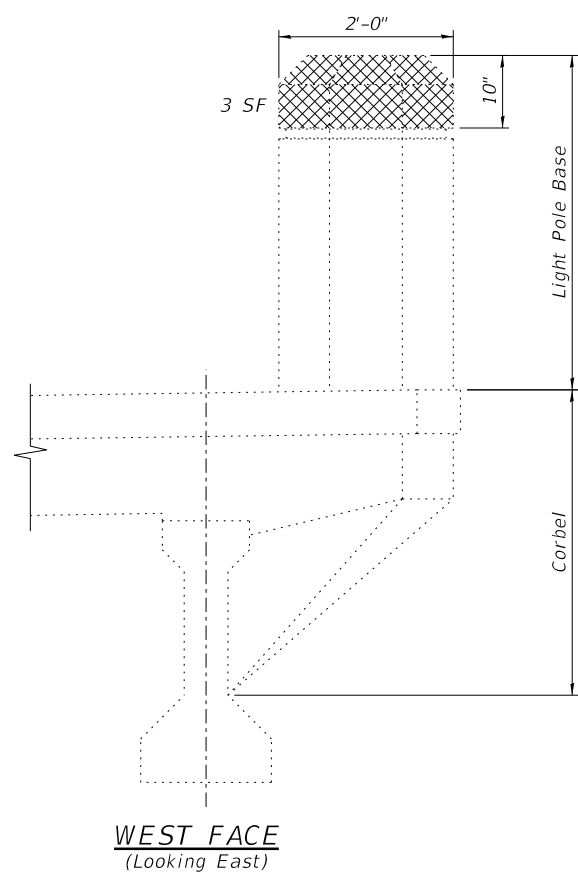
CITY OF ST. CHARLES, ILLINOIS

GENERAL PLAN AND ELEVATION
 STRUCTURE NO. 045-6855
 SHEET S-1 OF S-9

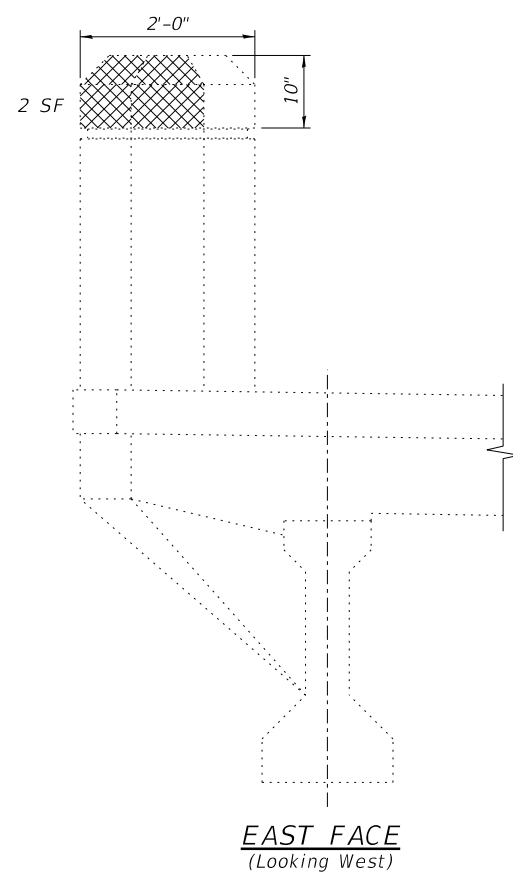
F.A.U. RTE.	SECTION	COUNTY	TOTAL SHEETS	SHEET NO.
1648		KANE	22	3

CONTRACT NO. _____

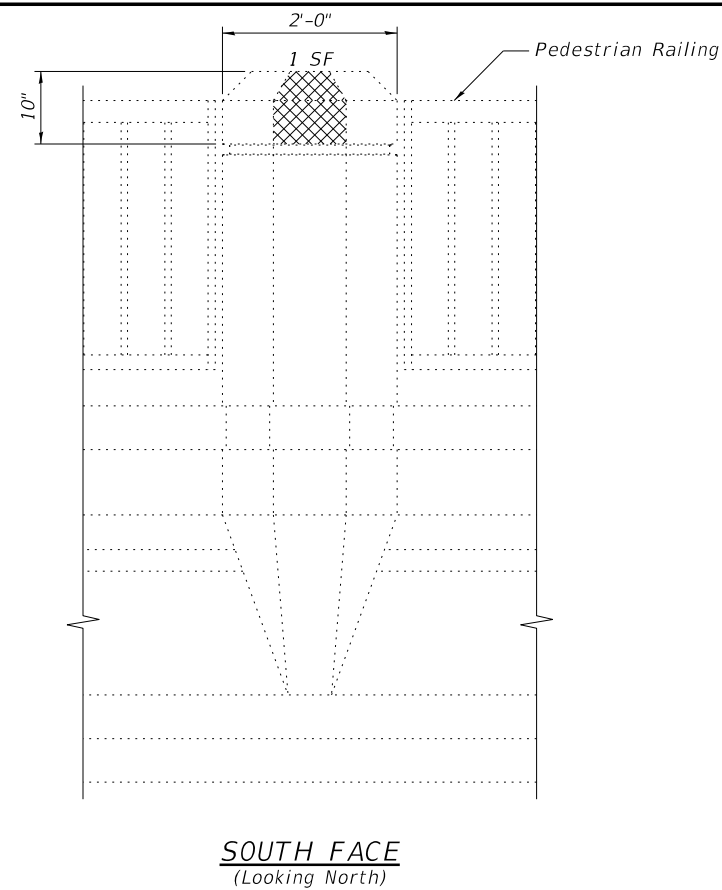
General Plan & Elev.dgn



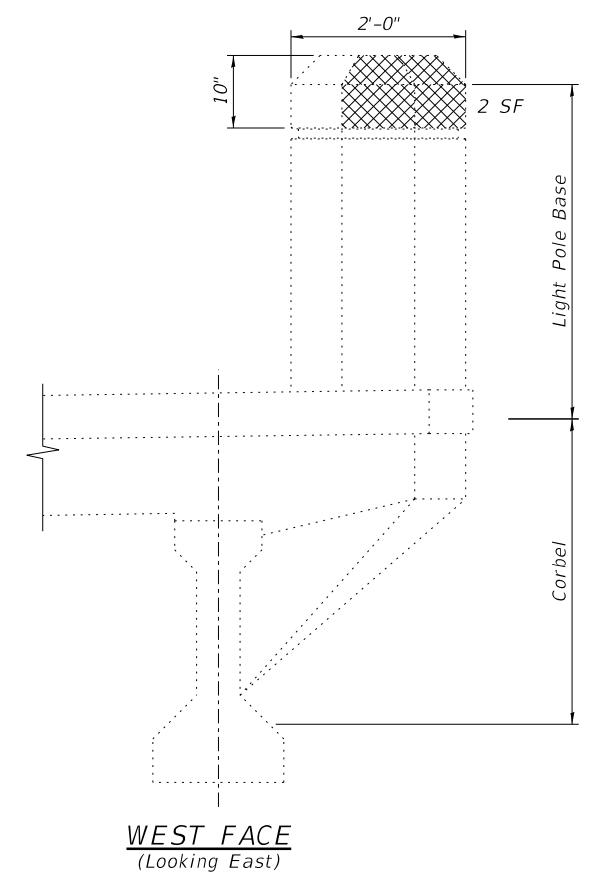
WEST FACE
(Looking East)



EAST FACE
(Looking West)



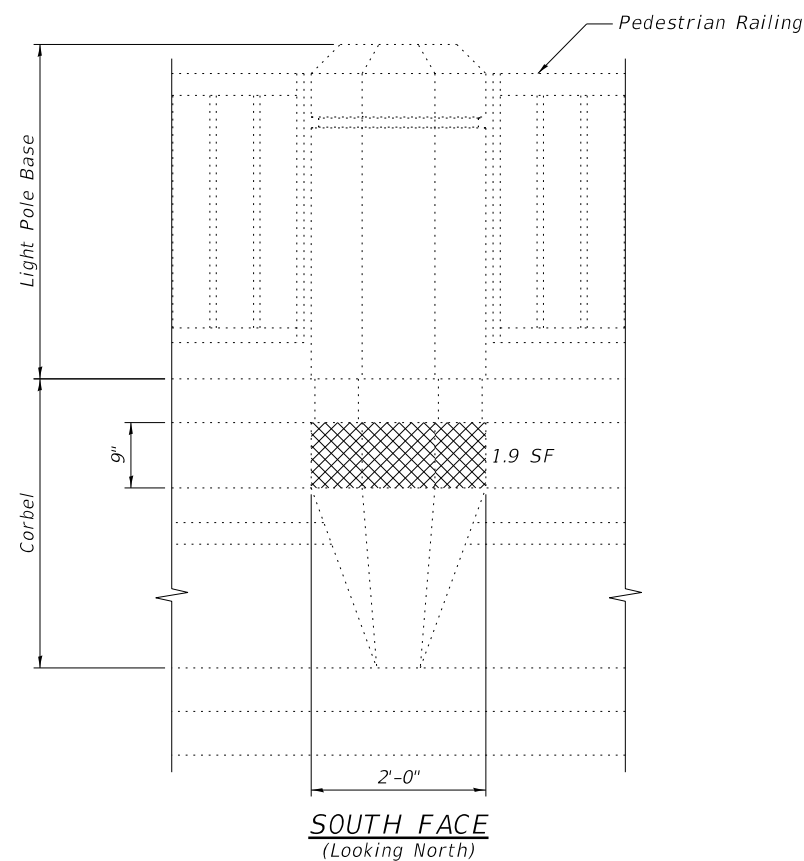
SOUTH FACE
(Looking North)



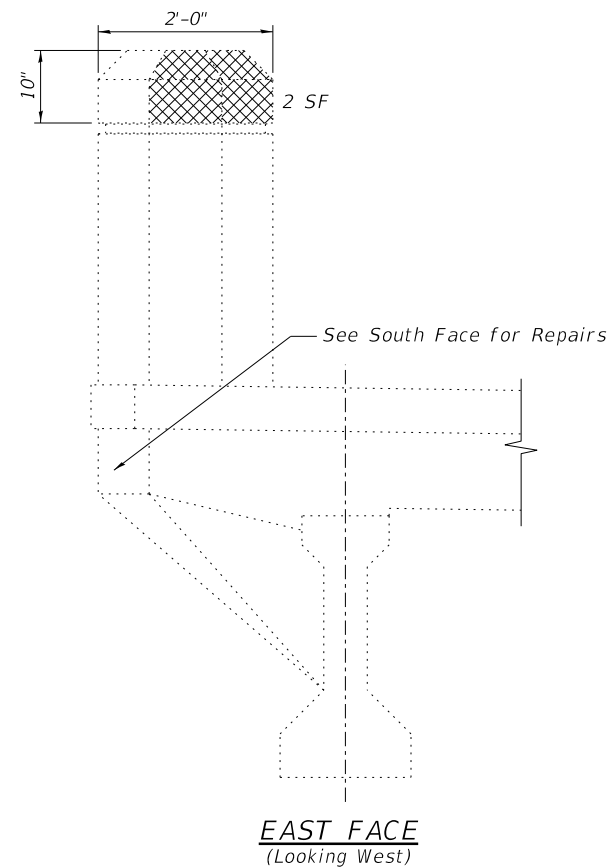
WEST FACE
(Looking East)

DETAIL A: PIER 1 SOUTH LIGHT POLE

DETAIL B: PIER 5 SOUTH LIGHT POLE



SOUTH FACE
(Looking North)



EAST FACE
(Looking West)

DETAIL C: PIER 6 SOUTH LIGHT POLE


BILL OF MATERIAL

ITEM	UNIT	TOTAL
Structural Repair of Concrete (Depth Equal to or Less Than 5 Inches)	SF	11.9

NOTES:

- The Engineer shall sound all of the light pole bases and corbels to determine exact location and size of Structural Repair of Concrete (Depth Equal to or Less Than 5 Inches) at time of construction.
- Structural Repair of Concrete (Depth Equal to or Less Than 5 Inches) shall be as specified in the latest version of IDOT's Guide Bridge Special Provision (GBSP) 53, "Structural Repair of Concrete".
- The details with repair quantities on top of the light pole bases include the repair areas required on the top faces.

LEGEND

 Structural Repair of Concrete (Depth Equal to or Less Than 5 Inches)

\\Light Pole Blister Repair Details.dgn

benesch 1230 East Diehl Drive, Suite 109
Naperville, Illinois 60563
630-577-9100 Job No. 10333.11

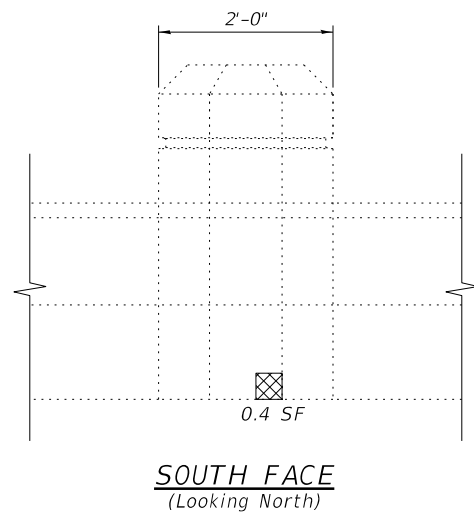
FILE NAME =	USER NAME = rcook	DESIGNED - RPC	REVISED -
Light Pole Blister Repair Details.dgn		CHECKED - SLV	REVISED -
	PLOT SCALE =	DRAWN - RPC	REVISED -
	PLOT DATE = 5/15/2023	CHECKED - SLV	REVISED -

CITY OF ST. CHARLES, ILLINOIS

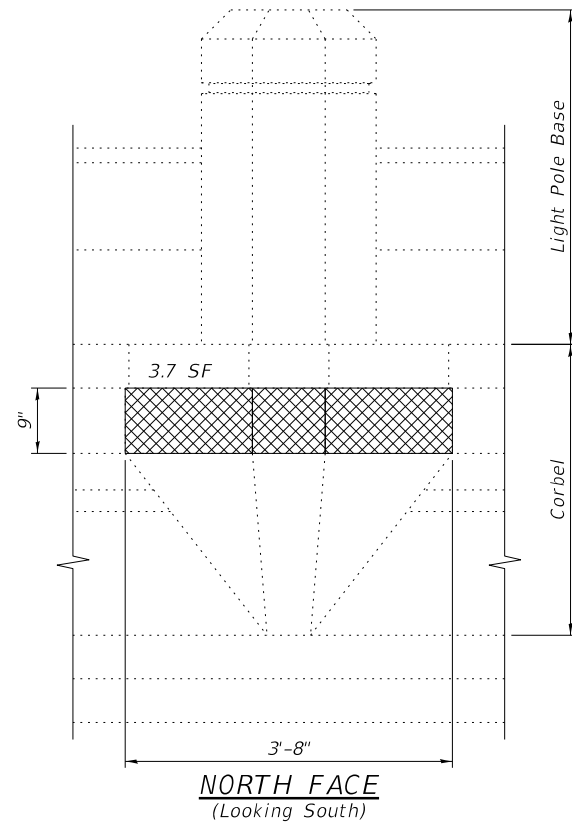
LIGHT POLE BASE AND CORBEL REPAIR DETAILS (1 OF 3)
STRUCTURE NO. 045-6855

SHEET S-3 OF S-9

F.A.U. RTE.	SECTION	COUNTY	TOTAL SHEETS	SHEET NO.
1648		KANE	22	5
CONTRACT NO.				
ILLINOIS				

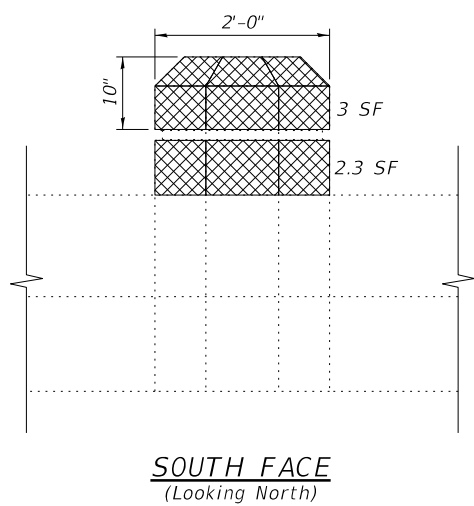


SOUTH FACE
(Looking North)

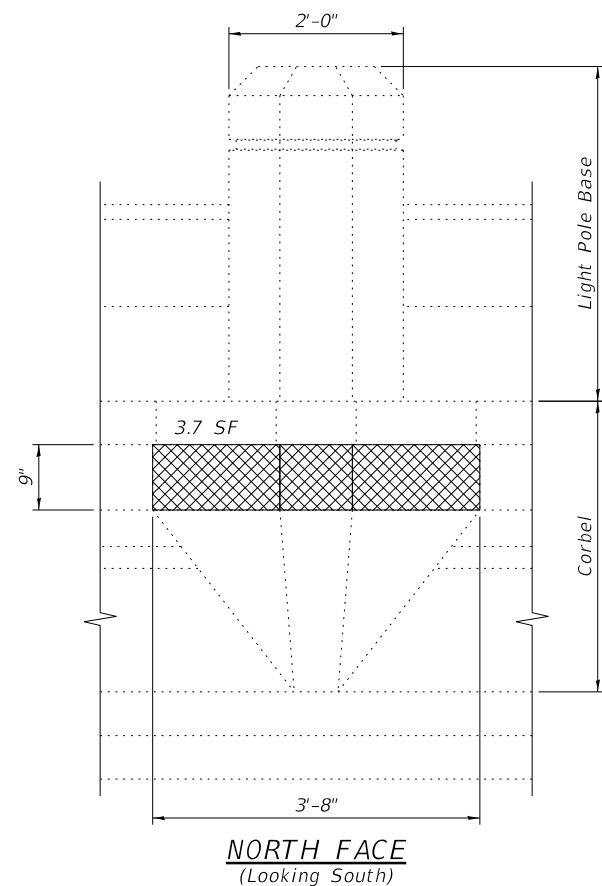


NORTH FACE
(Looking South)

DETAIL D: PIER 1 NORTH LIGHT POLE BASE

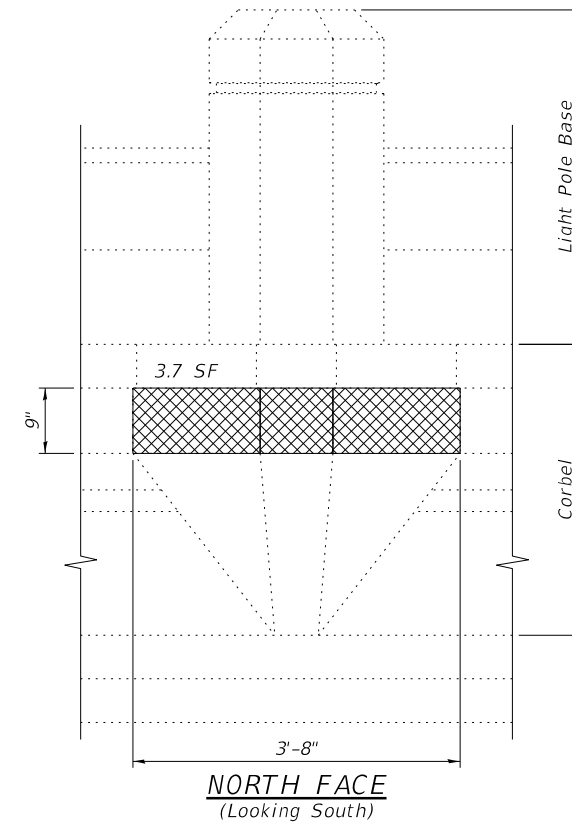


SOUTH FACE
(Looking North)



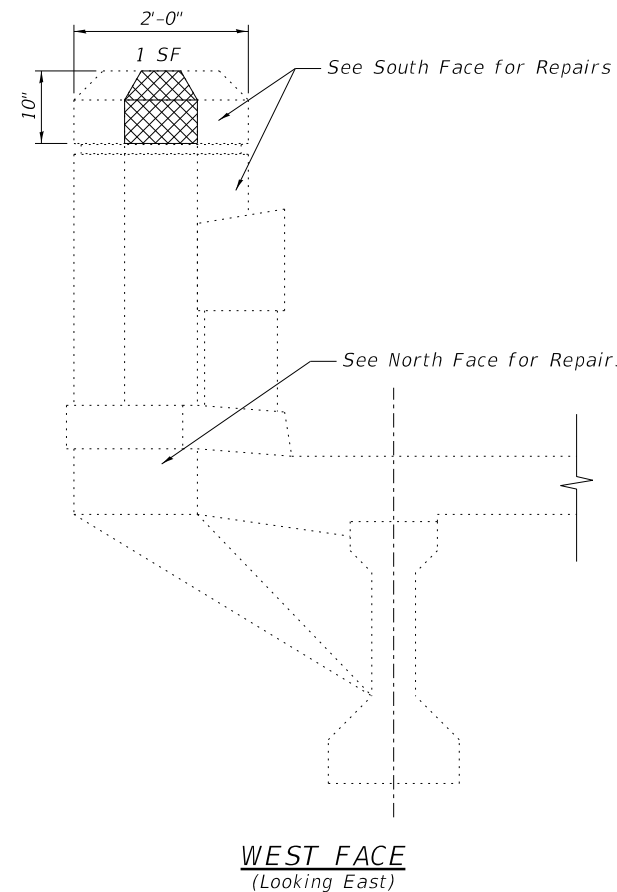
NORTH FACE
(Looking South)

DETAIL G: PIER 5 NORTH LIGHT POLE BASE

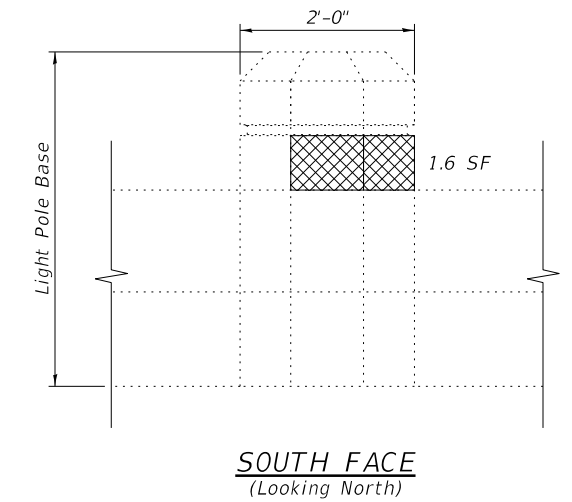


NORTH FACE
(Looking South)

DETAIL E: PIER 2 NORTH LIGHT POLE BASE



WEST FACE
(Looking East)



SOUTH FACE
(Looking North)

DETAIL F: PIER 3 NORTH LIGHT POLE BASE

BILL OF MATERIAL

ITEM	UNIT	TOTAL
Structural Repair of Concrete (Depth Equal to or Less Than 5 Inches)	SF	19.4

NOTES:

- The Engineer shall sound all of the light pole bases and corbels to determine exact location and size of Structural Repair of Concrete (Depth Equal to or Less Than 5 Inches) at time of construction.
- Structural Repair of Concrete (Depth Equal to or Less Than 5 Inches) shall be as specified in the latest version of IDOT's Guide Bridge Special Provision (GBSP) 53, "Structural Repair of Concrete".
- The details with repair quantities on top of the light pole bases include the repair areas required on the top faces.

LEGEND

Structural Repair of Concrete (Depth Equal to or Less Than 5 Inches)

benesch
1230 East Diehl Drive, Suite 109
Naperville, Illinois 60563
630-577-9100 Job No. 10333.11

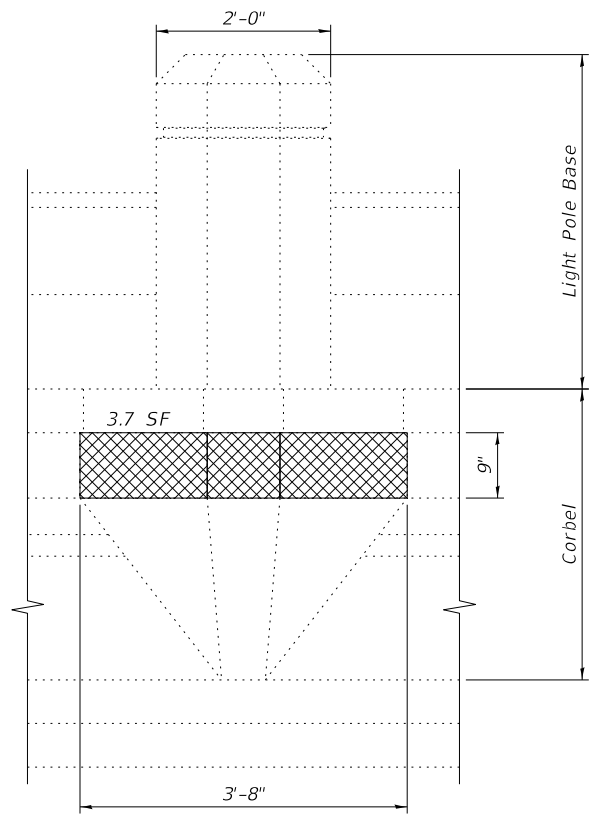
FILE NAME =	USER NAME = rcook	DESIGNED - RPC	REVISED -
Light Pole Blister Repair Details.dgn		CHECKED - SLV	REVISED -
	PLOT SCALE =	DRAWN - RPC	REVISED -
	PLOT DATE = 5/15/2023	CHECKED - SLV	REVISED -

CITY OF ST. CHARLES, ILLINOIS

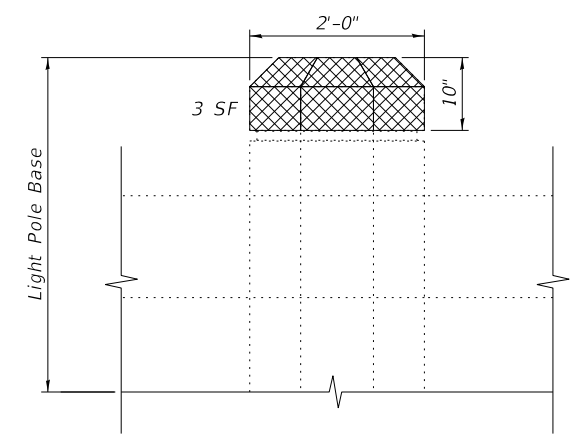
LIGHT POLE BASE AND CORBEL REPAIR DETAILS (2 OF 3)
STRUCTURE NO. 045-6855

SHEET S-4 OF S-9

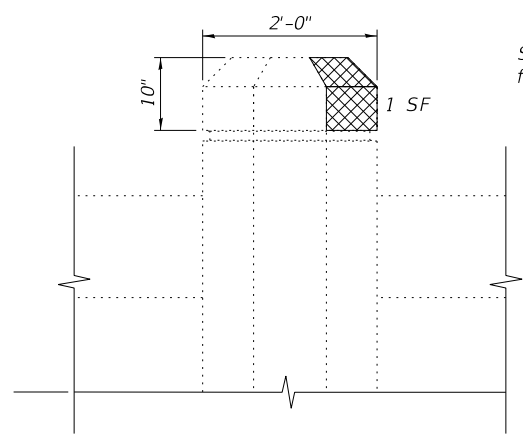
F.A.U. RTE.	SECTION	COUNTY	TOTAL SHEETS	SHEET NO.
1648		KANE	22	6
CONTRACT NO.				
ILLINOIS				



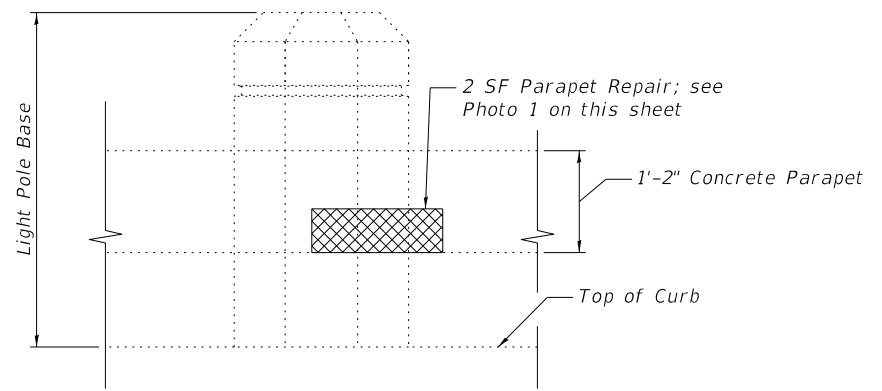
DETAIL H: PIER 6 NORTH LIGHT POLE BASE



SOUTH FACE (Looking North)



NORTH FACE (Looking South)



SOUTH FACE (Looking North)

DETAIL J: PIER 7 NORTH LIGHT POLE BASE



PHOTO 1 (North Parapet Elevation at Pier 7, Looking Northeast)

BILL OF MATERIAL

ITEM	UNIT	TOTAL
Structural Repair of Concrete (Depth Equal to or Less Than 5 Inches)	SF	10.7

NOTES:

- The Engineer shall sound all of the light pole bases and corbels to determine exact location and size of Structural Repair of Concrete (Depth Equal to or Less Than 5 Inches) at time of construction.
- Structural Repair of Concrete (Depth Equal to or Less Than 5 Inches) shall be as specified in the latest version of IDOT's Guide Bridge Special Provision (GBSP) 53, "Structural Repair of Concrete".
- The details with repair quantities on top of the light pole bases include the repair areas required on the top faces.

LEGEND

Structural Repair of Concrete (Depth Equal to or Less Than 5 Inches)

Light Pole Blister Repair Details.dgn

benesch 1230 East Diehl Drive, Suite 109
Naperville, Illinois 60563
630-577-9100 Job No. 10333.11

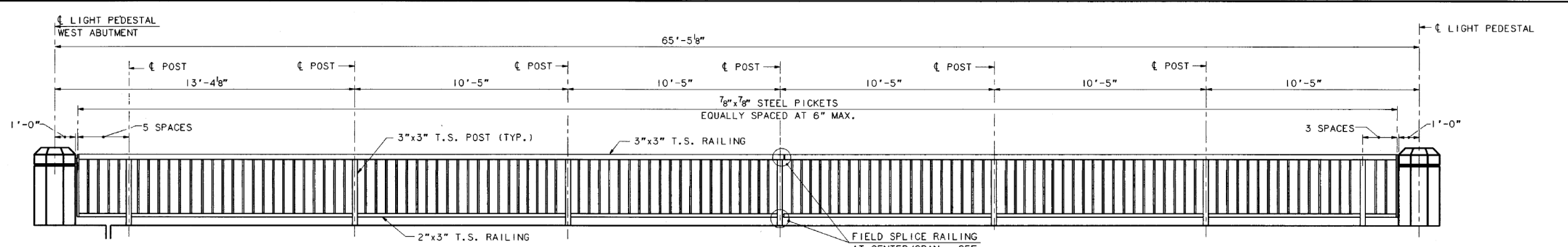
FILE NAME =	USER NAME = rcook	DESIGNED - RPC	REVISED -
Light Pole Blister Repair Details.dgn		CHECKED - SLV	REVISED -
	PLOT SCALE =	DRAWN - RPC	REVISED -
	PLOT DATE = 5/15/2023	CHECKED - SLV	REVISED -

CITY OF ST. CHARLES, ILLINOIS

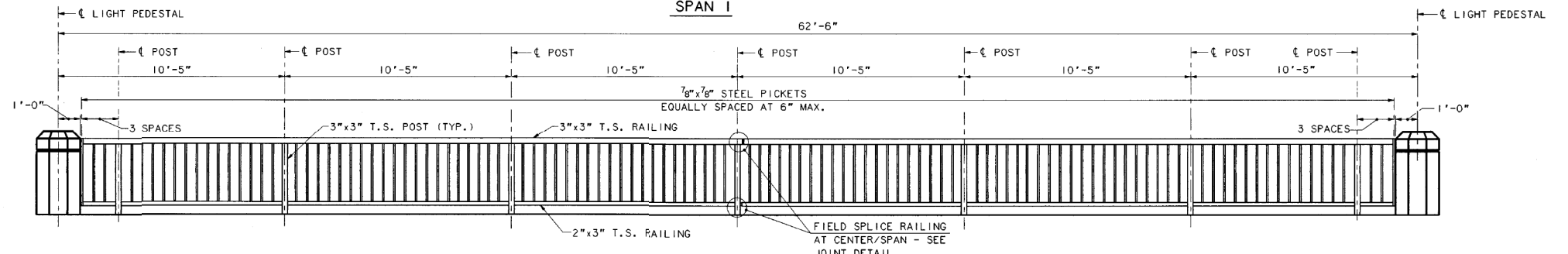
LIGHT POLE BASE AND CORBEL REPAIR DETAILS (3 OF 3)
STRUCTURE NO. 045-6855

SHEET S-5 OF S-9

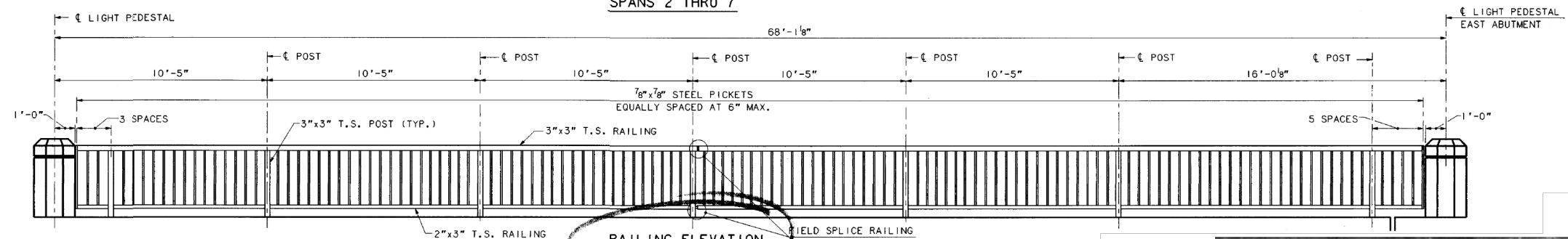
F.A.U. RTE.	SECTION	COUNTY	TOTAL SHEETS	SHEET NO.
1648		KANE	22	7
CONTRACT NO.				
ILLINOIS				



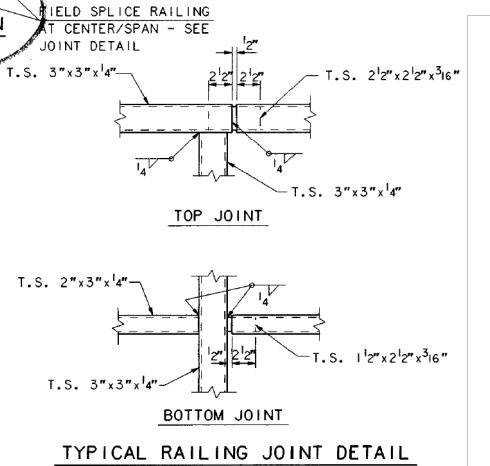
RAILING ELEVATION SPAN 1



RAILING ELEVATION SPANS 2 THRU 7



RAILING ELEVATION SPAN 8



FILE ID: C:\G:\P\1608\BRETTL\FB
DWG. NAME: BDET11
PLOTS REQUIRED:
PLOTS MADE:

In Charge: HNTB
Designed By: BRT
Drawn By: GJH
Checked By: DP
Approved By: PCA

HNTB HOWARD NEEDLES TAMMEN & BERGENDOFF ARCHITECTS ENGINEERS PLANNERS

RH&A R.H. ANDERSON & ASSOCIATES, INC.

CITY OF ST. CHARLES
PRAIRIE STREET BRIDGE

REVISIONS

CITY OF ST. CHARLES
2 EAST MAIN STREET
ST. CHARLES, ILLINOIS 60174

PEDESTRIAN RAILING
DETAILS

144 JAN - 7 2003
ENGINEERING DEPT.

S-13

Scale Date 12-21-92

benesch 1230 East Diehl Drive, Suite 109
Naperville, Illinois 60563
630-577-9100 Job No. 10333.11

FILE NAME =	USER NAME = rcook	DESIGNED - RPC	REVISED -
PLOT SCALE =	CHECKED - SLV	CHECKED - SLV	REVISED -
PLOT DATE = 5/15/2023	DRAWN - RPC	DRAWN - RPC	REVISED -
	CHECKED - SLV	CHECKED - SLV	REVISED -

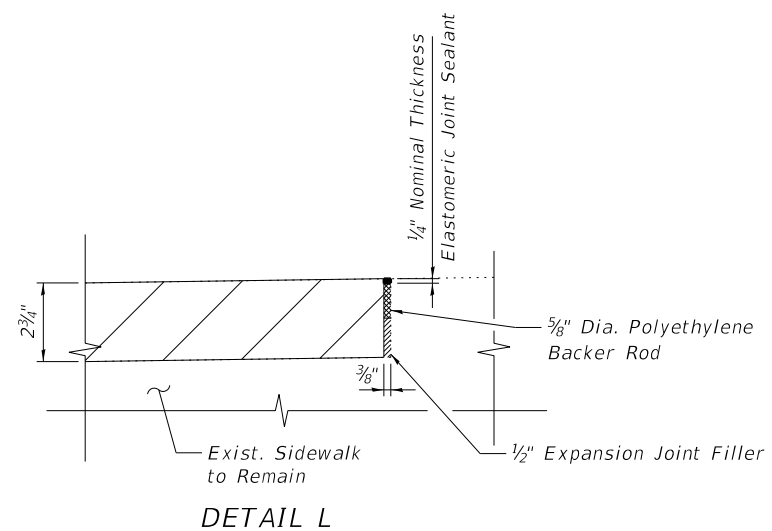
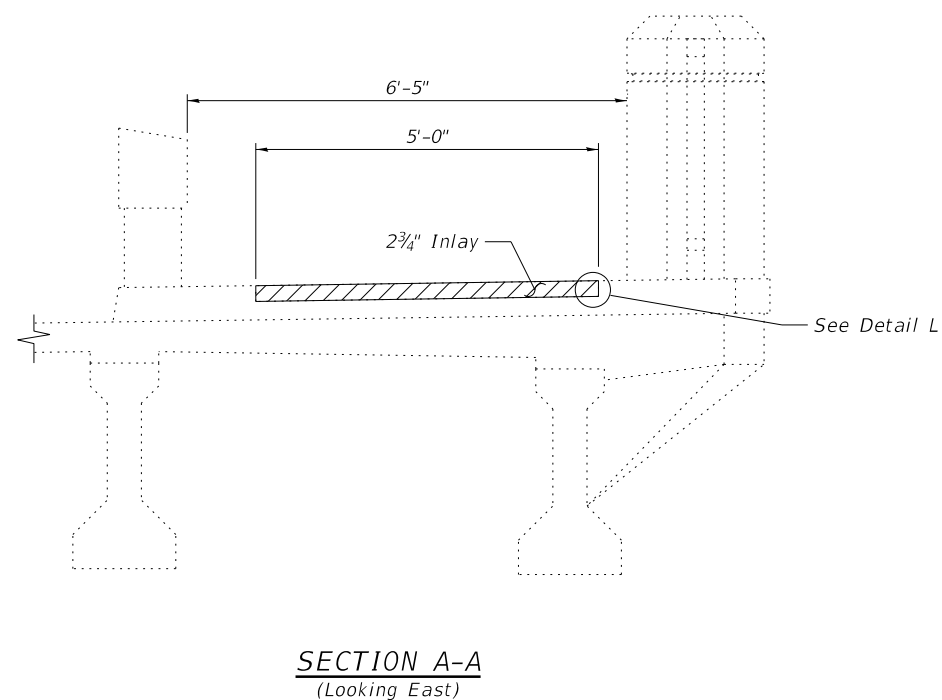
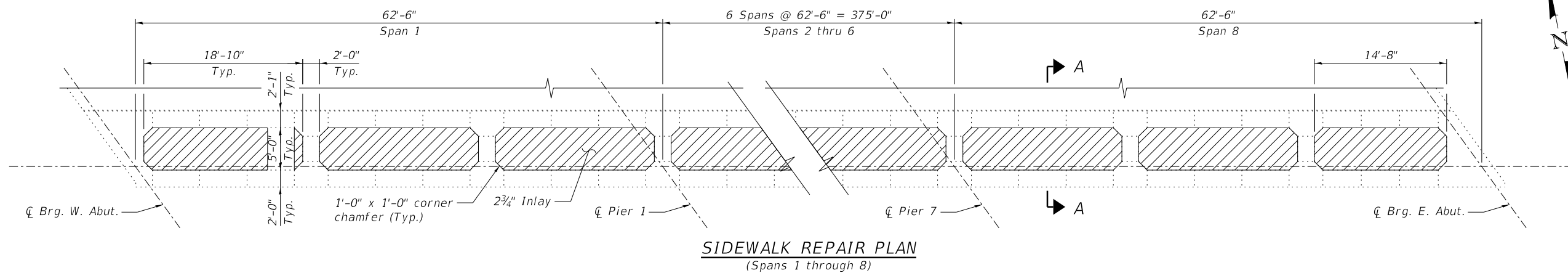
CITY OF ST. CHARLES, ILLINOIS

PEDESTRIAN RAILING DETAILS
STRUCTURE NO. 045-6855

SHEET S-6 OF S-9

FOR INFORMATION ONLY

F.A.U. RTE.	SECTION	COUNTY	TOTAL SHEETS	SHEET NO.
1648		KANE	22	8
CONTRACT NO.				
ILLINOIS				



NOTE:
All sidewalk inlay removal and replacement shall be performed in accordance with Special Provision "Sidewalk Inlay".

BILL OF MATERIAL

ITEM	UNIT	TOTAL
SIDEWALK INLAY	SQ YD	244

LEGEND

Sidewalk Inlay Removal and Replacement

\\work-files\Sidewalk_Repairs.dgn



1230 East Diehl Drive, Suite 109
Naperville, Illinois 60563
630-577-9100 Job No. 10333.11

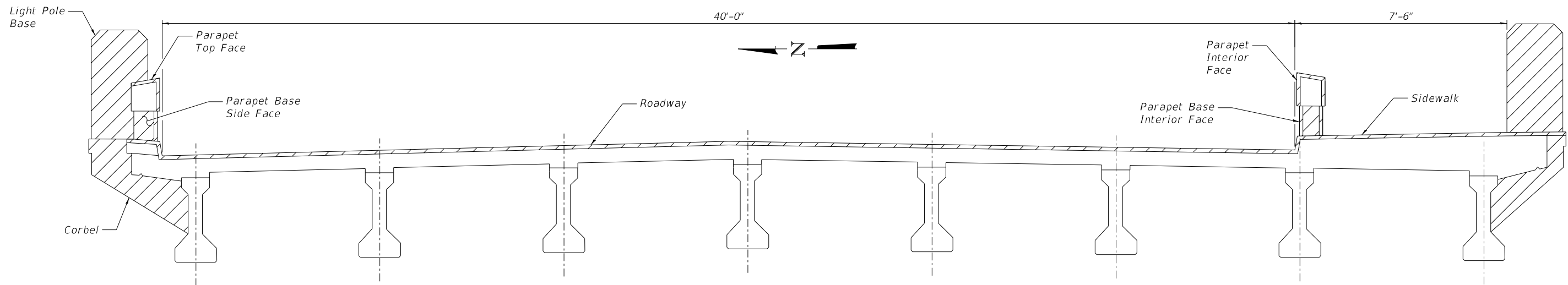
FILE NAME =	USER NAME = rcook	DESIGNED - RPC	REVISED -
Sidewalk Repair.dgn		CHECKED - SLV	REVISED -
	PLOT SCALE =	DRAWN - RPC	REVISED -
	PLOT DATE = 5/15/2023	CHECKED - SLV	REVISED -

CITY OF ST. CHARLES, ILLINOIS

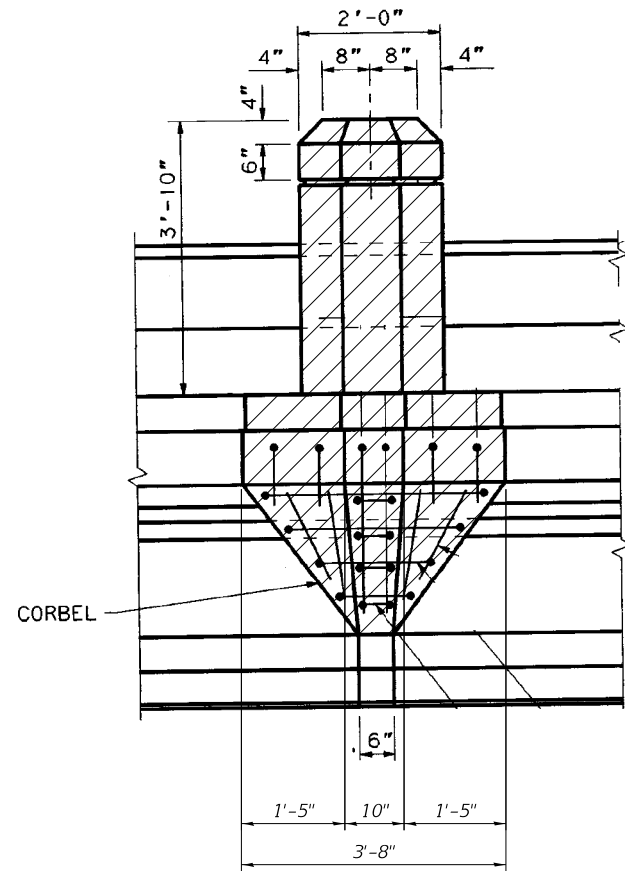
SIDEWALK REPAIR DETAILS
STRUCTURE NO. 045-6855

SHEET S-7 OF S-9

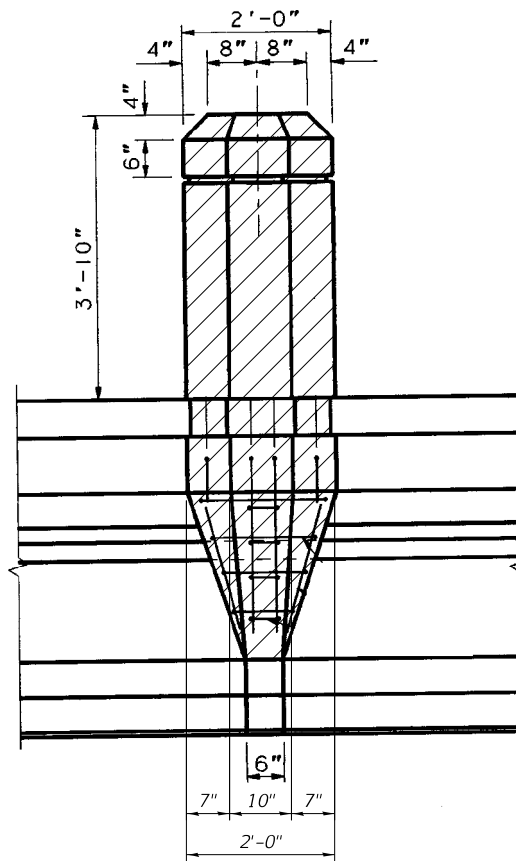
F.A.U. RTE.	SECTION	COUNTY	TOTAL SHEETS	SHEET NO.
1648		KANE	22	9
CONTRACT NO.				
ILLINOIS				



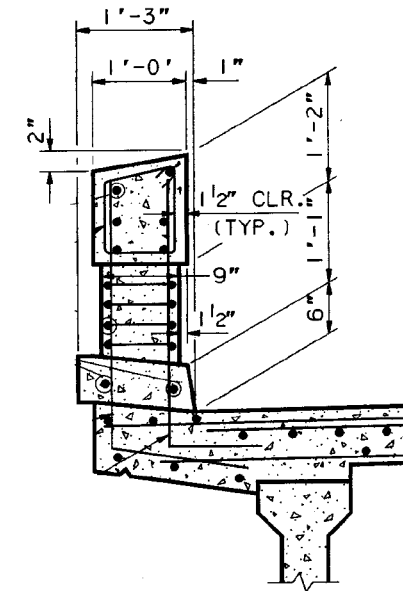
TYPICAL SECTION
(Looking East)



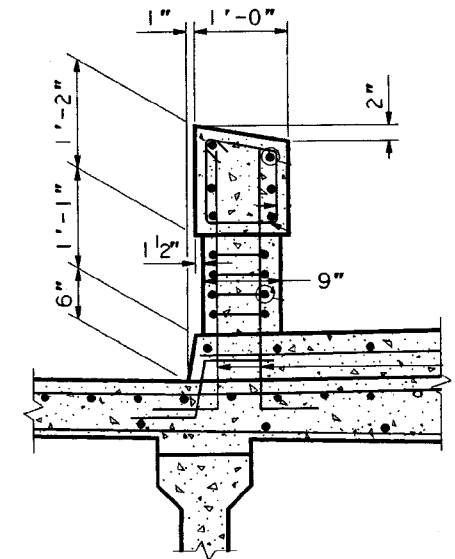
ELEVATION AT NORTH LIGHT POLE BASE AND CORBEL
(Looking South)



ELEVATION AT SOUTH LIGHT POLE BASE AND CORBEL
(Looking North)



TYPICAL SECTION THRU NORTH PARAPET
(Looking East)
Protective Coat not shown for clarity



TYPICAL SECTION THRU SOUTH PARAPET
(Looking East)
Protective Coat not shown for clarity

NOTE:

1. Protective Coat shall be applied to the roadway, sidewalk, all faces of the south parapet and south parapet bases, top and interior face (roadway face) of the north parapet, side and interior faces of the north parapet bases, all faces of the light pole bases, and all faces of the corbels.

BILL OF MATERIAL

ITEM	UNIT	TOTAL
PROTECTIVE COAT	SQ YD	3246

LEGEND

Protective Coat



1230 East Diehl Drive, Suite 109
Naperville, Illinois 60563
630-577-9100 Job No. 10333.11

FILE NAME =	USER NAME = rcook	DESIGNED - RPC	REVISED -
Protective Coat.dgn		CHECKED - SLV	REVISED -
	PLOT SCALE =	DRAWN - RPC	REVISED -
	PLOT DATE = 5/15/2023	CHECKED - SLV	REVISED -

CITY OF ST. CHARLES, ILLINOIS

PROTECTIVE COAT DETAILS
STRUCTURE NO. 045-6855

SHEET S-8 OF S-9

F.A.U. RTE.	SECTION	COUNTY	TOTAL SHEETS	SHEET NO.
1648		KANE	22	10
CONTRACT NO.				

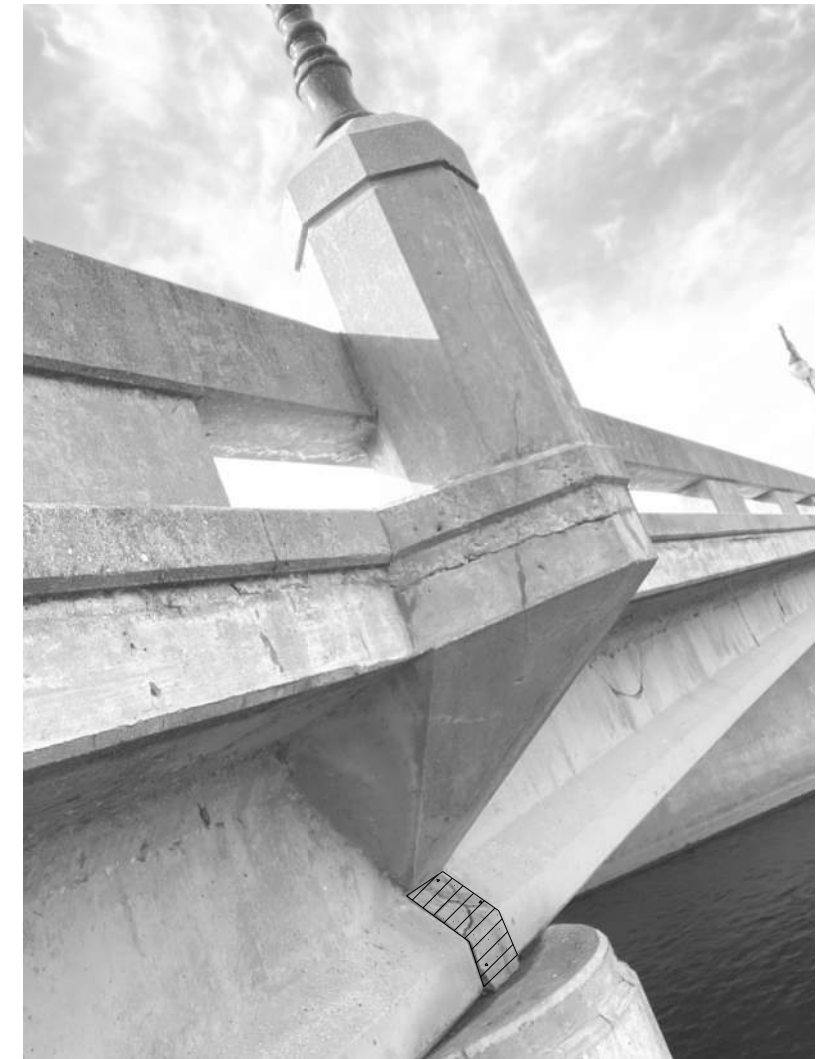
ILLINOIS



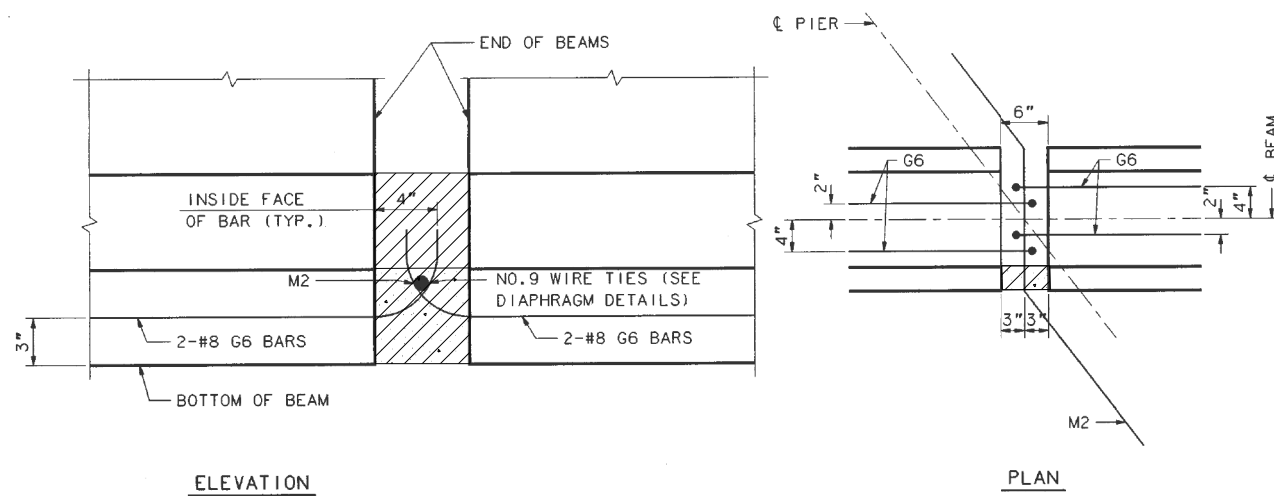
EXAMPLE PIER DIAPHRAGM SOUTH END WITH DETERIORATION
(For information only)



EXAMPLE PIER DIAPHRAGM NORTH END WITH DETERIORATION
(For information only)



EXAMPLE PIER DIAPHRAGM NORTH END WITH DETERIORATION
(For information only)



TYPICAL END DETAIL AT PIER DIAPHRAGM
(For information only)

- NOTES:**
- At the north and south ends of each concrete pier diaphragm, chip away loose areas of concrete, then clean and paint all exposed diaphragm steel as specified in the Special Provisions for "Cleaning and Painting Exposed Rebar". Exact locations to be determined in the field by the Engineer.

BILL OF MATERIAL

ITEM	UNIT	TOTAL
CLEANING AND PAINTING EXPOSED REBAR	SF	21

LEGEND

Diaphragm location to be chipped and painted per Special Provisions for Cleaning and Painting Exposed Rebar" as required based on condition of the concrete. See Note 1.

benesch 1230 East Diehl Drive, Suite 109
Naperville, Illinois 60563
630-577-9100 Job No. 10333.11

FILE NAME =	USER NAME = rcook	DESIGNED - RPC	REVISED -
Diaph End Repair Details.dgn		CHECKED - SLV	REVISED -
	PLOT SCALE =	DRAWN - RPC	REVISED -
	PLOT DATE = 5/15/2023	CHECKED - SLV	REVISED -

CITY OF ST. CHARLES, ILLINOIS

**DIAPHRAGM END REPAIR DETAILS
STRUCTURE NO. 045-6855**

SHEET S-9 OF S-9

F.A.U. RTE.	SECTION	COUNTY	TOTAL SHEETS	SHEET NO.
1648		KANE	22	11
CONTRACT NO.				

ILLINOIS

PRAIRIE STREET CONSTRUCTION STAGING

CONTRACTOR SHALL USE THE FOLLOWING APPLICABLE IDOT STANDARDS FOR MAINTENANCE OF TRAFFIC DURING PRAIRIE STREET BRIDGE RECONSTRUCTION:

- 701001 OFF-RD OPERATIONS, 2L, 2W, MORE THAN 15' AWAY
- 701006 OFF-RD OPERATIONS, 2L, 2W, 15' TO 24" FROM PAVEMENT EDGE
- 701606 URBAN SINGLE LANE CLOSURE, MULTILANE, 2W WITH MOUNTABLE MEDIAN
- 701701 URBAN LANE CLOSURE, MULTILANE INTERSECTION
- 701801 SIDEWALK, CORNER OR CROSSWALK CLOSURE
- 701901 TRAFFIC CONTROL DEVICES

PRAIRIE STREET DETOUR NOTES

CONTRACTOR SHALL PERFORM NECESSARY BRIDGE CONSTRUCTION UTILIZING A TRAFFIC DETOUR OF PRAIRIE STREET DURING THE DETOUR, PRAIRIE STREET SHALL BE CLOSED TO THRU TRAFFIC AND DETOURED USING S 3RD STREET, ILLINOIS AVENUE, AND RIVERSIDE AVENUE AS SHOWN ON MOT-2. THE CONTRACTOR SHALL USE THE FOLLOWING APPLICABLE IDOT STANDARDS:

- 701801 SIDEWALK, CORNER OR CROSSWALK CLOSURE
- 701901 TRAFFIC CONTROL DEVICES

FILE NAME =	USER NAME =	DESIGNED - JBL	REVISED -
\$FILEABBREV\$		CHECKED - SJP	REVISED -
	PLOT SCALE =	DRAWN -	REVISED -
	PLOT DATE =	CHECKED -	REVISED -

CITY OF ST. CHARLES, ILLINOIS

**MAINTENANCE OF TRAFFIC
GENERAL NOTES & CONSTRUCTION STAGING**

SHEET MOT-1 OF MOT-11

F.A.E. RTE.	SECTION	COUNTY	TOTAL SHEETS	SHEET NO.
1648		KANE	22	12
CONTRACT NO.				
ILLINOIS				

5/15/2023

DETOUR NOTES

- PRAIRIE ST TO BE CLOSED BETWEEN S 1ST ST AND RIVERSIDE DR FOR BRIDGE RECONSTRUCTION.
- THE CONTRACTOR IS RESPONSIBLE FOR ANY DETOURS FOR PRAIRIE ST AND MUST COORDINATE WITH THE CITY OF ST CHARLES PRIOR TO SETTING UP ANY DETOURS.
- THE CONTRACTOR IS RESPONSIBLE FOR ENSURING THAT ALL BARRICADES, SIGNS, LIGHTS AND OTHER DEVICES INSTALLED BY THEIR FORCES ARE IN PLACE AND OPERATING 24 HOURS EACH DAY INCLUDING SUNDAYS AND HOLIDAYS DURING THE TIME THIS CONSTRUCTION IS IN EFFECT.
- ALL EXISTING SIGNING THAT IS NOT APPLICABLE WHILE THE CONSTRUCTION IS IN EFFECT MUST BE COMPLETELY COVERED BY THE CONTRACTOR. THE CONTRACTOR SHALL REMOVE EXISTING PAVEMENT MARKINGS THAT CONFLICT WITH THE PROPOSED DETOURS
- ALL SIGNING MUST BE IN ACCORDANCE WITH THE LATEST APPLICABLE PROVISIONS OF THE STATE OF ILLINOIS "STANDARD SPECIFICATIONS FOR ROAD AND BRIDGE CONSTRUCTION", THE DETAILS IN THESE PLANS MUST BE IN ACCORDANCE WITH THE LATEST EDITION OF THE IDOT BUREAU OF DESIGN AND ENVIRONMENT HIGHWAY STANDARDS AND THE LATEST EDITION OF THE "MANUAL ON UNIFORM TRAFFIC CONTROL DEVICES".
- THE CONTRACTOR WILL BE RESPONSIBLE FOR THE PROPER LOCATION, INSTALLATION, MAINTENANCE, RELOCATION AND REMOVAL OF ALL TRAFFIC CONTROL DEVICES AND AS DIRECTED BY THE ENGINEER.
- THE SIZES OF ALL SIGNS NOT SPECIFIED IN THESE PLANS MUST BE AS REQUIRED BY THE MANUAL ON UNIFORM TRAFFIC CONTROL DEVICES.
- AS A MINIMUM, ALL AMBER FLASHING LIGHTS THAT ARE REQUIRED MUST MEET THE REQUIREMENTS FOR TYPE A - LOW INTENSITY FLASHING LIGHTS IN ARTICLE 702.06 OF THE STANDARD SPECIFICATIONS. ALL LIGHTS SHALL OPERATE DURING HOURS OF DARKNESS.
- THE CONTRACTOR MUST MAINTAIN ACCESS TO ALL PRIVATE AND RESIDENTIAL DRIVEWAYS DURING CONSTRUCTION.
- CLOSED SIDEWALKS MUST BE APPROPRIATELY BARRICADED. USE STANDARD 701801.
- THE "SIDEWALK CLOSED / USE OTHER SIDE" SIGN MUST BE PLACED AT THE NEAREST CROSSWALK OR INTERSECTION TO EACH END OF THE CLOSURE. WHEN THE CLOSURE OCCURS AT A CORNER, THE SIGNS MUST BE ERECTED ON THE CORNER ACROSS THE STREET FROM THE CLOSURE. THE "SIDEWALK CLOSED" SIGNS MUST BE USED AT THE ENDS OF THE ACTUAL CLOSURES.
- ALL OPENED WALKWAYS MUST BE CLEARLY IDENTIFIED AND ADEQUATELY PROTECTED FROM MOTOR VEHICLE TRAFFIC AND FREE OF ANY OBSTRUCTIONS AND HAZARDS SUCH AS HOLES, DEBRIS, MUD, CONSTRUCTION EQUIPMENT, STORED MATERIALS, ETC.
- ALL HAZARDS, DITCHES, TRENCHES, EXCAVATIONS, ETC. NEAR OR ADJACENT TO WALKWAYS MUST BE CLEARLY DELINEATED AND ADEQUATELY PROTECTED.
- THE CONTRACTOR MUST CONDUCT THEIR WORK IN SUCH A MANNER THAT EMERGENCY VEHICLES WILL HAVE ACCESS TO THE WORK AREA AT ALL TIMES.
- THE CONTRACTOR MUST NOTIFY THE CITY OF ST CHARLES 72 HOURS BEFORE COMMENCING CONSTRUCTION.
- BARRICADES MUST BE SET ACROSS ALL LANES OF TRAFFIC.

SIGN LEGEND

- W20-2 (O) 48
- W20-3 (O) 48
- W20-3 (O) 48
- R11-2 4830
- M4-9 (O) 2430
- M4-9R (O) 2430
- M4-9L (O) 2430
- M4-9R (O) 2430
- M4-9L (O) 2430
- M4-9L (O) 2430
- M4-8a (O) 2418
- M3-2 (O) 2412
- M3-4 (O) 2412
- SPECIAL (O) 1044
- W20-1103 (O) 48

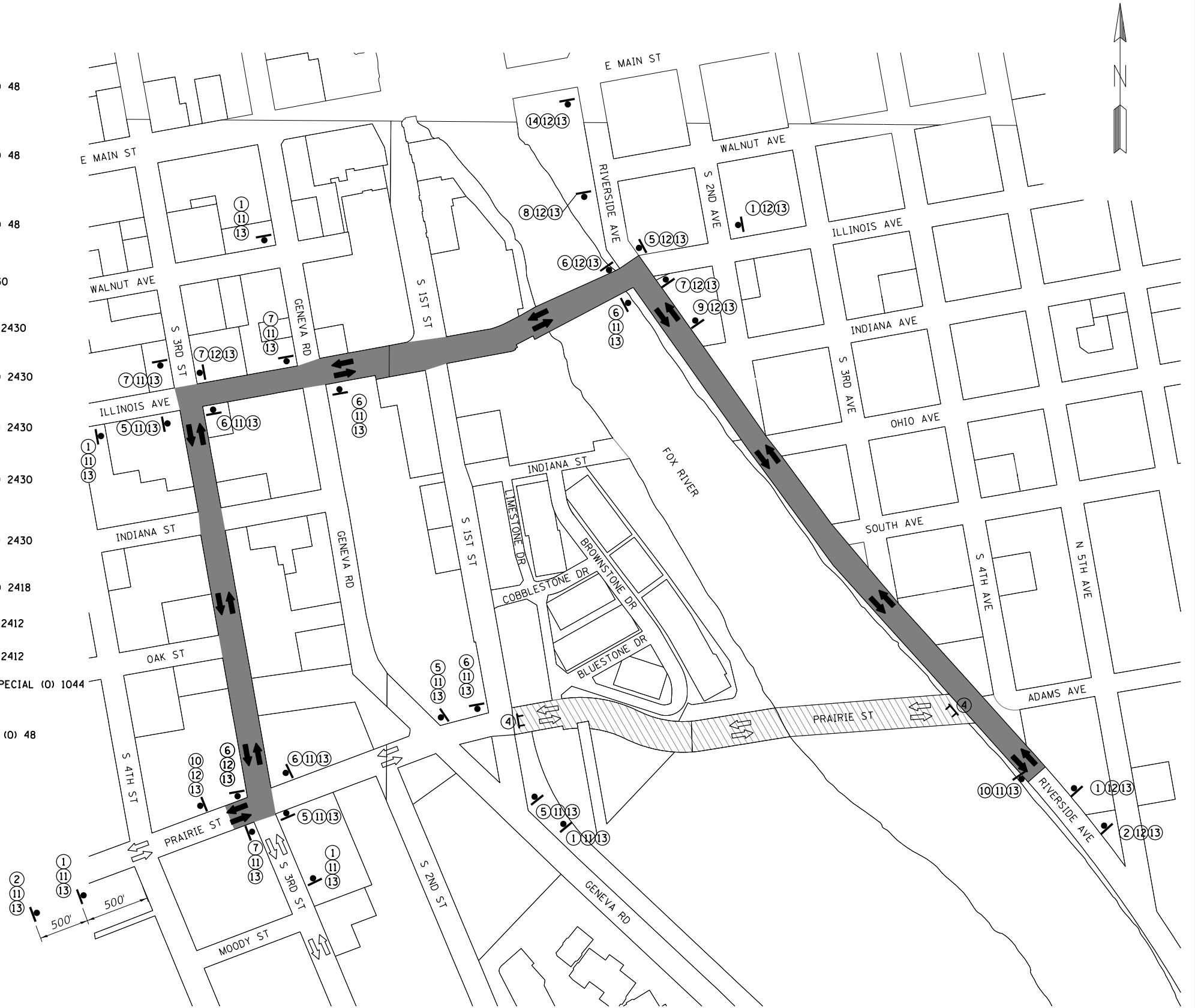
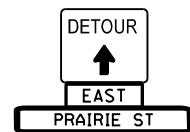
LEGEND

- WORK AREA
- DETOUR ROUTE
- TRAFFIC SIGN KEY (COMBINATION OF SIGNS)
- TYPE III BARRICADE WITH AMBER FLASHING LIGHTS
- SIGN ON PORTABLE OR PERMANENT SUPPORT
- DETOURED TRAFFIC DIRECTION
- EXISTING TRAFFIC DIRECTION

TYPICAL SIGN KEY

- 5 11 13 OR 5 11 13

TYPICAL LAYOUT OF SIGNS



benesch 1230 East Diehl Drive, Suite 109
Naperville, Illinois 60563
630-577-9100 Job No. 10333.11

FILE NAME =	USER NAME =	DESIGNED - JBL	REVISED -
\$FILEABBREVS		CHECKED - SJP	REVISED -
	PLOT SCALE =	DRAWN -	REVISED -
	PLOT DATE =	CHECKED -	REVISED -

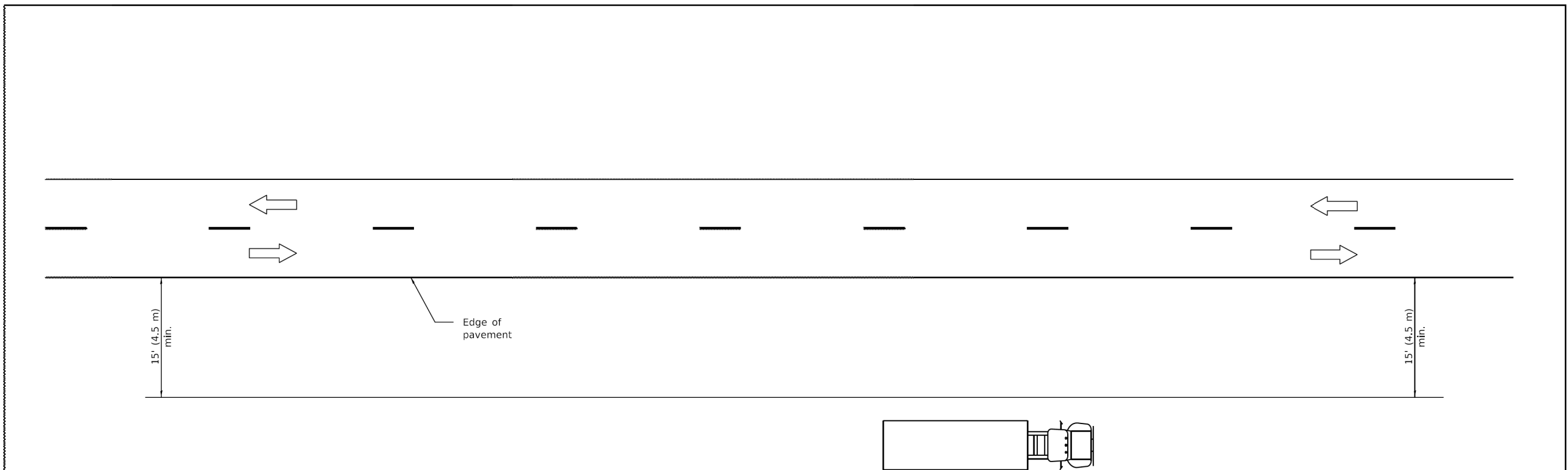
CITY OF ST. CHARLES, ILLINOIS

MAINTENANCE OF TRAFFIC
PRAIRIE ST DETOUR ROUTE

SHEET MOT-2 OF MOT-11

F.A.E. RTE.	SECTION	COUNTY	TOTAL SHEETS	SHEET NO.
1648		KANE	22	13
CONTRACT NO.				
ILLINOIS				

6/23/2023



TYPICAL APPLICATIONS

- Landscaping work
- Utility work
- Fencing contracts and maintenance
- Cleaning culverts

GENERAL NOTES

This Standard is used where at all times all vehicles, equipment, workers or their activities are more than 15' (4.5 m) from the edge of pavement.

When the work operation requires that two or more work vehicles cross the 15' (4.5 m) clear zone in any one hour, traffic control shall be according to Standard 701006.

All dimensions are in inches (millimeters) unless otherwise shown.

Illinois Department of Transportation	
PASSED <u>January 1, 2009</u> ENGINEER OF OPERATIONS <i>[Signature]</i>	ISSUED 1-1-97
APPROVED <u>January 1, 2009</u> ENGINEER OF DESIGN AND ENVIRONMENT <i>[Signature]</i>	

DATE	REVISIONS
1-1-09	Switched units to English (metric).
1-1-05	Revised title and notes.

**OFF-RD OPERATIONS,
2L, 2W, MORE THAN
15' (4.5 m) AWAY**

STANDARD 701001-02

benesch 1230 East Diehl Drive, Suite 109
 Naperville, Illinois 60563
 630-577-9100 Job No. 10333.11

FILE NAME =	USER NAME =	DESIGNED - JBL	REVISED -
\$FILEABBREVS		CHECKED - SJP	REVISED -
	PLOT SCALE =	DRAWN -	REVISED -
	PLOT DATE =	CHECKED -	REVISED -

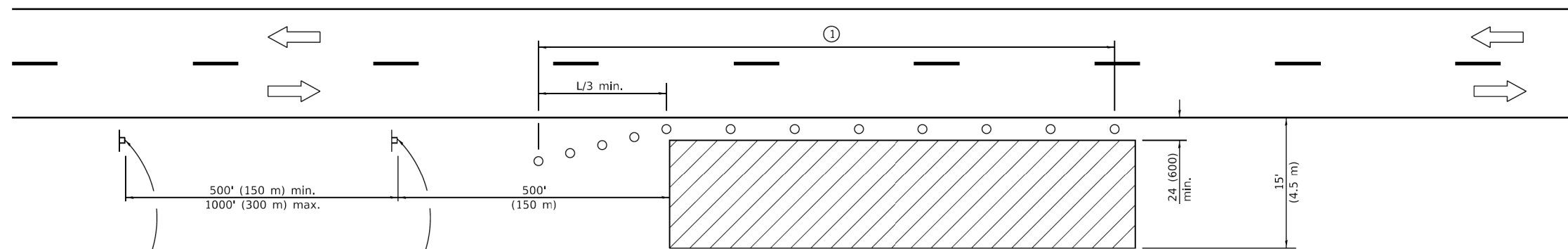
CITY OF ST. CHARLES, ILLINOIS

**MAINTENANCE OF TRAFFIC
IDOT STANDARD 701001**

SHEET MOT-3 OF MOT-11

F.A.E. RTE.	SECTION	COUNTY	TOTAL SHEETS	SHEET NO.
1648		KANE	22	14
CONTRACT NO.				
ILLINOIS				

5/15/2023



For contract construction projects



W20-1103(0)-48



W21-1(0)-48

For maintenance and utility projects



W20-1(0)-48

TYPICAL APPLICATIONS

- Utility operations
- Culvert extensions
- Side slope changes
- Guardrail installation and maintenance
- Delineator installation
- Landscaping operations
- Shoulder repair
- Sign installation and maintenance

SYMBOLS



Work area



Sign



Cone, drum or barricade

① When the work operation exceeds one hour, cones, drums or barricades shall be placed at 25' (8 m) centers for L/3 distance, and at 50' (15 m) centers through the remainder of the work area.

GENERAL NOTES

This Standard is used where any vehicles, equipment, workers or their activities will encroach in the area 15' (4.5 m) to 24' (600) from the edge of pavement.

Calculate L as follows:

SPEED LIMIT

FORMULAS

English (Metric)

40 mph (70 km/h) or less:

$$L = \frac{WS^2}{60} \quad L = \frac{WS^2}{150}$$

45 mph (80 km/h) or greater:

$$L = (W)(S) \quad L = 0.65(W)(S)$$

W = Width of offset in feet (meters).

S = Normal posted speed mph (km/h).

All dimensions are in inches (millimeters) unless otherwise shown.

DATE	REVISIONS
1-1-14	Revised workers sign number to agree with current MUTCD.
1-1-13	Omitted text 'WORKERS' sign.

OFF-RD OPERATIONS, 2L, 2W, 15' (4.5 m) TO 24" (600 mm) FROM PAVEMENT EDGE

STANDARD 701006-05

Illinois Department of Transportation

PASSED January 1, 2014
[Signature]
 ENGINEER OF SAFETY ENGINEERING

ISSUED 1-1-97

APPROVED January 1, 2014
[Signature]
 ENGINEER OF DESIGN AND ENVIRONMENT

benesch 1230 East Diehl Drive, Suite 109
 Naperville, Illinois 60563
 630-577-9100 Job No. 10333.11

FILE NAME =	USER NAME =	DESIGNED - JBL	REVISED -
\$FILEABBREVS		CHECKED - SJP	REVISED -
	PLOT SCALE =	DRAWN -	REVISED -
	PLOT DATE =	CHECKED -	REVISED -

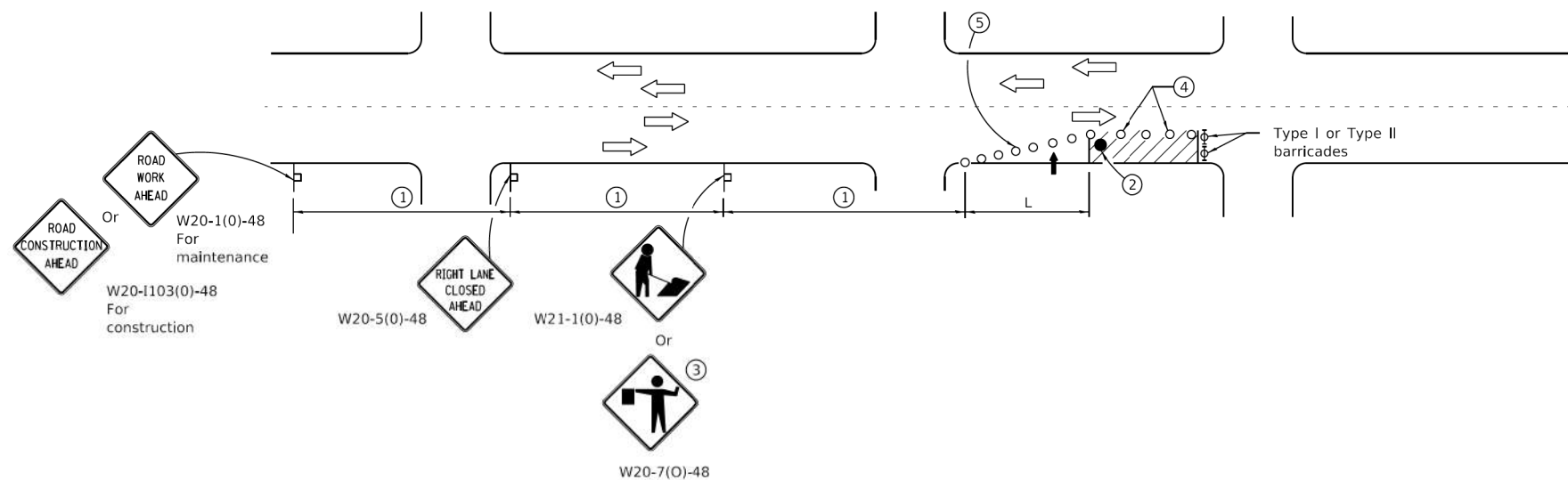
CITY OF ST. CHARLES, ILLINOIS

MAINTENANCE OF TRAFFIC
 IDOT STANDARD 701006

SHEET MOT-4 OF MOT-11

F.A.E. RTE.	SECTION	COUNTY	TOTAL SHEETS	SHEET NO.
1648		KANE	22	15
CONTRACT NO.				
ILLINOIS				

5/15/2023



SIGN SPACING	
Posted Speed	Sign Spacing
55	500' (150 m)
50-45	350' (100 m)
<45	200' (60 m)

SYMBOLS

- Arrow board
- Cone, drum or barricade
- Sign on portable or permanent support
- Work area
- Barricade or drum with flashing light
- Flagger with traffic control sign.

- ① Refer to SIGN SPACING TABLE for distances.
- ② Required for speeds > 40 mph.
- ③ Use flagger sign only when flagger is present.
- ④ Cones at 25' (8 m) centers for 250' (75 m). Additional cones may be placed at 50' (15 m) centers. When drums or Type I or Type II barricades are used, the interval between devices may be doubled.
- ⑤ Cones, drums or barricades at 20' (6 m) centers in taper.

GENERAL NOTES

This Standard is used where at any time, day or night, any vehicle, equipment, workers or their activities encroach on the pavement requiring the closure of one traffic lane in an Urban area.

Calculate L as follows:

SPEED LIMIT	FORMULAS	
	English	(Metric)
40 mph (70 km/h) or less:	$L = \frac{WS^2}{60}$	$L = \frac{WS^2}{150}$
45 mph (80 km/h) or greater:	$L=(W)(S)$	$L=0.65(W)(S)$

W = Width of offset in feet (meters).

S = Normal posted speed mph (km/h).

All dimensions are in inches (millimeters) unless otherwise shown.

Illinois Department of Transportation

PASSED January 1, 2015
 ISSUED 1-1-97
 ENGINEER OF SAFETY ENGINEERING

APPROVED January 1, 2015
 ENGINEER OF DESIGN AND ENVIRONMENT

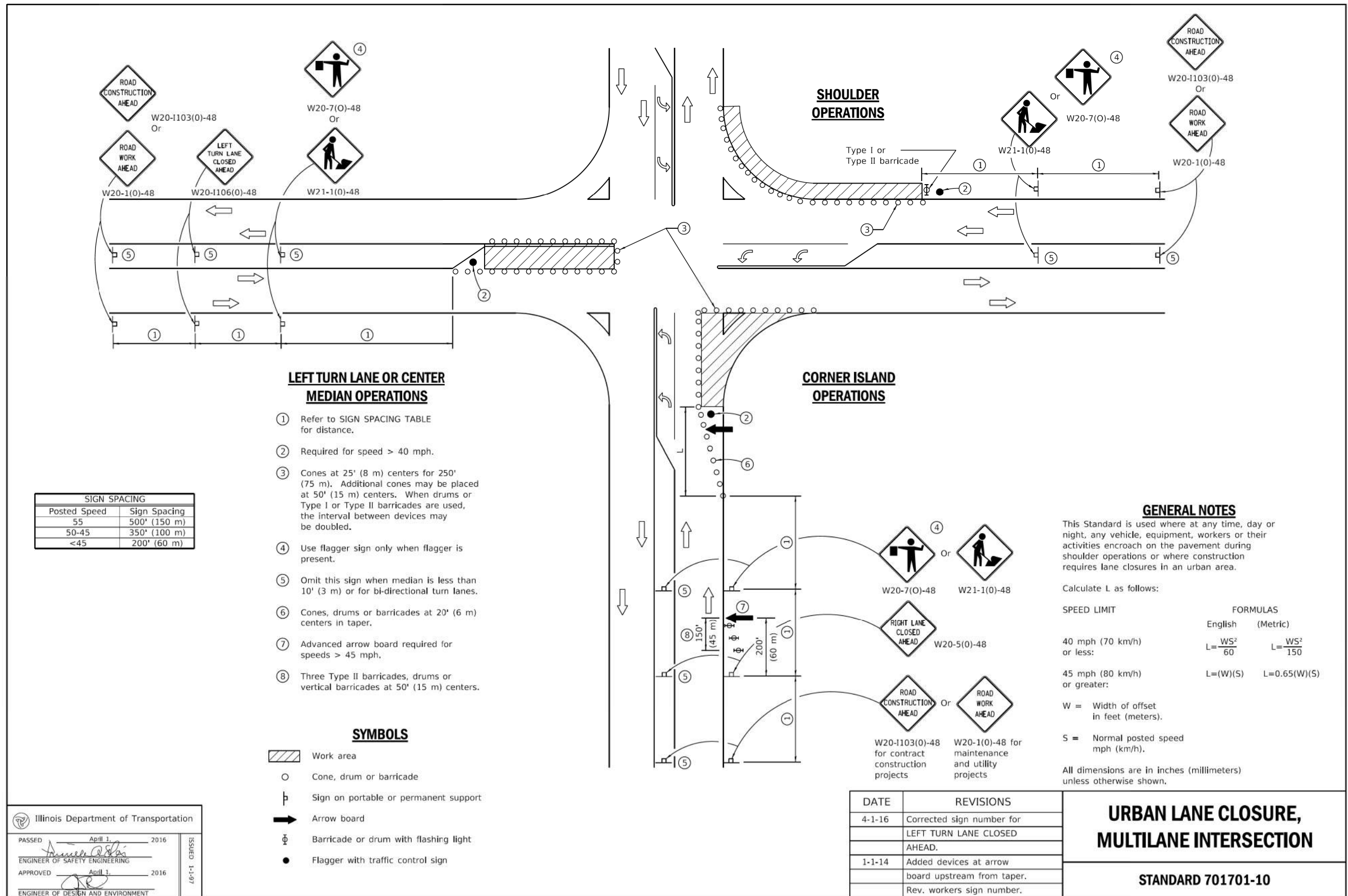
DATE	REVISIONS
1-1-15	Renamed standard. Moved case on Sheet 2 to new Highway Standard.
1-1-14	Revised workers sign number to agree with current MUTCD.

URBAN SINGLE LANE CLOSURE, MULTILANE, 2W WITH MOUNTABLE MEDIAN

STANDARD 701606-10

FILE NAME	USER NAME	DESIGNED	REVISIONS
		- JBL	-
\$FILEABBREVS		CHECKED - SJP	REVISED -
		DRAWN -	REVISED -
		CHECKED -	REVISED -

F.A.E. RTE.	SECTION	COUNTY	TOTAL SHEETS	SHEET NO.
1648		KANE	22	16
CONTRACT NO.				
ILLINOIS				



SIGN SPACING	
Posted Speed	Sign Spacing
55	500' (150 m)
50-45	350' (100 m)
<45	200' (60 m)

LEFT TURN LANE OR CENTER MEDIAN OPERATIONS

- ① Refer to SIGN SPACING TABLE for distance.
- ② Required for speed > 40 mph.
- ③ Cones at 25' (8 m) centers for 250' (75 m). Additional cones may be placed at 50' (15 m) centers. When drums or Type I or Type II barricades are used, the interval between devices may be doubled.
- ④ Use flagger sign only when flagger is present.
- ⑤ Omit this sign when median is less than 10' (3 m) or for bi-directional turn lanes.
- ⑥ Cones, drums or barricades at 20' (6 m) centers in taper.
- ⑦ Advanced arrow board required for speeds > 45 mph.
- ⑧ Three Type II barricades, drums or vertical barricades at 50' (15 m) centers.

SYMBOLS

- Work area
- Cone, drum or barricade
- Sign on portable or permanent support
- Arrow board
- Barricade or drum with flashing light
- Flagger with traffic control sign

SHOULDER OPERATIONS

CORNER ISLAND OPERATIONS

GENERAL NOTES

This Standard is used where at any time, day or night, any vehicle, equipment, workers or their activities encroach on the pavement during shoulder operations or where construction requires lane closures in an urban area.

Calculate L as follows:

SPEED LIMIT	FORMULAS	
	English	(Metric)
40 mph (70 km/h) or less:	$L = \frac{WS^2}{60}$	$L = \frac{WS^2}{150}$
45 mph (80 km/h) or greater:	$L = (W)(S)$	$L = 0.65(W)(S)$

W = Width of offset in feet (meters).
 S = Normal posted speed mph (km/h).

All dimensions are in inches (millimeters) unless otherwise shown.

Illinois Department of Transportation

PASSED April 1, 2016
 ENGINEER OF SAFETY ENGINEERING

APPROVED April 1, 2016
 ENGINEER OF DESIGN AND ENVIRONMENT

ISSUED 1-1-97

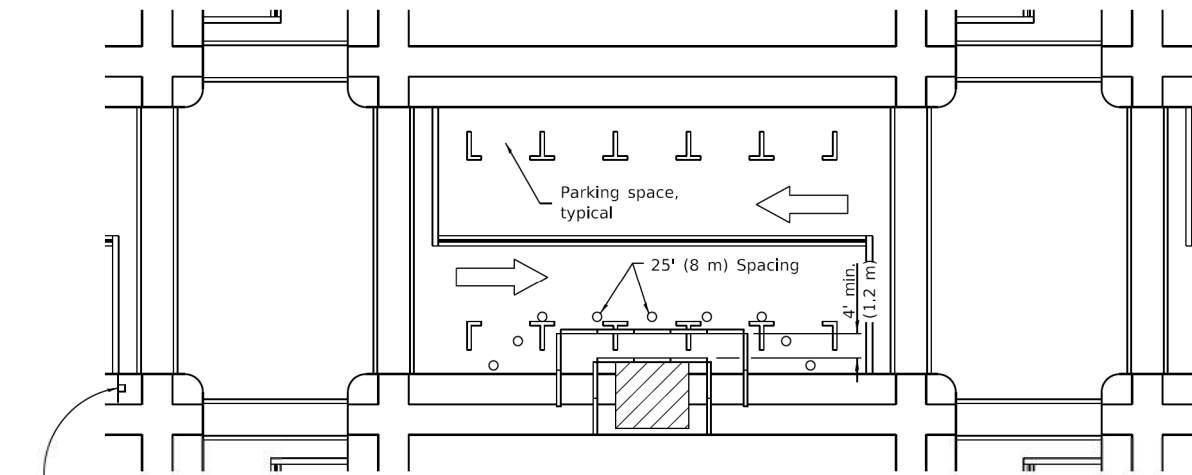
DATE	REVISIONS
4-1-16	Corrected sign number for LEFT TURN LANE CLOSED AHEAD.
1-1-14	Added devices at arrow board upstream from taper. Rev. workers sign number.

URBAN LANE CLOSURE, MULTILANE INTERSECTION

STANDARD 701701-10

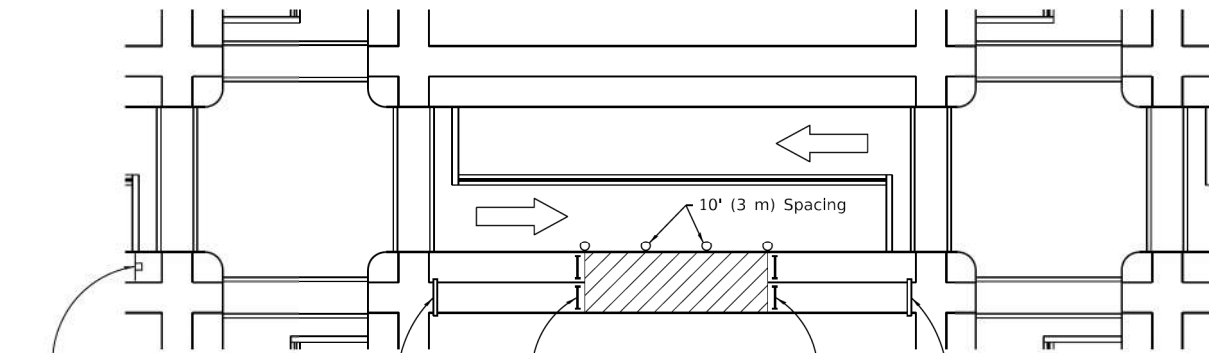
FILE NAME	USER NAME	DESIGNED	REVISIONS
		- JBL	-
		- SJP	-
		-	-
		-	-
		-	-

F.A.E. RTE.	SECTION	COUNTY	TOTAL SHEETS	SHEET NO.
1648		KANE	22	17
CONTRACT NO.				
ILLINOIS				



- ① ROAD CONSTRUCTION AHEAD W20-1103(0)-48 for contract construction projects
- Or
- ① ROAD WORK AHEAD W20-1(0)-48 for maintenance and utility projects

SIDEWALK DIVERSION



- ① ROAD CONSTRUCTION AHEAD W20-1103(0)-48 for contract construction projects
- Or
- ① ROAD WORK AHEAD W20-1(0)-48 for maintenance and utility projects

SIDEWALK CLOSED
R11-1101-2418

SIDEWALK CLOSED
R11-1102-2430

SIDEWALK CLOSURE

- SYMBOLS**
- Work area
 - Sign on portable or permanent support
 - Barricade or drum
 - Cone, drum or barricade
 - Type III barricade
 - Detectable pedestrian channelizing barricade

Illinois Department of Transportation

PASSED April 1, 2016
ENGINEER OF SAFETY ENGINEERING

APPROVED April 1, 2016
ENGINEER OF DESIGN AND ENVIRONMENT

ISSUED 1-1-97

① Omit whenever duplicated by road work traffic control.

GENERAL NOTES

This Standard is used where, at any time, pedestrian traffic must be rerouted due to work being performed.

This Standard must be used in conjunction with other Traffic Control & Protection Standards when roadway traffic is affected.

Temporary facilities shall be detectable and accessible.

The temporary pedestrian facilities shall be provided on the same side of the closed facilities whenever possible.

The SIDEWALK CLOSED / USE OTHER SIDE sign shall be placed at the nearest crosswalk or intersection to each end of the closure. Where the closure occurs at a corner, the signs shall be erected on the corners across the street from the closure. The SIDEWALK CLOSED signs shall be used at the ends of the actual closures.

Type III barricades and R11-2-4830 signs shall be positioned as shown in "ROAD CLOSED TO ALL TRAFFIC" detail on Standard 701901.

All dimensions are in inches (millimeters) unless otherwise shown.

DATE	REVISIONS
4-1-16	Omitted orange safety fence from standard as this is covered in the std. spec.
1-1-12	Added SIDEWALK DIVERSION. Modified appearance of plan views. Renamed Std.

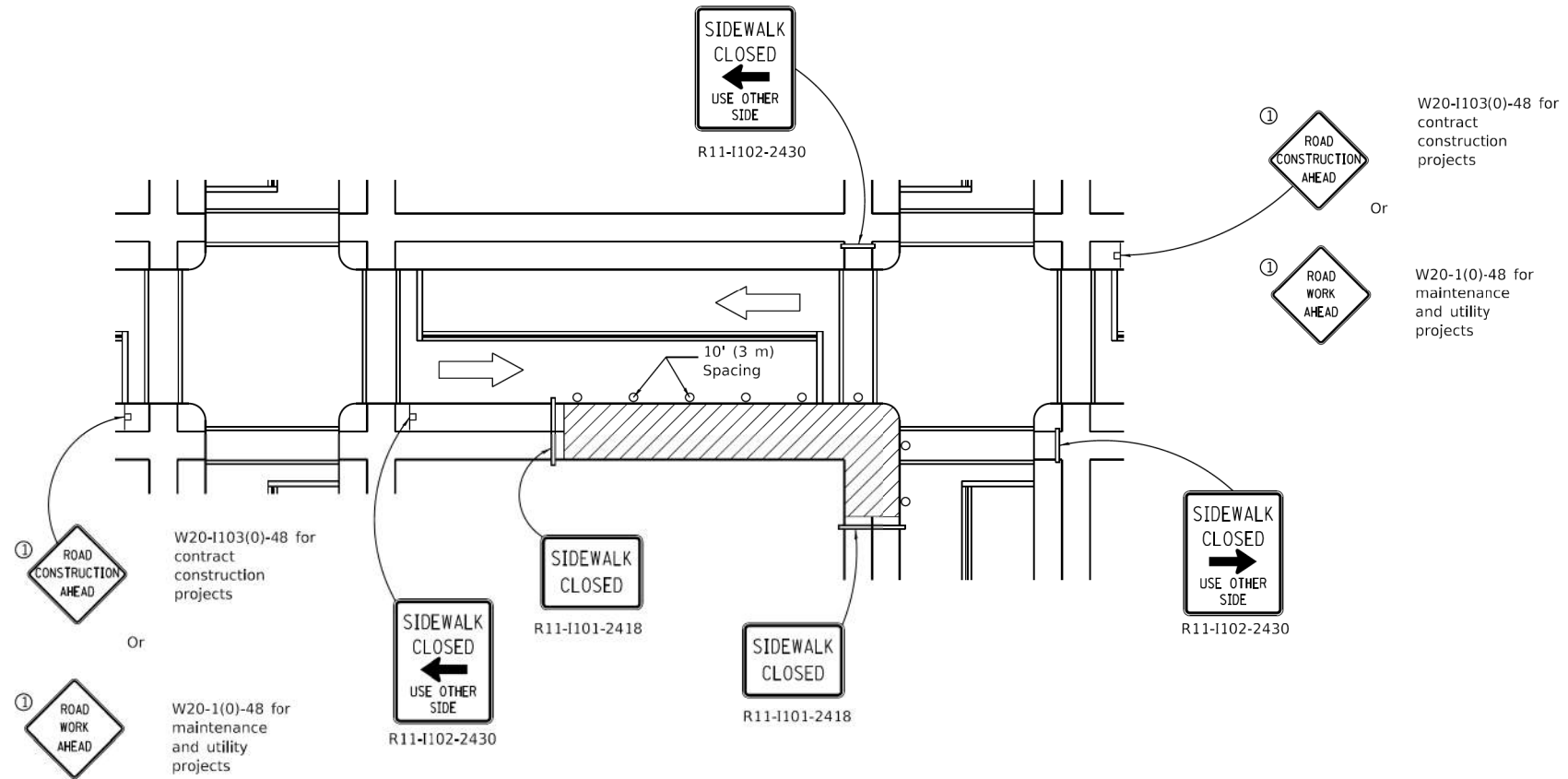
SIDEWALK, CORNER OR CROSSWALK CLOSURE

(Sheet 1 of 2)

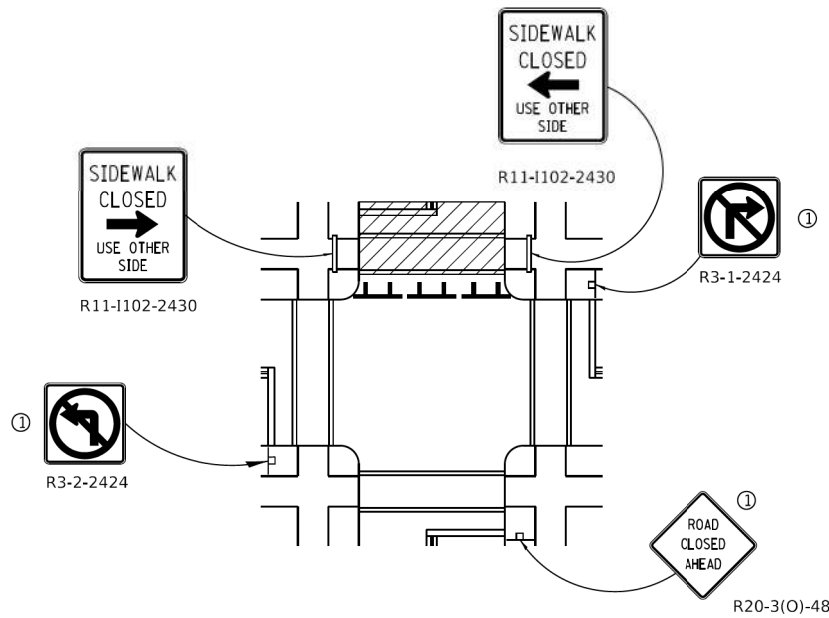
STANDARD 701801-06

FILE NAME =	USER NAME =	DESIGNED - JBL	REVISED -
\$FILEABBREVS		CHECKED - SJP	REVISED -
	PLOT SCALE =	DRAWN -	REVISED -
	PLOT DATE =	CHECKED -	REVISED -

F.A.E. RTE.	SECTION	COUNTY	TOTAL SHEETS	SHEET NO.
1648		KANE	22	18
CONTRACT NO.				
ILLINOIS				



CORNER CLOSURE



CROSSWALK CLOSURE

SIDEWALK, CORNER OR CROSSWALK CLOSURE

(Sheet 2 of 2)

STANDARD 701801-06

Illinois Department of Transportation

PASSED April 1, 2016
 ENGINEER OF SAFETY ENGINEERING

APPROVED April 1, 2016
 ENGINEER OF DESIGN AND ENVIRONMENT

ISSUED 1-1-97

benesch 1230 East Diehl Drive, Suite 109
 Naperville, Illinois 60563
 630-577-9100 Job No. 10333.11

FILE NAME =	USER NAME =	DESIGNED - JBL	REVISED -
\$FILEABBREVS		CHECKED - SJP	REVISED -
	PLOT SCALE =	DRAWN -	REVISED -
	PLOT DATE =	CHECKED -	REVISED -

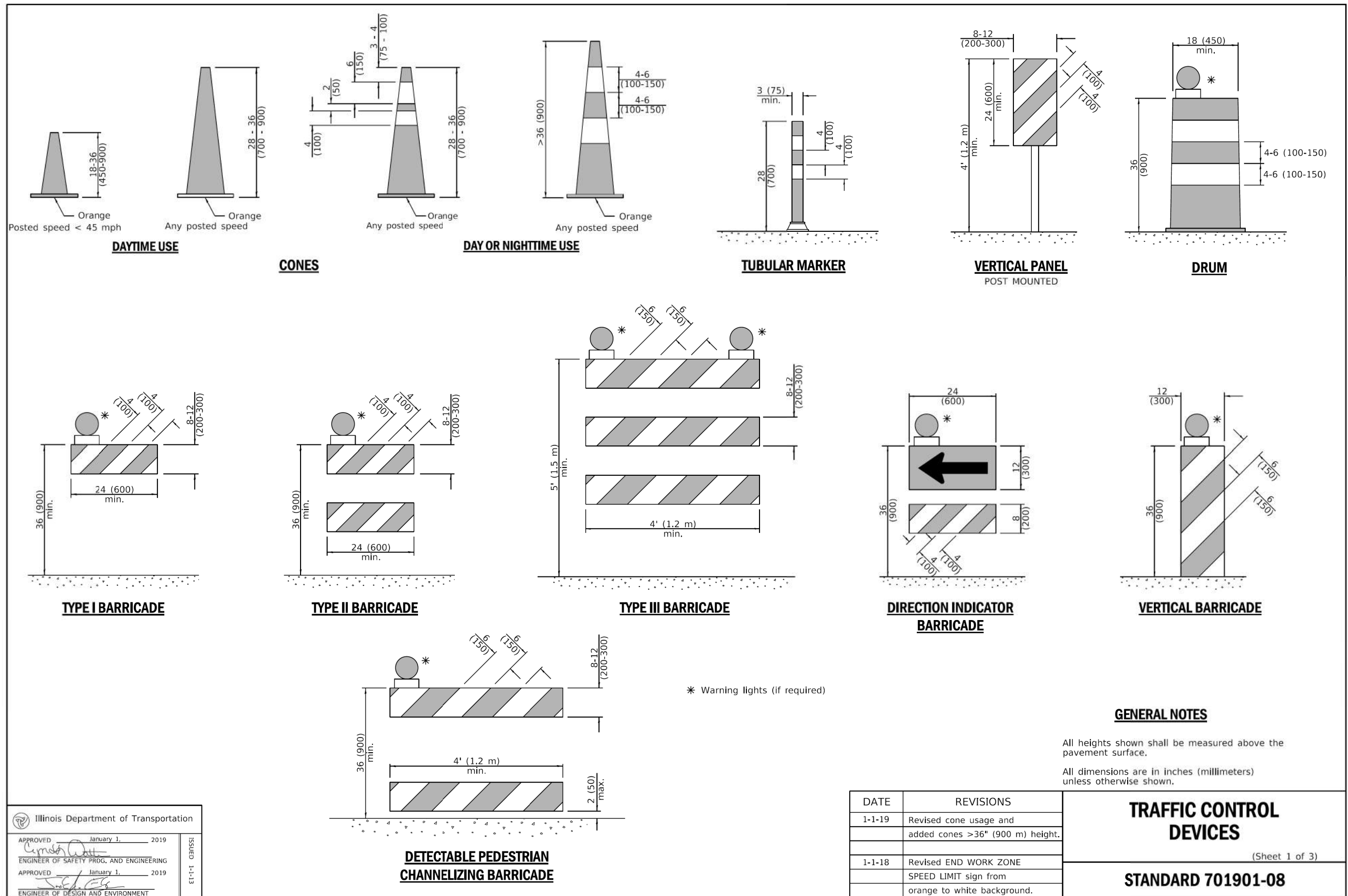
CITY OF ST. CHARLES, ILLINOIS

MAINTENANCE OF TRAFFIC
 IDOT STANDARD 701801 (2 OF 2)

SHEET MOT-8 OF MOT-11

F.A.E. RTE.	SECTION	COUNTY	TOTAL SHEETS	SHEET NO.
1648		KANE	22	19
CONTRACT NO.				
ILLINOIS				

5/15/2023



GENERAL NOTES

All heights shown shall be measured above the pavement surface.
 All dimensions are in inches (millimeters) unless otherwise shown.

DATE	REVISIONS	TRAFFIC CONTROL DEVICES (Sheet 1 of 3)
1-1-19	Revised cone usage and added cones >36" (900 m) height.	
1-1-18	Revised END WORK ZONE SPEED LIMIT sign from orange to white background.	

STANDARD 701901-08

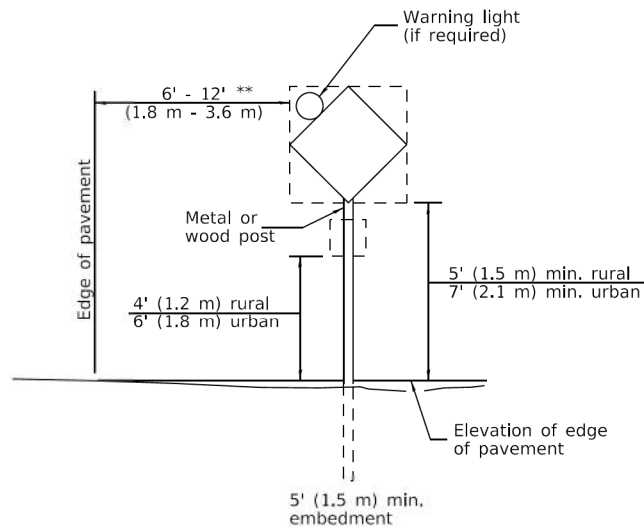
Illinois Department of Transportation

APPROVED January 1, 2019
 ENGINEER OF SAFETY PROG. AND ENGINEERING

APPROVED January 1, 2019
 ENGINEER OF DESIGN AND ENVIRONMENT

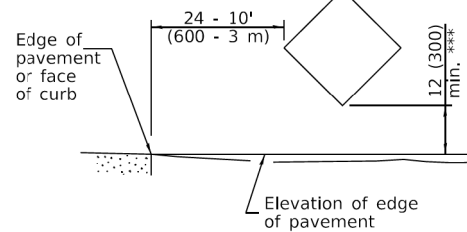
FILE NAME =	USER NAME =	DESIGNED - JBL	REVISED -
\$FILEABBREVS		CHECKED - SJP	REVISED -
	PLOT SCALE =	DRAWN -	REVISED -
	PLOT DATE =	CHECKED -	REVISED -

F.A.E. RTE.	SECTION	COUNTY	TOTAL SHEETS	SHEET NO.
1648		KANE	22	20
CONTRACT NO.				
ILLINOIS				



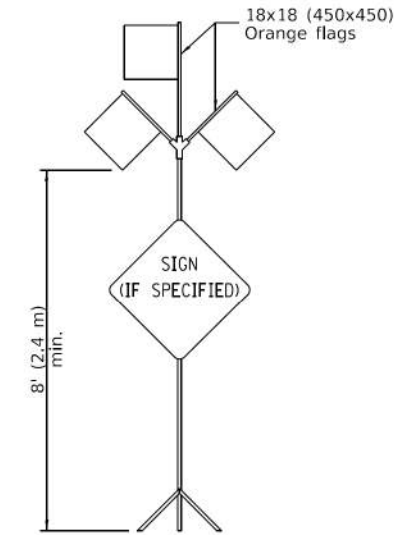
POST MOUNTED SIGNS

** When curb or paved shoulder are present this dimension shall be 24 (600) to the face of curb or 6' (1.8 m) to the outside edge of the paved shoulder.



SIGNS ON TEMPORARY SUPPORTS

*** When work operations exceed four days, this dimension shall be 5' (1.5 m) min. If located behind other devices, the height shall be sufficient to be seen completely above the devices.



HIGH LEVEL WARNING DEVICE

ROAD CONSTRUCTION NEXT X MILES

G20-1104(0)-6036

END CONSTRUCTION

G20-1105(0)-6024

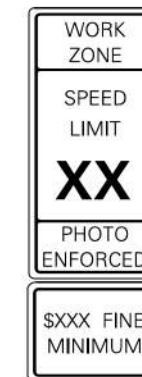
This signing is required for all projects 2 miles (3200 m) or more in length.

ROAD CONSTRUCTION NEXT X MILES sign shall be placed 500' (150 m) in advance of project limits.

END CONSTRUCTION sign shall be erected at the end of the job unless another job is within 2 miles (3200 m).

Dual sign displays shall be utilized on multi-lane highways.

WORK LIMIT SIGNING



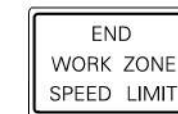
W21-III5(0)-3618

R2-1-3648

R10-1108p-3618 ****

R2-1106p-3618

Sign assembly as shown on Standards or as allowed by District Operations.

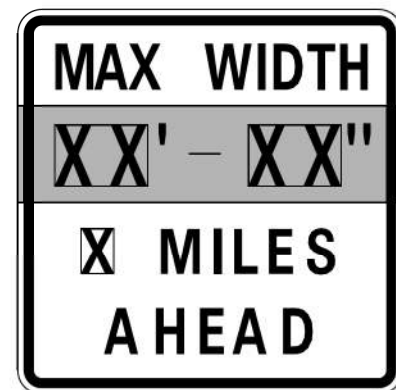


G20-1103-6036

This sign shall be used when the above sign assembly is used.

HIGHWAY CONSTRUCTION SPEED ZONE SIGNS

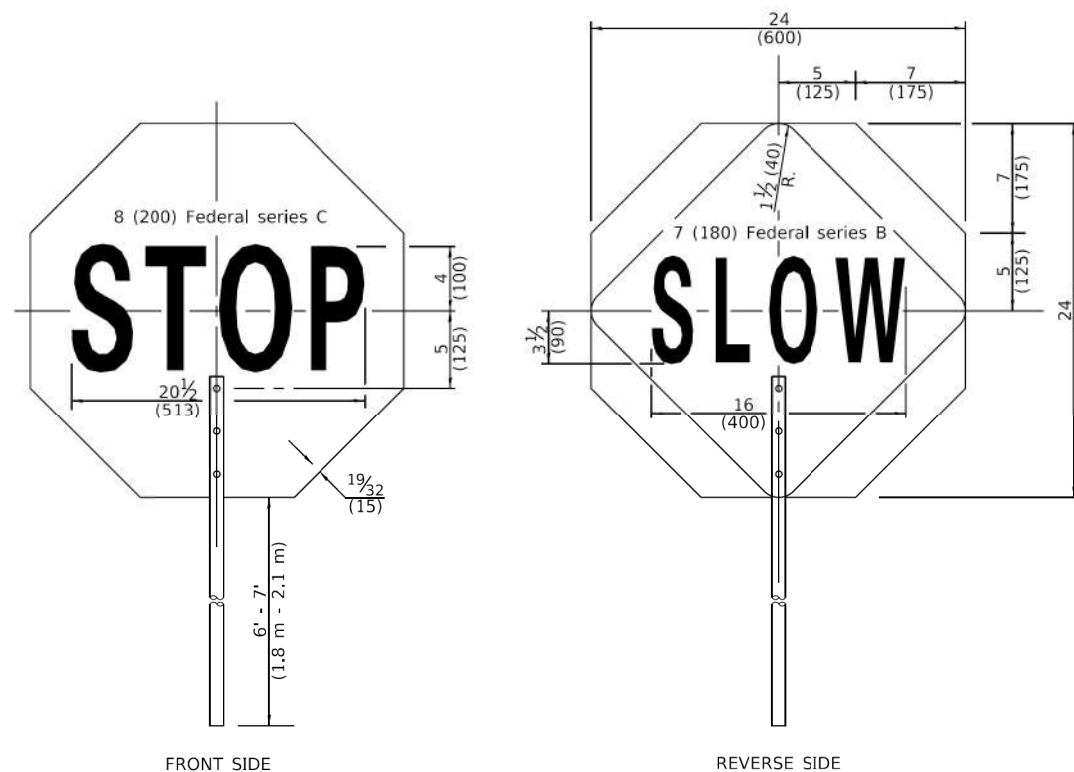
**** R10-1108p shall only be used along roadways under the jurisdiction of the State.



W12-1103-4848

WIDTH RESTRICTION SIGN

XX'-XX" width and X miles are variable.



FLAGGER TRAFFIC CONTROL SIGN

Illinois Department of Transportation

APPROVED January 1, 2019
[Signature]
 ENGINEER OF SAFETY PROG. AND ENGINEERING

APPROVED January 1, 2019
[Signature]
 ENGINEER OF DESIGN AND ENVIRONMENT

ET-1-1 GENESSE

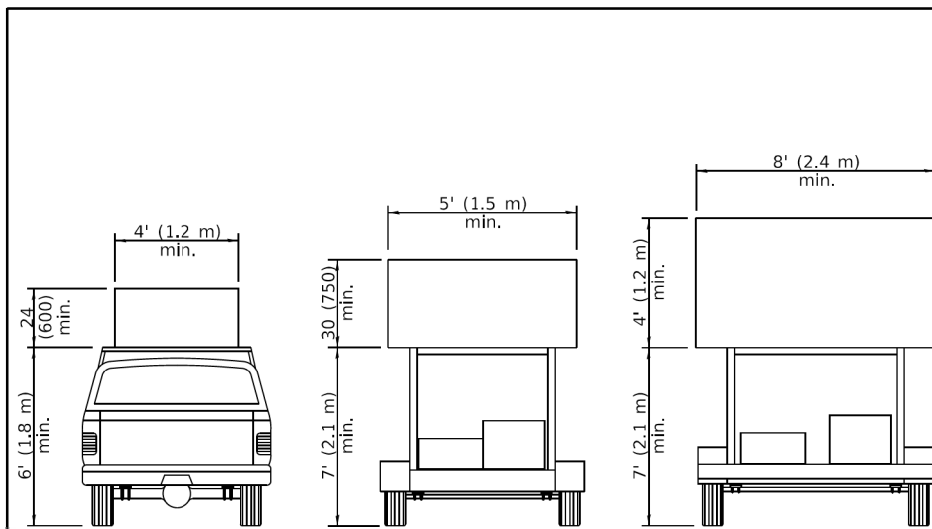
TRAFFIC CONTROL DEVICES

(Sheet 2 of 3)

STANDARD 701901-08

FILE NAME =	USER NAME =	DESIGNED - JBL	REVISED -
\$FILEABBREVS		CHECKED - SJP	REVISED -
	PLOT SCALE =	DRAWN -	REVISED -
	PLOT DATE =	CHECKED -	REVISED -

F.A.E. RTE.	SECTION	COUNTY	TOTAL SHEETS	SHEET NO.
1648		KANE	22	21
CONTRACT NO.				
ILLINOIS				

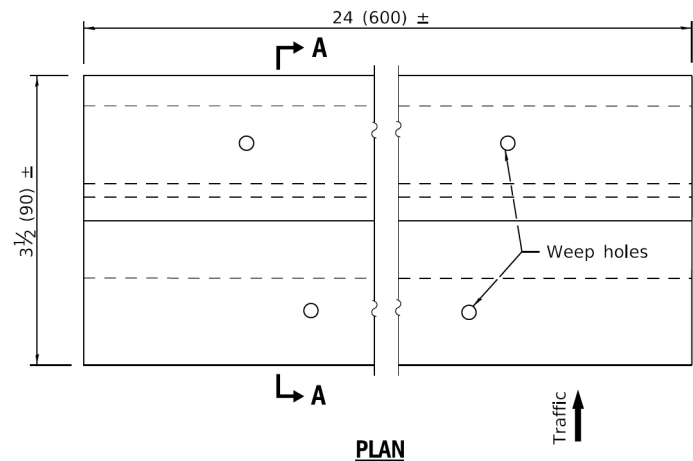


**TYPE A
ROOF
MOUNTED**

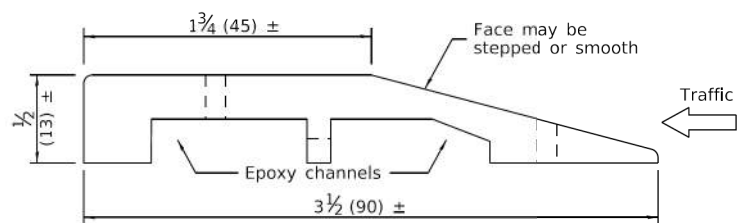
**TYPE B
ROOF OR TRAILER
MOUNTED**

**TYPE C
TRAILER
MOUNTED**

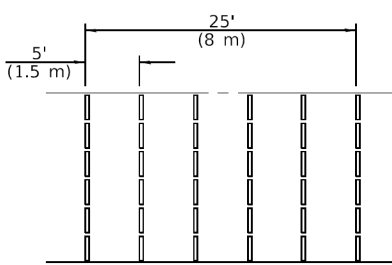
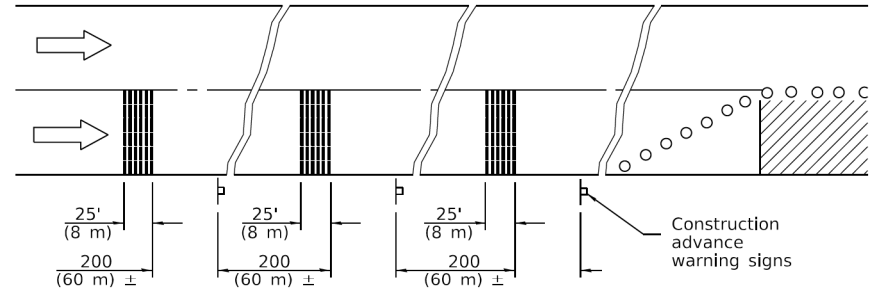
ARROW BOARDS



PLAN

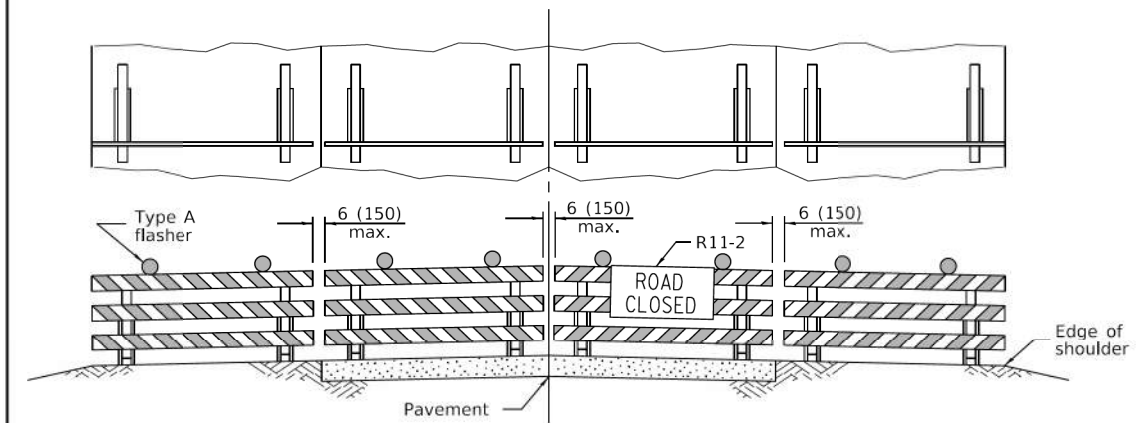


SECTION A-A



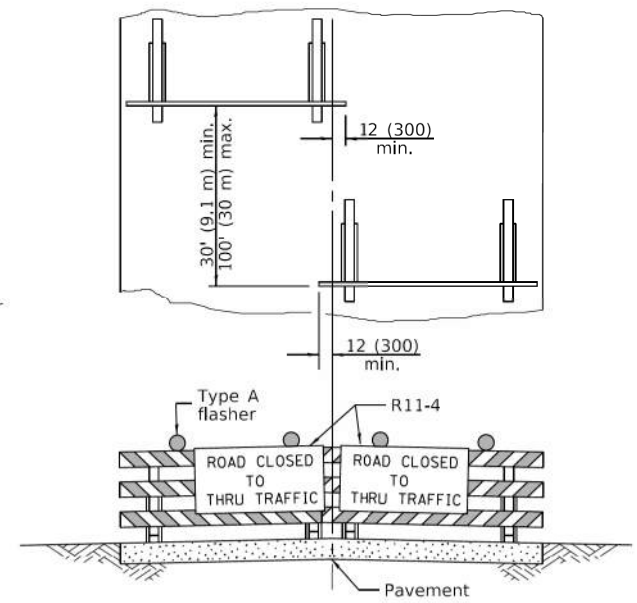
TYPICAL INSTALLATION

TEMPORARY RUMBLE STRIPS



ROAD CLOSED TO ALL TRAFFIC

ReflectORIZED striping may be omitted on the back side of the barricades. If a Type III barricade with an attached sign panel which meets NCHRP 350 is not available, the sign may be mounted on an NCHRP 350 temporary sign support directly in front of the barricade.



ROAD CLOSED TO THRU TRAFFIC

ReflectORIZED striping shall appear on both sides of the barricades. If a Type III barricade with an attached sign panel which meets NCHRP 350 is not available, the signs may be mounted on NCHRP 350 temporary sign supports directly in front of the barricade.

**TYPICAL APPLICATIONS OF
TYPE III BARRICADES CLOSING A ROAD**

**TRAFFIC CONTROL
DEVICES**

(Sheet 3 of 3)

STANDARD 701901-08

Illinois Department of Transportation

APPROVED January 1, 2019
[Signature]
 ENGINEER OF SAFETY PROG. AND ENGINEERING

APPROVED January 1, 2019
[Signature]
 ENGINEER OF DESIGN AND ENVIRONMENT

benesch 1230 East Diehl Drive, Suite 109
 Naperville, Illinois 60563
 630-577-9100 Job No. 10333.11

FILE NAME =	USER NAME =	DESIGNED - JBL	REVISED -
\$FILEABBREVS		CHECKED - SJP	REVISED -
	PLOT SCALE =	DRAWN -	REVISED -
	PLOT DATE =	CHECKED -	REVISED -

CITY OF ST. CHARLES, ILLINOIS

**MAINTENANCE OF TRAFFIC
IDOT STANDARD 701901 (3 OF 3)**

SHEET MOT-11 OF MOT-11

F.A.E. RTE.	SECTION	COUNTY	TOTAL SHEETS	SHEET NO.
1648		KANE	22	22
CONTRACT NO.				
ILLINOIS				

5/15/2023