

(Sanitary and Watermain)

**City of St. Charles
Kane and DuPage Counties**

ACCEPTANCE RESOLUTION

Subdivision Name: Prairie Centre – 2060 Lincoln Hwy

Whereas 2060 Lincoln LLC, the Developer of Prairie Centre – 2060 Lincoln Hwy – Mixed Use Building MUD1, constructed public sanitary sewer and watermain and appurtenances in easements as described in the attached exhibits in the aforesaid Subdivision; and

Whereas, the Developer has constructed public sanitary sewer and watermain and appurtenances in accord with the plans and specifications, heretofore approved by the City of St. Charles; and

Whereas, the constructed public sanitary sewer and watermain and appurtenances have been inspected by the Engineer for the sub divider and by a representative for the City of St. Charles and are found to be satisfactory;

Now, Therefore, Be It Resolved by the City Council of St. Charles, that said Council hereby approves and accepts the constructed public sanitary sewer and watermain and appurtenances. It being understood that this acceptance and/or approval in no way relieves the Developer of his Surety of any obligation for maintenance for a period of one (1) year as provided for in said Contract.

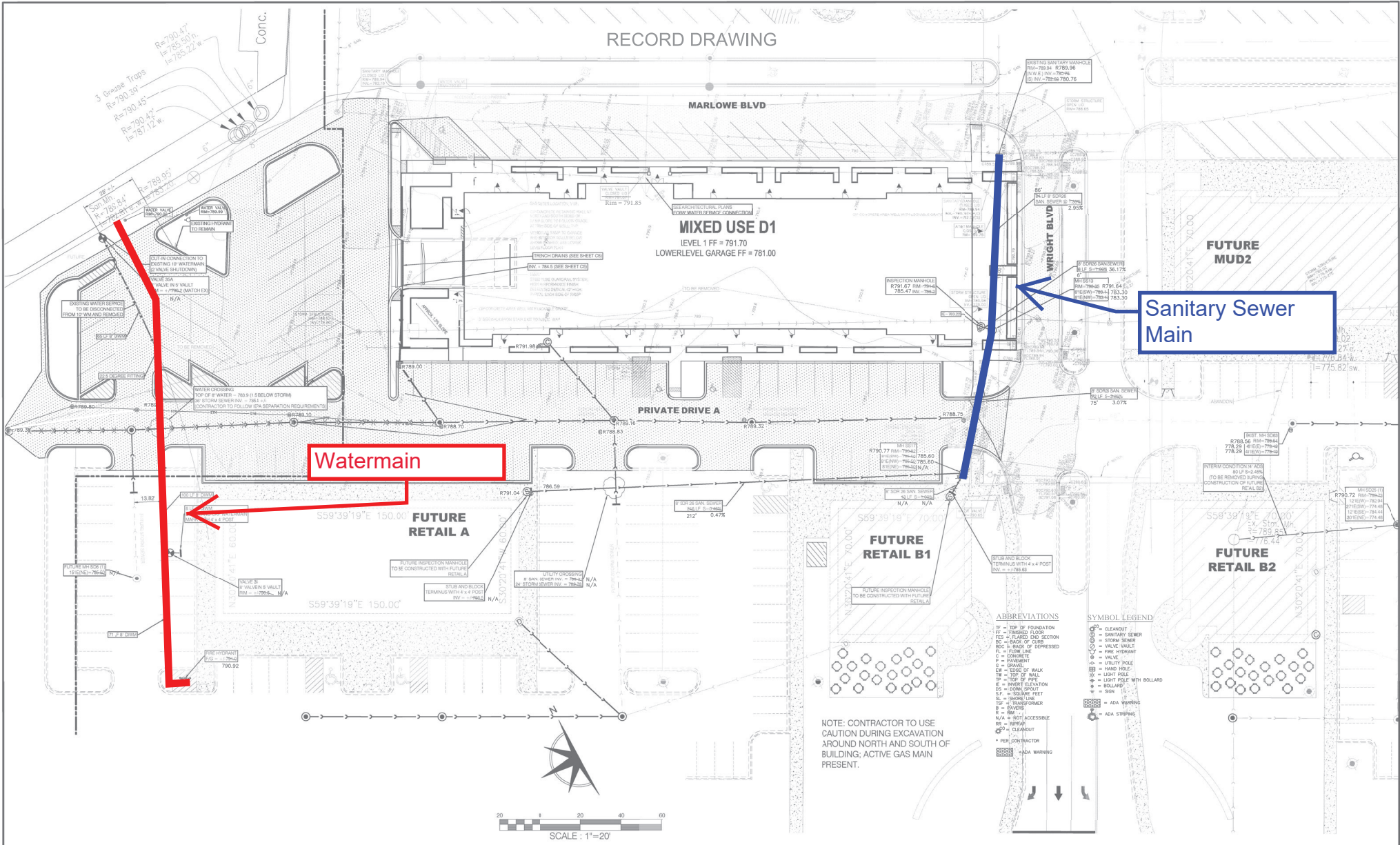
Passed by the City Council of the City of St. Charles, this ____ day of _____, 2024, and **APPROVED** by the Mayor of said City of St. Charles, this ___ day of _____, 2024.

MAYOR

ATTEST:

CITY CLERK

EXHIBIT A



Watermain

Sanitary Sewer Main

NOTE: CONTRACTOR TO USE CAUTION DURING EXCAVATION AROUND NORTH AND SOUTH OF BUILDING; ACTIVE GAS MAIN PRESENT.



PREPARED FOR:
SHODEEN, INC.
77 NORTH FIRST STREET
GENEVA, IL 60134

PREPARED BY:
ESM CIVIL SOLUTIONS, LLC
Civil Engineering - Land Entitlement - Project Feasibility
1315 Macon Drive - Suite 205 Naperville Illinois 60564
o. 630-300-0933 e. 630-624-0520

REVISIONS		
NO.	DATE	DESCRIPTION
1	05-25-22	FIELD CHANGE TO 8" RM WEST OF MIDJ AND SERVICE TO RETAIL "A"
2	06-7-22	ADDED EXISTING WATERMAIN SOUTH OF JEWEL
3	07-3-22	REVISED PER CITY EMAIL DATED 6-20-22

UTILITY PLAN				
PRAIRIE CENTRE - UNIT MUD1				
FILE NAME: GEOMETRIC	DSGN BY: ESM	JOB NO:	FLJ BK:	SHEET NO.
DISC NUM:	DRN BY: TWA	DATE: 12-07-2020	SCALE: 1"=20'	C6 of C12