



ST. CHARLES  
SINCE 1834

## AGENDA ITEM EXECUTIVE SUMMARY

Title: EAB Control Efforts – Information Only

Presenter:

*Please check appropriate box:*

<input checked="" type="checkbox"/>	Government Operations	X	Government Services 01.28.13
<input type="checkbox"/>	Planning & Development		City Council
<input type="checkbox"/>	Public Hearing		

Estimated Cost:		Budgeted:	YES		NO	
-----------------	--	-----------	-----	--	----	--

If NO, please explain how item will be funded:

### Executive Summary:

Monthly update on EAB activities for January 2013. This update provides detailed information about the EAB infestation including EAB confirmation status and ash trees proposed to be removed beginning in the month of February, 2013.

### Attachments: *(please list)*

Summary Sheet

### Recommendation / Suggested Action *(briefly explain):*

For information only.

*For office use only:*

*Agenda Item Number: 3.c*

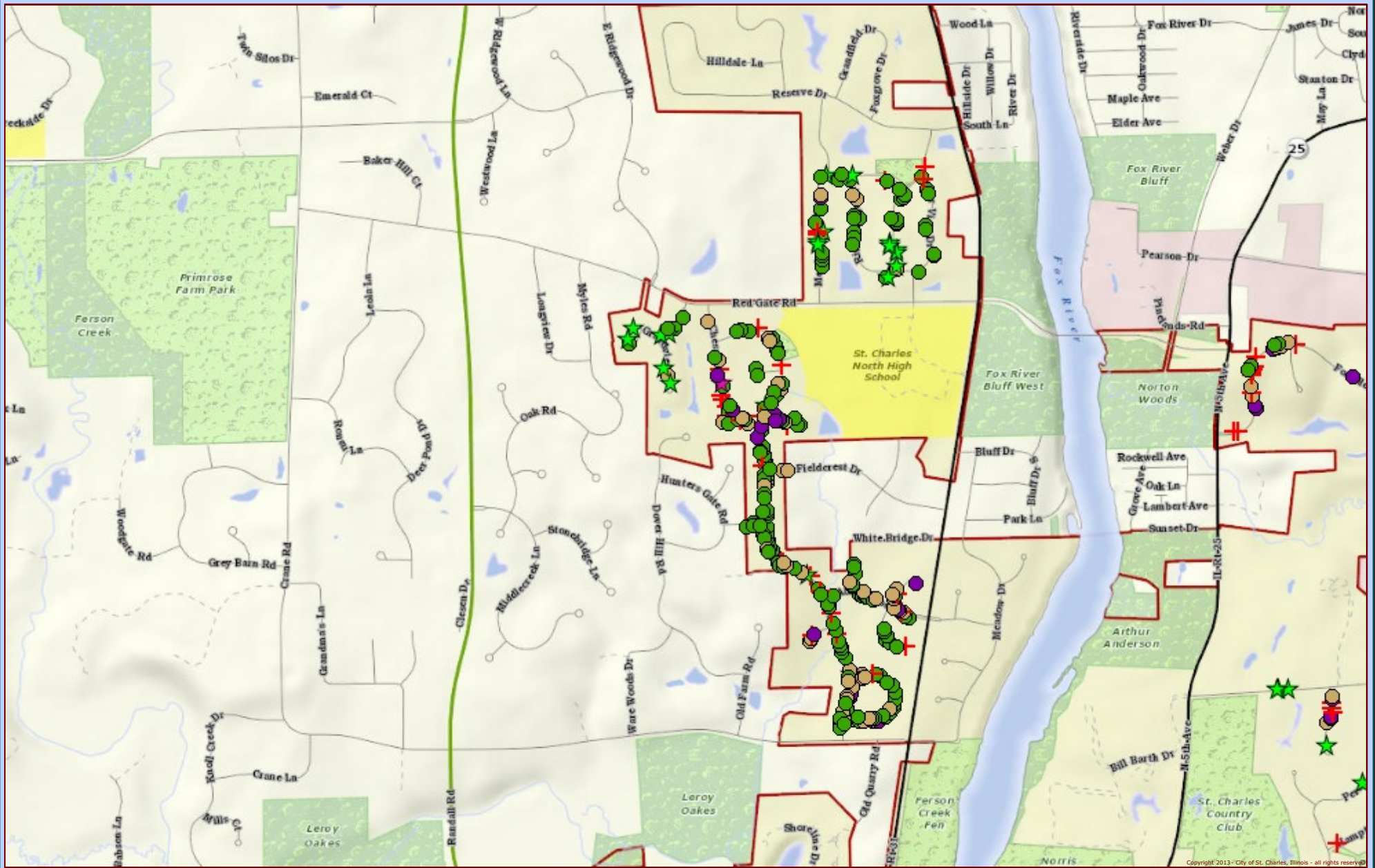


# City of St. Charles, Illinois

Two East Main Street St. Charles, IL 60174-1984  
Phone: 630-377-4400 Fax: 630-377-4440 - www.stcharlesil.gov

## EAB Proposed Removals NW Area 1

DONALD P. DEWITTE Mayor  
BRIAN TOWNSEND City Administrator



Copyright 2013 - City of St. Charles, Illinois - all rights reserved



Data Source:  
City of St. Charles, Illinois  
Kane County, Illinois  
DuPage County, Illinois  
Projection: Transverse Mercator  
Coordinate System: Illinois State Plane East  
North American Datum 1983  
Printed on: January 11, 2013 12:59 PM



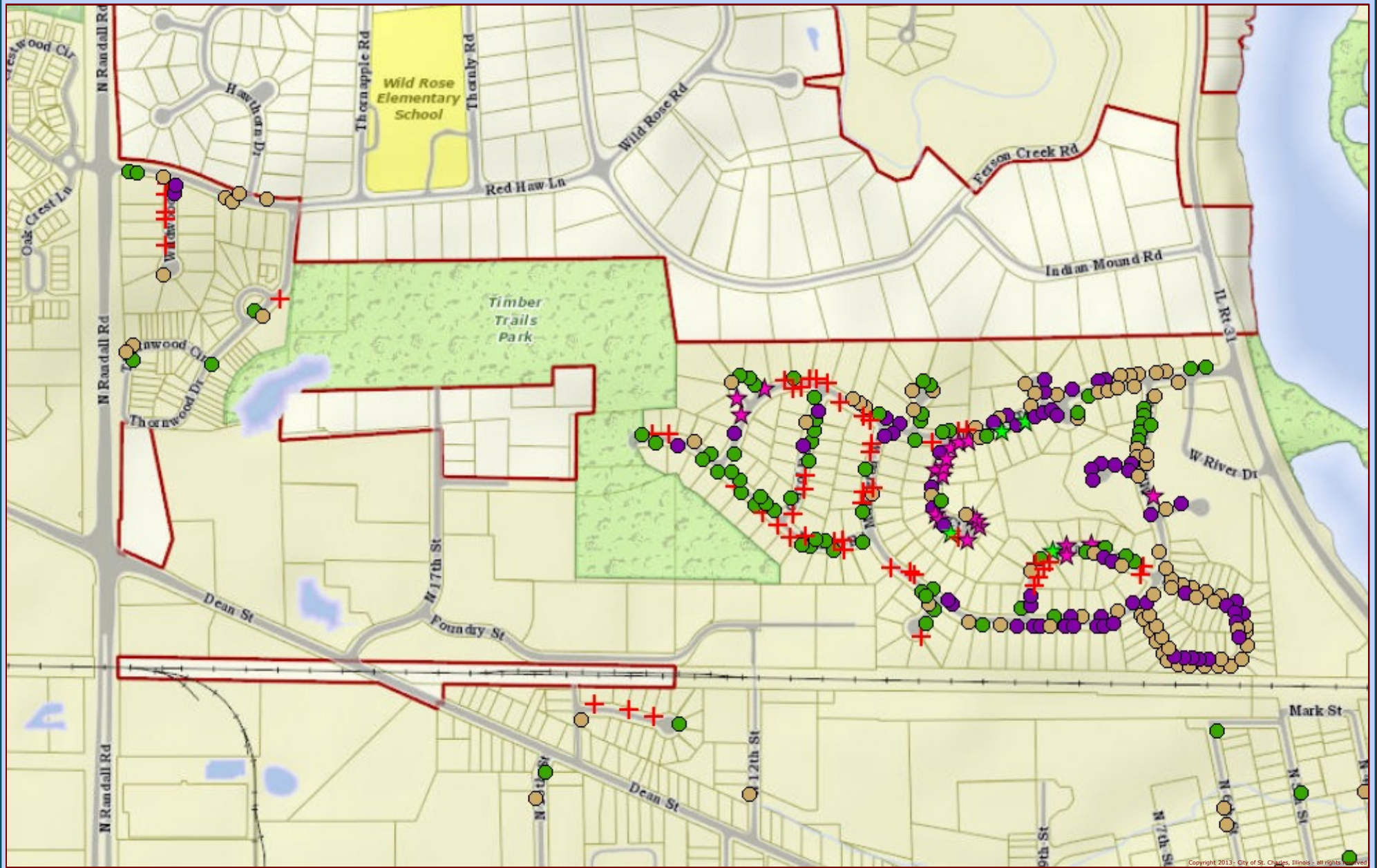
EAB Proposed Removals Upper NW Area 1

This work was created for planning purposes only and is provided as is, without warranty of any kind, either expressed or implied. The information represented may contain proprietary and confidential property of the City of St. Charles, Illinois. Under United States Copyright protection laws you may not use, reproduce, or distribute any part of this document without prior written permission. To obtain written permission please contact the City of St. Charles at Two East Main Street, St. Charles, IL 60174.  
Powered by InRoads GIS





# EAB Proposed Removals NW Area 2



Copyright 2013 - City of St. Charles, Illinois - all rights reserved



Data Source:  
City of St. Charles, Illinois  
Kane County, Illinois  
DuPage County, Illinois  
Projection: Transverse Mercator  
Coordinate System: Illinois State Plane East  
North American Datum 1983  
Printed on: January 11, 2013 01:02 PM



0 306 611 Feet

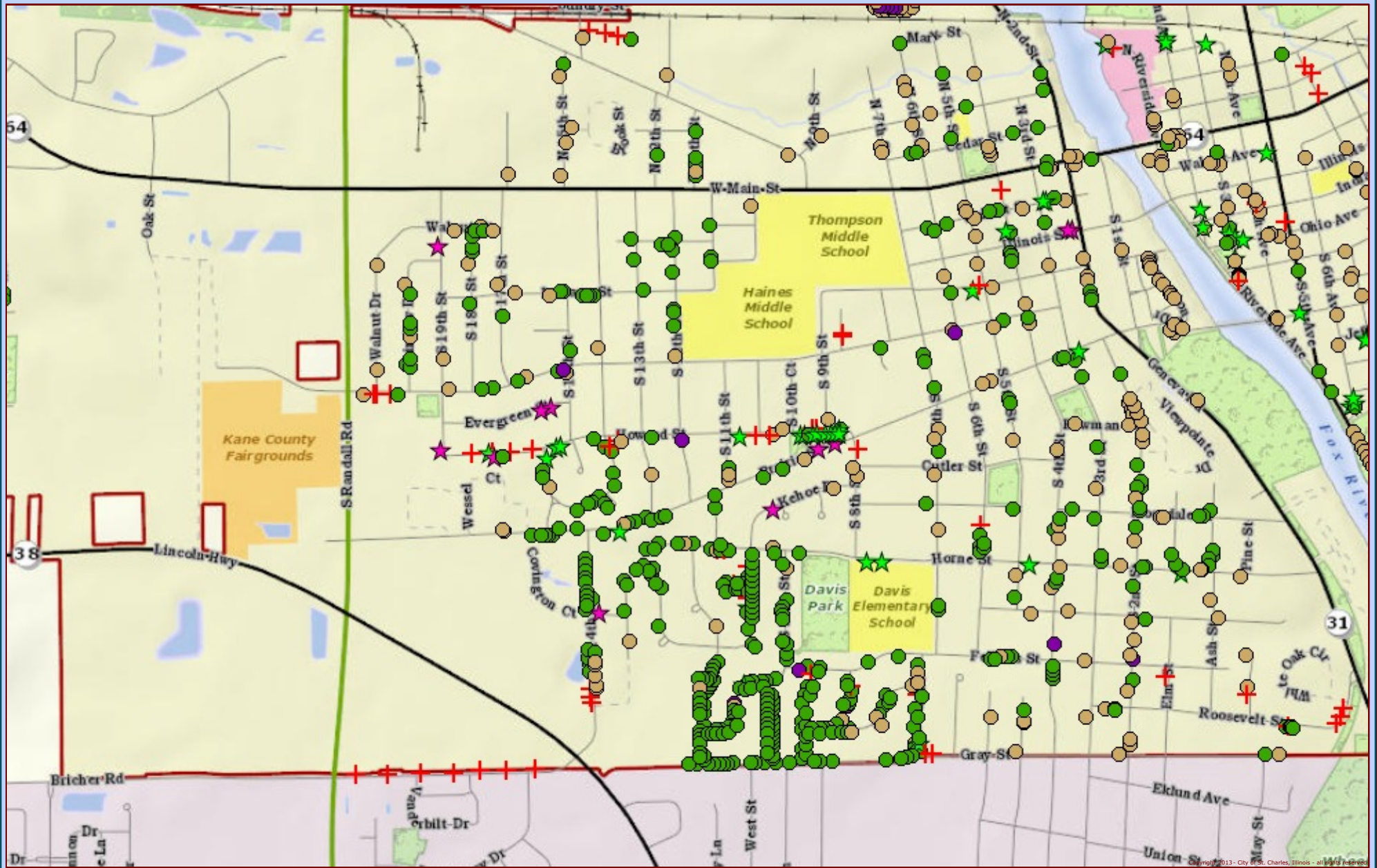
EAB Proposed Removals 01.28.13 Lower NW Area 2

This work was created for planning purposes only and is provided as is, without warranty of any kind, either expressed or implied. The information represented may contain proprietary and confidential property of the City of St. Charles, Illinois. Under United States Copyright protection laws you may not use, reproduce, or distribute any part of this document without prior written permission. To obtain written permission please contact the City of St. Charles at Two East Main Street, St. Charles, IL 60174  
Powered by Precision GIS





# EAB Proposed Removals SW Area 3



Data Source:  
 City of St. Charles, Illinois  
 Kane County, Illinois  
 DuPage County, Illinois  
 Projection: Transverse Mercator  
 Coordinate System: Illinois State Plane East  
 North American Datum 1983  
 Printed on: January 11, 2013 01:03 PM



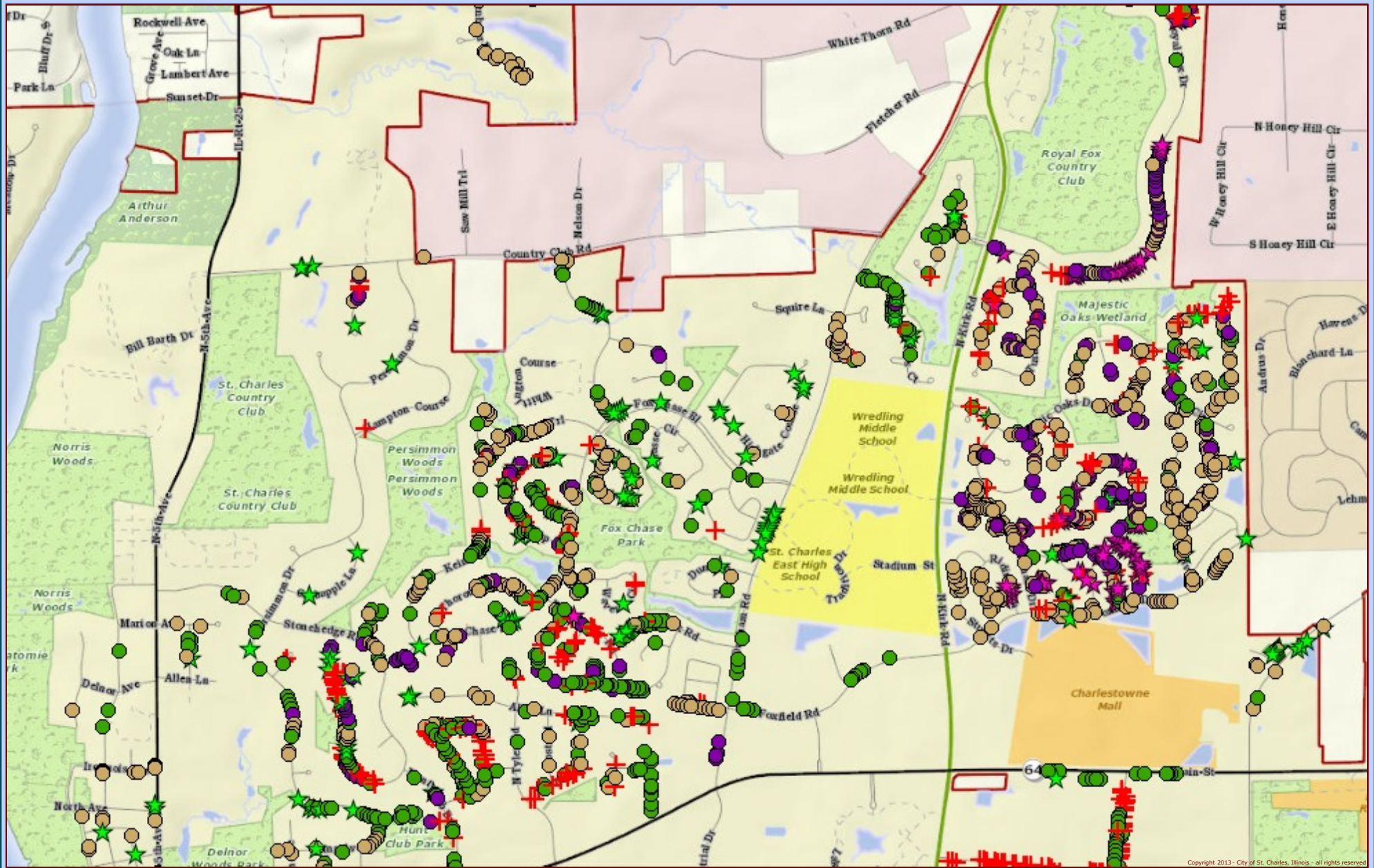
EAB Proposed Removals 01.28.13 Lower SW Area 3

This work was created for planning purposes only and is provided as is, without warranty of any kind, either expressed or implied. The information represented may contain proprietary and confidential property of the City of St. Charles, Illinois. Under United States Copyright protection laws you may not use, reproduce, or distribute any part of this document without prior written permission. To obtain written permission please contact the City of St. Charles at Two East Main Street, St. Charles, IL 60174.  
 Prepared by Precision GIS





# EAB Proposed Removals NE Area 4



Copyright 2013 - City of St. Charles, Illinois - all rights reserved



Data Source:  
 City of St. Charles, Illinois  
 Kane County, Illinois  
 DuPage County, Illinois  
 Projection: Transverse Mercator  
 Coordinate System: Illinois State Plane East  
 North American Datum 1983  
 Printed on: January 11, 2013 01:05 PM



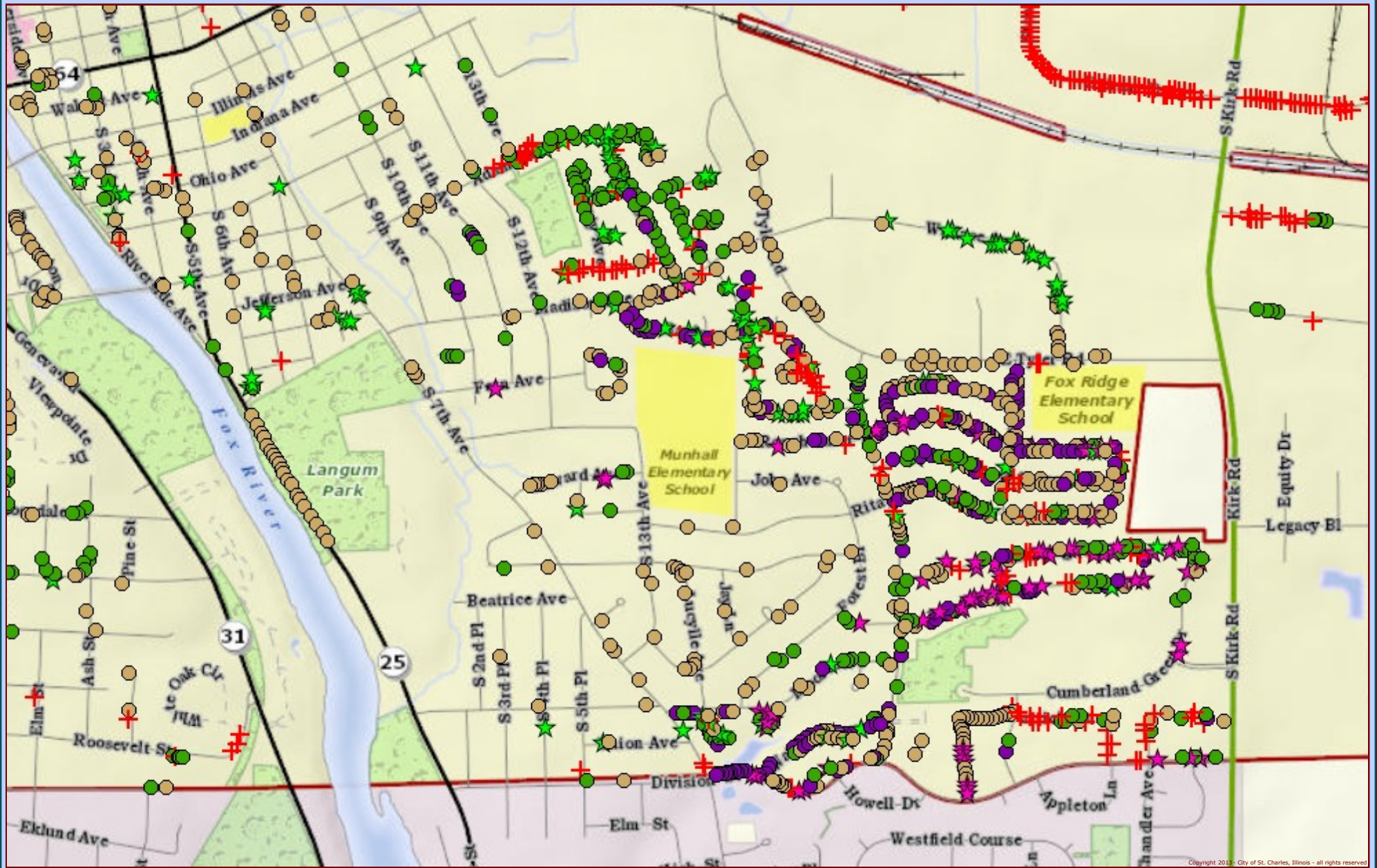
EAB Proposed Removals 01.28.13 Lower NE Area 4

This work was created for planning purposes only and is provided as is, without warranty of any kind, either expressed or implied. The information represented may contain proprietary and confidential property of the City of St. Charles, Illinois. Under United States Copyright protection laws you may not use, reproduce, or distribute any part of this document without prior written permission. To obtain written permission please contact the City of St. Charles at Two East Main Street, St. Charles, IL 60174  
 Prepared by Precision GIS





# EAB Proposed Removals SE Area 5



Copyright 2013 City of St. Charles, Illinois - all rights reserved



Data Source:  
City of St. Charles, Illinois  
Kane County, Illinois  
DuPage County, Illinois  
Projection: Transverse Mercator  
Coordinate System: Illinois State Plane East  
North American Datum 1983  
Printed on: January 11, 2013 01:07 PM



EAB Proposed Removals 01.28.13 Lower SE Area 5

This work was created for planning purposes only and is provided as is, without warranty of any kind, either expressed or implied. The information represented may contain proprietary and confidential property of the City of St. Charles, Illinois. Under United States Copyright protection laws you may not use, reproduce, or distribute any part of this document without prior written permission. To obtain written permission please contact the City of St. Charles at Two East Main Street, St. Charles, IL 60174.  
Powered by Precision GIS

Summary Report  
EAB Confirmed Sites January 28, 2013

Quadrant	Address	Suffix	Street	Side	Site	DBH	Condition	Maintenance	Species	
			<b>Total January EAB Confirmations:</b>					<b>0</b>		
			<b>Breakdown of Confirmations by Quadrant</b>				<b>NE:</b>	<b>0</b>		
							<b>SE:</b>	<b>0</b>		
							<b>NW:</b>	<b>0</b>		
							<b>SW:</b>	<b>0</b>		
							<b>FW:</b>	<b>0</b>		

Summary Report  
EAB Proposed Removals January 28, 2013

QUAD	Address	Suffix	Street	Side	Site	DBH	Condition	Maintenance	Species	Notes
NE	717		Arrowhead Ln	Front	1	17	EAB	Proposed Removal-NE	Fraxinus americana 'Rosehill White'	YR2 012813GSC
NE	718		Arrowhead Ln	Front	1	18	EAB	Proposed Removal-NE	Fraxinus americana 'Rosehill White'	YR2 012813GSC
NE	806		Arrowhead Ln	Front	1	14	EAB	Proposed Removal-NE	Fraxinus pennsylvanica 'Cimmaron'	YR2 012813GSC
NE	810		Arrowhead Ln	Front	1	15	EAB	Proposed Removal-NE	Fraxinus pennsylvanica 'Cimmaron'	YR2 012813GSC
NE	3102		Blackhawk Ct	Front	1	14	EAB	Proposed Removal-NE	Fraxinus americana 'Rosehill White'	YR2 012813GSC
NE	3104		Blackhawk Ct	Front	1	14	EAB	Proposed Removal-NE	Fraxinus pennsylvanica 'Cimmaron'	YR2 012813GSC
NE	3107		Blackhawk Ct	Front	1	15	EAB	Proposed Removal-NE	Fraxinus pennsylvanica 'Cimmaron'	YR2 012813GSC
NE	3108	X	Blackhawk Ct	Median	1	8	EAB	Proposed Removal-NE	Fraxinus pennsylvanica 'Cimmaron'	YR2 012813GSC
NE	3108	X	Blackhawk Ct	Median	2	8	EAB	Proposed Removal-NE	Fraxinus pennsylvanica 'Cimmaron'	YR2 012813GSC
NE	3108	X	Blackhawk Ct	Median	3	9	EAB	Proposed Removal-NE	Fraxinus pennsylvanica 'Cimmaron'	YR2 012813GSC
NE	3213		Blackhawk Tr	Front	2	12	EAB	Proposed Removal-NE	Fraxinus pennsylvanica 'Cimmaron'	YR2 012813GSC
NE	3401		Blackhawk Tr	Front	1	10	EAB	Proposed Removal-NE	Fraxinus pennsylvanica 'Cimmaron'	YR2 012813GSC
NE	3401		Blackhawk Tr	Front	2	11	EAB	Proposed Removal-NE	Fraxinus pennsylvanica 'Cimmaron'	YR2 012813GSC
NE	3405		Blackhawk Tr	Front	1	11	EAB	Proposed Removal-NE	Fraxinus pennsylvanica 'Cimmaron'	YR2 012813GSC
NE	3409		Blackhawk Tr	Front	1	12	EAB	Proposed Removal-NE	Fraxinus pennsylvanica 'Cimmaron'	YR2 012813GSC
NE	3410		Blackhawk Tr	Front	1	16	EAB	Proposed Removal-NE	Fraxinus pennsylvanica 'Cimmaron'	YR2 012813GSC
NE	3414		Blackhawk Tr	Front	1	14	EAB	Proposed Removal-NE	Fraxinus pennsylvanica 'Cimmaron'	YR2 012813GSC
NE	3417		Blackhawk Tr	Front	1	15	EAB	Proposed Removal-NE	Fraxinus pennsylvanica 'Cimmaron'	YR2 012813GSC
NE	3417		Blackhawk Tr	Front	2	14	EAB	Proposed Removal-NE	Fraxinus pennsylvanica 'Cimmaron'	YR2 012813GSC
NE	3002		Charlemagne Ln	Side	1	13	EAB	Proposed Removal-NE	Fraxinus americana 'Rosehill White'	YR2 012813GSC
NE	3101		Charlemagne Ln	Side	3	12	EAB	Proposed Removal-NE	Fraxinus pennsylvanica 'Cimmaron'	YR2 012813GSC
NE	3104	X	Charlemagne Ln	Median	3	10	EAB	Proposed Removal-NE	Fraxinus pennsylvanica 'Cimmaron'	YR2 012813GSC
NE	3122		Charlemagne Ln	Front	2	12	EAB	Proposed Removal-NE	Fraxinus pennsylvanica 'Cimmaron'	YR2 012813GSC
NE	3122		Charlemagne Ln	Front	3	12	EAB	Proposed Removal-NE	Fraxinus pennsylvanica 'Cimmaron'	YR2 012813GSC
NE	3125	X	Charlemagne Ln	Front	2	14	EAB	Proposed Removal-NE	Fraxinus pennsylvanica 'Cimmaron'	YR2 012813GSC
NE	3218		Charlemagne Ln	Front	4	14	EAB	Proposed Removal-NE	Fraxinus pennsylvanica 'Cimmaron'	YR2 012813GSC
NE	3218		Charlemagne Ln	Front	5	14	EAB	Proposed Removal-NE	Fraxinus pennsylvanica 'Cimmaron'	YR2 012813GSC
NE	3418		Charlemagne Ln	Front	1	13	EAB	Proposed Removal-NE	Fraxinus pennsylvanica 'Cimmaron'	YR2 012813GSC
NE	3501		Charlemagne Ln	Front	1	12	EAB	Proposed Removal-NE	Fraxinus pennsylvanica 'Cimmaron'	YR2 012813GSC
NE	1700		Huntington Rd	Front	1	12	EAB	Proposed Removal-NE	Fraxinus pennsylvanica 'Cimmaron'	YR2 012813GSC
NE	709		Indian Way	Front	1	12	EAB	Proposed Removal-NE	Fraxinus pennsylvanica 'Cimmaron'	YR2 012813GSC
NE	710		Indian Way	Front	1	15	EAB	Proposed Removal-NE	Fraxinus pennsylvanica 'Cimmaron'	YR2 012813GSC
NE	714		Indian Way	Front	1	14	EAB	Proposed Removal-NE	Fraxinus pennsylvanica 'Cimmaron'	YR2 012813GSC
NE	714		Indian Way	Front	2	10	EAB	Proposed Removal-NE	Fraxinus pennsylvanica 'Cimmaron'	YR2 012813GSC
NE	717		Indian Way	Front	3	16	EAB	Proposed Removal-NE	Fraxinus pennsylvanica 'Cimmaron'	YR2 012813GSC



Summary Report  
EAB Proposed Removals January 28, 2013

QUAD	Address	Suffix	Street	Side	Site	DBH	Condition	Maintenance	Species	Notes
NE	718	X	Indian Way	Front	1	15	EAB	Proposed Removal-NE	Fraxinus pennsylvanica 'Cimmaron'	YR2 012813GSC
NE	718	X	Indian Way	Front	4	15	EAB	Proposed Removal-NE	Fraxinus pennsylvanica 'Cimmaron'	YR2 012813GSC
NE	718	X	Indian Way	Front	6	14	EAB	Proposed Removal-NE	Fraxinus pennsylvanica 'Cimmaron'	YR2 012813GSC
NE	718	X	Indian Way	Front	7	12	EAB	Proposed Removal-NE	Fraxinus pennsylvanica 'Cimmaron'	YR2 012813GSC
NE	718	X	Indian Way	Front	8	13	EAB	Proposed Removal-NE	Fraxinus pennsylvanica 'Cimmaron'	YR2 012813GSC
NE	805		Indian Way	Front	1	15	EAB	Proposed Removal-NE	Fraxinus pennsylvanica 'Cimmaron'	YR2 012813GSC
NE	809		Indian Way	Front	1	16	EAB	Proposed Removal-NE	Fraxinus pennsylvanica 'Cimmaron'	YR2 012813GSC
NE	813		Indian Way	Front	1	8	EAB	Proposed Removal-NE	Fraxinus pennsylvanica 'Cimmaron'	YR2 012813GSC
NE	813		Indian Way	Front	2	8	EAB	Proposed Removal-NE	Fraxinus pennsylvanica 'Cimmaron'	YR2 012813GSC
NE	813		Indian Way	Front	3	13	EAB	Proposed Removal-NE	Fraxinus pennsylvanica 'Cimmaron'	YR2 012813GSC
NE	3301		Oxbow Ln	Front	2	9	EAB	Proposed Removal-NE	Fraxinus pennsylvanica 'Cimmaron'	YR2 012813GSC
NE	3301		Oxbow Ln	Side	2	8	EAB	Proposed Removal-NE	Fraxinus pennsylvanica 'Cimmaron'	YR2 012813GSC
NE	3407	X	Oxbow Ln	Front	6	10	EAB	Proposed Removal-NE	Fraxinus pennsylvanica 'Cimmaron'	YR2 012813GSC
NE	3407	X	Oxbow Ln	Front	7	8	EAB	Proposed Removal-NE	Fraxinus pennsylvanica 'Cimmaron'	YR2 012813GSC
NE	3407	X	Oxbow Ln	Front	8	12	EAB	Proposed Removal-NE	Fraxinus pennsylvanica 'Cimmaron'	YR2 012813GSC
NE	723		Ridings Ln	Side	1	7	EAB	Proposed Removal-NE	Fraxinus pennsylvanica 'Cimmaron'	YR2 012813GSC
NE	723		Ridings Ln	Side	2	7	EAB	Proposed Removal-NE	Fraxinus americana 'Autumn Purple'	YR2 012813GSC
NE	732		Ridings Ln	Front	1	8	EAB	Proposed Removal-NE	Fraxinus americana 'Rosehill White'	YR2 012813GSC
NE	744		Ridings Ln	Front	1	6	EAB	Proposed Removal-NE	Fraxinus americana 'Autumn Purple'	YR2 012813GSC
NE	807		Ridings Ln	Side	1	6	EAB	Proposed Removal-NE	Fraxinus americana 'Autumn Purple'	YR2 012813GSC
NE	807		Ridings Ln	Front	1	7	EAB	Proposed Removal-NE	Fraxinus americana 'Autumn Purple'	YR2 012813GSC
NE	816		Ridings Ln	Front	1	7	EAB	Proposed Removal-NE	Fraxinus americana 'Autumn Purple'	YR2 012813GSC
NE	827		Ridings Ln	Front	1	7	EAB	Proposed Removal-NE	Fraxinus americana 'Autumn Purple'	YR2 012813GSC
NE	2903		Royal Fox Dr	Front	1	13	EAB	Proposed Removal-NE	Fraxinus pennsylvanica 'Cimmaron'	YR2 012813GSC
NE	3203		Royal Fox Dr	Front	1	12	EAB	Proposed Removal-NE	Fraxinus pennsylvanica 'Cimmaron'	YR2 012813GSC
NE	3203		Royal Fox Dr	Front	2	15	EAB	Proposed Removal-NE	Fraxinus pennsylvanica 'Cimmaron'	YR2 012813GSC
NE	3203		Royal Fox Dr	Front	3	14	EAB	Proposed Removal-NE	Fraxinus pennsylvanica 'Cimmaron'	YR2 012813GSC
NE	3305		Royal Fox Dr	Front	1	10	EAB	Proposed Removal-NE	Fraxinus pennsylvanica 'Cimmaron'	YR2 012813GSC
NE	3305		Royal Fox Dr	Front	2	12	EAB	Proposed Removal-NE	Fraxinus pennsylvanica 'Cimmaron'	YR2 012813GSC
NE	3305		Royal Fox Dr	Front	3	10	EAB	Proposed Removal-NE	Fraxinus pennsylvanica 'Cimmaron'	YR2 012813GSC
NE	3401		Royal Fox Dr	Front	1	8	EAB	Proposed Removal-NE	Fraxinus pennsylvanica 'Cimmaron'	YR2 012813GSC
NE	3401		Royal Fox Dr	Front	2	10	EAB	Proposed Removal-NE	Fraxinus pennsylvanica 'Cimmaron'	YR2 012813GSC
NE	3401		Royal Fox Dr	Front	3	12	EAB	Proposed Removal-NE	Fraxinus pennsylvanica 'Cimmaron'	YR2 012813GSC
NE	3401		Royal Fox Dr	Front	4	10	EAB	Proposed Removal-NE	Fraxinus pennsylvanica 'Cimmaron'	YR2 012813GSC
NE	3403	X	Royal Fox Dr	Front	1	10	EAB	Proposed Removal-NE	Fraxinus pennsylvanica 'Cimmaron'	YR2 012813GSC

Summary Report  
EAB Proposed Removals January 28, 2013

QUAD	Address	Suffix	Street	Side	Site	DBH	Condition	Maintenance	Species	Notes
NE	3403	X	Royal Fox Dr	Front	2	8	EAB	Proposed Removal-NE	Fraxinus pennsylvanica 'Cimmaron'	YR2 012813GSC
NE	3403	X	Royal Fox Dr	Front	3	10	EAB	Proposed Removal-NE	Fraxinus pennsylvanica 'Cimmaron'	YR2 012813GSC
NE	3403	X	Royal Fox Dr	Front	4	6	EAB	Proposed Removal-NE	Fraxinus pennsylvanica 'Cimmaron'	YR2 012813GSC
NE	3503		Royal Fox Dr	Front	5	10	EAB	Proposed Removal-NE	Fraxinus pennsylvanica 'Cimmaron'	YR2 012813GSC
NE	3805		Royal Fox Dr	Front	1	13	EAB	Proposed Removal-NE	Fraxinus pennsylvanica 'Cimmaron'	YR2 012813GSC
NE	3805		Royal Fox Dr	Front	2	13	EAB	Proposed Removal-NE	Fraxinus pennsylvanica 'Cimmaron'	YR2 012813GSC
NE	3805		Royal Fox Dr	Front	3	11	EAB	Proposed Removal-NE	Fraxinus pennsylvanica 'Cimmaron'	YR2 012813GSC
NE	4105		Royal Fox Dr	Side	1	12	EAB	Proposed Removal-NE	Fraxinus pennsylvanica 'Cimmaron'	YR2 012813GSC
NE	4105		Royal Fox Dr	Side	2	13	EAB	Proposed Removal-NE	Fraxinus pennsylvanica 'Cimmaron'	YR2 012813GSC
NE	4105		Royal Fox Dr	Side	3	10	EAB	Proposed Removal-NE	Fraxinus pennsylvanica 'Cimmaron'	YR2 012813GSC
NE	2704		Royal Kings Ct	Side	2	12	EAB	Proposed Removal-NE	Fraxinus pennsylvanica 'Cimmaron'	YR2 012813GSC
NE	1413		Winners Cup Cir	Front	1	9	EAB	Proposed Removal-NE	Fraxinus pennsylvanica 'Cimmaron'	YR2 012813GSC
NW	202		Benham Ct	Side	2	11	EAB	Proposed Removal-NW	Fraxinus pennsylvanica 'Cimmaron'	YR2 012813GSC
NW	402		Bradley Cir	Front	1	13	EAB	Proposed Removal-NW	Fraxinus pennsylvanica 'Cimmaron'	YR2 012813GSC
NW	405		Bradley Cir	Front	1	15	EAB	Proposed Removal-NW	Fraxinus pennsylvanica 'Cimmaron'	YR2 012813GSC
NW	406		Bradley Cir	Front	2	20	EAB	Proposed Removal-NW	Fraxinus pennsylvanica 'Cimmaron'	YR2 012813GSC
NW	902		Carrol Ct	Side	1	17	EAB	Proposed Removal-NW	Fraxinus pennsylvanica 'Cimmaron'	YR2 012813GSC
NW	910		Carrol Ct	Front	1	11	EAB	Proposed Removal-NW	Fraxinus pennsylvanica 'Cimmaron'	YR2 012813GSC
NW	910		Carrol Ct	Side	1	16	EAB	Proposed Removal-NW	Fraxinus pennsylvanica 'Cimmaron'	YR2 012813GSC
NW	3602		Chesapeake Rd	Front	3	10	EAB	Proposed Removal-NW	Fraxinus pennsylvanica 'Cimmaron'	YR2 012813GSC
NW	2902		Greenwood Ln	Front	1	11	EAB	Proposed Removal-NW	Fraxinus americana 'Rosehill White'	YR2 012813GSC
NW	102		Lewis Ct	Front	2	18	EAB	Proposed Removal-NW	Fraxinus pennsylvanica Marshall Seedless	YR2 012813GSC
NW	102		Lewis Ct	Side	1	14	EAB	Proposed Removal-NW	Fraxinus pennsylvanica 'Cimmaron'	YR2 012813GSC
NW	102		Lewis Ct	Side	2	7	EAB	Proposed Removal-NW	Fraxinus pennsylvanica 'Summit'	YR2 012813GSC
NW	102		Lewis Ct	Front	1	15	EAB	Proposed Removal-NW	Fraxinus pennsylvanica 'Cimmaron'	YR2 012813GSC
NW	106		Lewis Ct	Front	2	17	EAB	Proposed Removal-NW	Fraxinus pennsylvanica 'Cimmaron'	YR2 012813GSC
NW	106		Lewis Ct	Front	3	12	EAB	Proposed Removal-NW	Fraxinus pennsylvanica 'Cimmaron'	YR2 012813GSC
NW	107		Lewis Ct	Front	1	18	EAB	Proposed Removal-NW	Fraxinus pennsylvanica 'Cimmaron'	YR2 012813GSC
NW	118		Lewis Ct	Front	1	20	EAB	Proposed Removal-NW	Fraxinus pennsylvanica 'Cimmaron'	YR2 012813GSC
NW	118		Lewis Ct	Front	2	19	EAB	Proposed Removal-NW	Fraxinus pennsylvanica 'Cimmaron'	YR2 012813GSC
NW	119		Lewis Ct	Front	1	17	EAB	Proposed Removal-NW	Fraxinus pennsylvanica 'Cimmaron'	YR2 012813GSC
NW	119		Lewis Ct	Front	2	19	EAB	Proposed Removal-NW	Fraxinus pennsylvanica 'Cimmaron'	YR2 012813GSC
NW	122		Lewis Ct	Front	1	20	EAB	Proposed Removal-NW	Fraxinus pennsylvanica 'Cimmaron'	YR2 012813GSC
NW	130		Lewis Ct	Front	1	18	EAB	Proposed Removal-NW	Fraxinus pennsylvanica 'Cimmaron'	YR2 012813GSC
SE	1703		Cambridge Dr	Front	2	13	EAB	Proposed Removal-SE	Fraxinus pennsylvanica 'Cimmaron'	YR2 012813GSC



Summary Report  
EAB Proposed Removals January 28, 2013

QUAD	Address	Suffix	Street	Side	Site	DBH	Condition	Maintenance	Species	Notes
SE	1710		Cambridge Dr	Side	2	10	EAB	Proposed Removal-SE	Fraxinus pennsylvanica 'Cimmaron'	YR2 012813GSC
SE	1714		Cambridge Dr	Front	2	12	EAB	Proposed Removal-SE	Fraxinus pennsylvanica 'Cimmaron'	YR2 012813GSC
SE	1715		Cambridge Dr	Front	2	13	EAB	Proposed Removal-SE	Fraxinus pennsylvanica 'Cimmaron'	YR2 012813GSC
SE	1719		Cambridge Dr	Front	2	14	EAB	Proposed Removal-SE	Fraxinus pennsylvanica 'Cimmaron'	YR2 012813GSC
SE	1719		Cambridge Dr	Side	2	13	EAB	Proposed Removal-SE	Fraxinus pennsylvanica 'Cimmaron'	YR2 012813GSC
SE	1809		Cambridge Dr	Front	1	16	EAB	Proposed Removal-SE	Fraxinus pennsylvanica 'Cimmaron'	YR2 012813GSC
SE	1810		Cambridge Dr	Front	1	16	EAB	Proposed Removal-SE	Fraxinus pennsylvanica 'Cimmaron'	YR2 012813GSC
SE	1810		Cambridge Dr	Front	2	16	EAB	Proposed Removal-SE	Fraxinus pennsylvanica 'Cimmaron'	YR2 012813GSC
SE	1816		Cambridge Dr	Front	1	13	EAB	Proposed Removal-SE	Fraxinus pennsylvanica 'Cimmaron'	YR2 012813GSC
SE	1902		Cambridge Dr	Front	1	16	EAB	Proposed Removal-SE	Fraxinus pennsylvanica 'Cimmaron'	YR2 012813GSC
SE	1905		Cambridge Dr	Front	1	13	EAB	Proposed Removal-SE	Fraxinus pennsylvanica 'Cimmaron'	YR2 012813GSC
SE	1907		Cambridge Dr	Front	1	18	EAB	Proposed Removal-SE	Fraxinus pennsylvanica 'Cimmaron'	YR2 012813GSC
SE	1909		Cambridge Dr	Front	1	16	EAB	Proposed Removal-SE	Fraxinus pennsylvanica 'Cimmaron'	YR2 012813GSC
SE	1912		Cambridge Dr	Front	2	12	EAB	Proposed Removal-SE	Fraxinus pennsylvanica 'Cimmaron'	YR2 012813GSC
SE	2001		Cambridge Dr	Front	2	14	EAB	Proposed Removal-SE	Fraxinus pennsylvanica 'Cimmaron'	YR2 012813GSC
SE	2001		Cambridge Dr	Side	3	12	EAB	Proposed Removal-SE	Fraxinus pennsylvanica 'Cimmaron'	YR2 012813GSC
SE	2005		Cambridge Dr	Front	2	16	EAB	Proposed Removal-SE	Fraxinus pennsylvanica 'Cimmaron'	YR2 012813GSC
SE	2010		Cambridge Dr	Front	1	13	EAB	Proposed Removal-SE	Fraxinus pennsylvanica 'Cimmaron'	YR2 012813GSC
SE	1777		Cumberland Grn Dr	Front	1	11	EAB	Proposed Removal-SE	Fraxinus pennsylvanica 'Cimmaron'	YR2 012813GSC
SE	1779		Cumberland Grn Dr	Front	1	12	EAB	Proposed Removal-SE	Fraxinus pennsylvanica 'Cimmaron'	YR2 012813GSC
SE	1903		Cumberland Grn Dr	Front	2	16	EAB	Proposed Removal-SE	Fraxinus pennsylvanica 'Cimmaron'	YR2 012813GSC
SE	1904		Cumberland Grn Dr	Front	1	15	EAB	Proposed Removal-SE	Fraxinus pennsylvanica 'Cimmaron'	YR2 012813GSC
SE	158		Division Ct	Front	1	6	EAB	Proposed Removal-SE	Fraxinus pennsylvanica Marshall Seedless	YR2 012813GSC
SE	1430		Division Ct	Side	1	13	EAB	Proposed Removal-SE	Fraxinus pennsylvanica Marshall Seedless	YR2 012813GSC
SE	1430		Division Ct	Side	2	12	EAB	Proposed Removal-SE	Fraxinus pennsylvanica 'Cimmaron'	YR2 012813GSC
SE	1910		Division St	Front	1	10	EAB	Proposed Removal-SE	Fraxinus pennsylvanica 'Cimmaron'	YR2 012813GSC
SE	1940		Division St	Front	2	12	EAB	Proposed Removal-SE	Fraxinus pennsylvanica 'Cimmaron'	YR2 012813GSC
SE	1950		Division St	Front	1	16	EAB	Proposed Removal-SE	Fraxinus pennsylvanica 'Cimmaron'	YR2 012813GSC
SE	1229		Edward Ave	Front	1	20	EAB	Proposed Removal-SE	Fraxinus pennsylvanica 'Cimmaron'	YR2 012813GSC
SE	1229		Edward Ave	Front	2	16	EAB	Proposed Removal-SE	Fraxinus pennsylvanica 'Cimmaron'	YR2 012813GSC
SE	1013		Fern Ave	Front	1	16	EAB	Proposed Removal-SE	Fraxinus pennsylvanica 'Cimmaron'	YR2 012813GSC
SE	1608		Jeanette Ave	Front	2	6	EAB	Proposed Removal-SE	Fraxinus americana 'Windy City White'	YR2 012813GSC
SE	1704		Jeanette Ave	Front	2	13	EAB	Proposed Removal-SE	Fraxinus pennsylvanica 'Cimmaron'	YR2 012813GSC
SE	1708		Jeanette Ave	Front	2	13	EAB	Proposed Removal-SE	Fraxinus pennsylvanica 'Cimmaron'	YR2 012813GSC
SE	1715		Jeanette Ave	Front	1	14	EAB	Proposed Removal-SE	Fraxinus pennsylvanica 'Cimmaron'	YR2 012813GSC

Summary Report  
EAB Proposed Removals January 28, 2013

QUAD	Address	Suffix	Street	Side	Site	DBH	Condition	Maintenance	Species	Notes
SE	1715		Jeanette Ave	Front	2	16	EAB	Proposed Removal-SE	Fraxinus pennsylvanica 'Cimmaron'	YR2 012813GSC
SE	1716		Jeanette Ave	Front	1	13	EAB	Proposed Removal-SE	Fraxinus pennsylvanica 'Cimmaron'	YR2 012813GSC
SE	1716		Jeanette Ave	Front	2	14	EAB	Proposed Removal-SE	Fraxinus pennsylvanica 'Cimmaron'	YR2 012813GSC
SE	1718		Jeanette Ave	Front	1	14	EAB	Proposed Removal-SE	Fraxinus pennsylvanica 'Cimmaron'	YR2 012813GSC
SE	1722		Jeanette Ave	Side	1	15	EAB	Proposed Removal-SE	Fraxinus pennsylvanica 'Cimmaron'	YR2 012813GSC
SE	1722		Jeanette Ave	Front	2	16	EAB	Proposed Removal-SE	Fraxinus pennsylvanica 'Cimmaron'	YR2 012813GSC
SE	1801		Jeanette Ave	Front	1	15	EAB	Proposed Removal-SE	Fraxinus pennsylvanica 'Cimmaron'	YR2 012813GSC
SE	1801		Jeanette Ave	Front	2	18	EAB	Proposed Removal-SE	Fraxinus pennsylvanica 'Cimmaron'	YR2 012813GSC
SE	1804		Jeanette Ave	Front	1	12	EAB	Proposed Removal-SE	Fraxinus pennsylvanica 'Cimmaron'	YR2 012813GSC
SE	1808		Jeanette Ave	Front	2	8	EAB	Proposed Removal-SE	Fraxinus americana 'Windy City White'	YR2 012813GSC
SE	1912		Jeanette Ave	Front	1	18	EAB	Proposed Removal-SE	Fraxinus pennsylvanica 'Cimmaron'	YR2 012813GSC
SE	1914		Jeanette Ave	Front	4	17	EAB	Proposed Removal-SE	Fraxinus pennsylvanica 'Cimmaron'	YR2 012813GSC
SE	1915		Jeanette Ave	Front	1	14	EAB	Proposed Removal-SE	Fraxinus pennsylvanica 'Cimmaron'	YR2 012813GSC
SE	1915		Jeanette Ave	Front	2	10	EAB	Proposed Removal-SE	Fraxinus pennsylvanica 'Cimmaron'	YR2 012813GSC
SE	1505		Madison Ave	Front	1	10	EAB	Proposed Removal-SE	Fraxinus americana 'Royal Purple'	YR2 012813GSC
SE	1809		Moore Ct	Side	6	12	EAB	Proposed Removal-SE	Fraxinus americana 'Autumn Purple'	YR2 012813GSC
SE	1823		Moore Ct	Front	1	11	EAB	Proposed Removal-SE	Fraxinus americana 'Rosehill White'	YR2 012813GSC
SE	1839		Moore Ct	Front	1	8	EAB	Proposed Removal-SE	Fraxinus pennsylvanica 'Cimmaron'	YR2 012813GSC
SE	1840	X	Moore Ct	Median	1	12	EAB	Proposed Removal-SE	Fraxinus americana 'Rosehill White'	YR2 012813GSC
SE	1840	X	Moore Ct	Median	2	12	EAB	Proposed Removal-SE	Fraxinus americana 'Rosehill White'	YR2 012813GSC
SE	1843		Moore Ct	Front	1	11	EAB	Proposed Removal-SE	Fraxinus pennsylvanica 'Cimmaron'	YR2 012813GSC
SE	1501		Patricia Ln	Front	1	12	EAB	Proposed Removal-SE	Fraxinus pennsylvanica 'Cimmaron'	YR2 012813GSC
SE	1501		Patricia Ln	Front	2	11	EAB	Proposed Removal-SE	Fraxinus pennsylvanica 'Cimmaron'	YR2 012813GSC
SE	1501		Patricia Ln	Front	3	12	EAB	Proposed Removal-SE	Fraxinus pennsylvanica 'Cimmaron'	YR2 012813GSC
SE	1519		Patricia Ln	Front	1	12	EAB	Proposed Removal-SE	Fraxinus pennsylvanica 'Cimmaron'	YR2 012813GSC
SE	1525		Patricia Ln	Front	1	10	EAB	Proposed Removal-SE	Fraxinus pennsylvanica 'Cimmaron'	YR2 012813GSC
SE	1525		Patricia Ln	Front	2	10	EAB	Proposed Removal-SE	Fraxinus pennsylvanica 'Cimmaron'	YR2 012813GSC
SE	1531		Patricia Ln	Front	1	10	EAB	Proposed Removal-SE	Fraxinus pennsylvanica 'Cimmaron'	YR2 012813GSC
SE	1706		Rita Ave	Front	2	17	EAB	Proposed Removal-SE	Fraxinus pennsylvanica 'Cimmaron'	YR2 012813GSC
SE	1907		Rita Ave	Front	2	13	EAB	Proposed Removal-SE	Fraxinus pennsylvanica 'Cimmaron'	YR2 012813GSC
SE	1908		Rita Ave	Front	2	13	EAB	Proposed Removal-SE	Fraxinus pennsylvanica 'Cimmaron'	YR2 012813GSC
SE	1517		Ronzheimer Ave	Front	1	17	EAB	Proposed Removal-SE	Fraxinus pennsylvanica 'Cimmaron'	YR2 012813GSC
SE	1608		Ronzheimer Ave	Front	2	13	EAB	Proposed Removal-SE	Fraxinus pennsylvanica 'Cimmaron'	YR2 012813GSC
SE	1609		Ronzheimer Ave	Front	1	19	EAB	Proposed Removal-SE	Fraxinus pennsylvanica 'Cimmaron'	YR2 012813GSC
SE	1706		Ronzheimer Ave	Front	1	15	EAB	Proposed Removal-SE	Fraxinus pennsylvanica 'Cimmaron'	YR2 012813GSC



Summary Report  
EAB Proposed Removals January 28, 2013

QUAD	Address	Suffix	Street	Side	Site	DBH	Condition	Maintenance	Species	Notes
SE	1709		Ronzheimer Ave	Front	1	19	EAB	Proposed Removal-SE	Fraxinus pennsylvanica 'Cimmaron'	YR2 012813GSC
SE	1804		Ronzheimer Ave	Front	1	18	EAB	Proposed Removal-SE	Fraxinus pennsylvanica 'Cimmaron'	YR2 012813GSC
SE	1903		Ronzheimer Ave	Front	2	16	EAB	Proposed Removal-SE	Fraxinus pennsylvanica 'Cimmaron'	YR2 012813GSC
SE	1904		Ronzheimer Ave	Front	1	18	EAB	Proposed Removal-SE	Fraxinus pennsylvanica 'Cimmaron'	YR2 012813GSC
SE	1907		Ronzheimer Ave	Front	1	17	EAB	Proposed Removal-SE	Fraxinus pennsylvanica 'Cimmaron'	YR2 012813GSC
SE	1908		Ronzheimer Ave	Front	1	17	EAB	Proposed Removal-SE	Fraxinus pennsylvanica 'Cimmaron'	YR2 012813GSC
SE	1910		Ronzheimer Ave	Front	1	16	EAB	Proposed Removal-SE	Fraxinus pennsylvanica 'Cimmaron'	YR2 012813GSC
SW	111		19th St /S	Front	1	15	EAB	Proposed Removal-SW	Fraxinus pennsylvanica 'Cimmaron'	YR2 012813GSC
SW	413		19th St /S	Front	1	3	EAB	Proposed Removal-SW	Fraxinus americana 'Autumn Purple'	YR2 012813GSC
SW	1601		Evergreen St	Front	2	3	EAB	Proposed Removal-SW	Fraxinus americana 'Fall Festival'	YR2 012813GSC
SW	1607		Evergreen St	Front	1	3	EAB	Proposed Removal-SW	Fraxinus pennsylvanica 'Patmore'	YR2 012813GSC
SW	1719		Howard St	Front	1	2	EAB	Proposed Removal-SW	Fraxinus pennsylvanica 'Cimmaron'	YR2 012813GSC
SW	214		Illinois St	Front	1	3	EAB	Proposed Removal-SW	Fraxinus pennsylvanica 'Cimmaron'	YR2 012813GSC
SW	214		Illinois St	Front	2	3	EAB	Proposed Removal-SW	Fraxinus pennsylvanica 'Cimmaron'	YR2 012813GSC
SW	1015		Kehoe Dr.	Front	3	3	EAB	Proposed Removal-SW	Fraxinus americana 'Windy City White'	YR2 012813GSC
SW	800	X	Prairie St	Front	1	3	EAB	Proposed Removal-SW	Fraxinus pennsylvanica 'Cimmaron'	YR2 012813GSC
SW	800	X	Prairie St	Front	5	11	EAB	Proposed Removal-SW	Fraxinus pennsylvanica 'Cimmaron'	YR2 012813GSC
<b>Total January Proposed EAB Removals:</b>								<b>192</b>		
							<b>NE:</b>	<b>82</b>		
							<b>SE:</b>	<b>78</b>		
							<b>NW:</b>	<b>22</b>		
							<b>SW:</b>	<b>10</b>		
							<b>FW:</b>	<b>0</b>		